

Recombinant Cytokeratin, Multi (Epithelial Marker) Antibody

Rabbit Monoclonal Antibody [Clone KRT/1877R]

Catalog No	Format	Size
RBM37-1877-P0	Purified Ab with BSA and Azide at 200ug/ml	20 ug
RBM37-1877-P1	Purified Ab with BSA and Azide at 200ug/ml	100 ug
RBM37-1877-P1ABX	Purified Ab WITHOUT BSA and Azide at 1.0mg/ml	100 ug

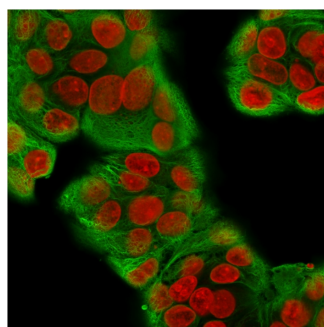
Applications	Tested Dillution	Note
Flow Cytometry (Flow)	1-2ug/million cells	
Immunofluorescence (IF)	1-3ug/ml	
Immunohistochemistry (IHC)	1-2ug/ml	30 min at RT. Staining of formalin-fixed tissues requires heating tissue sections in 10mM Tris with 1mM EDTA, pH 9.0, for 45 min at 95°C followed by cooling at RT for 20 minutes
Western Blot (WB)	2-4ug/ml	

Product Details

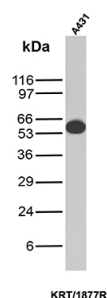
Clone	KRT/1877R
Immunogen	Keratin-enriched preparation from cultured human epithelial cells
Host	Rabbit
Clonality	Monoclonal
Isotype / Light Chain	IgG / Kappa
Mol. Weight of Antigen	Multiple
Species Reactivity	Cow, Frog, Goat, Guinea Pig, Human, Monkey, Mouse, Pig, Rat
Positive Control	A431 cells, Colon carcinoma., Skin

**Optimal dilution for a specific application should be determined.*

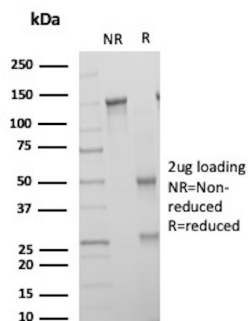
Product Images for Recombinant Cytokeratin, Multi (Epithelial Marker) Antibody



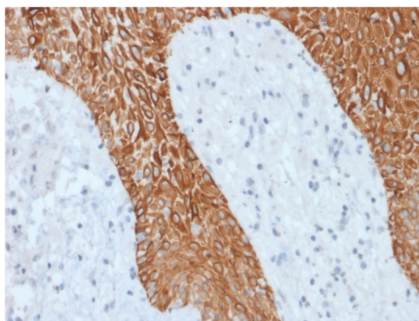
Immunofluorescence Analysis of MeOH-fixed Human MCF-7 cells labeling CK with Multi-Cytokeratin Recombinant Rabbit Monoclonal Antibody (KRT/1877R) followed by Goat anti-Mouse IgG-CF488 (Green). The nuclear counterstain is Reddot (Red).



Western Blot Analysis of A431 cell lysate using Cytokeratin Recombinant Rabbit Monoclonal Antibody (KRT/1877R).



SDS-PAGE Analysis of Purified Keratin, type II cytoskeletal 6A Recombinant Rabbit Monoclonal Antibody (KRT/1877R). Confirmation of Purity and Integrity of Antibody.



Formalin-fixed, paraffin-embedded human Skin stained with Multi-Cytokeratin Recombinant Rabbit Monoclonal Antibody (KRT/1877R).

Specificity & Comments

Twenty human keratins are resolved with two-dimensional gel electrophoresis into acidic (pI 6.0) subfamilies. This antibody recognizes acidic (Type I or LMW) and basic (Type II or HMW) cytokeratins, including 59kDa (CK4); 58kDa (CK5); 56kDa (CK6); 52kDa (CK8); 56.5kDa (CK10); 53kDa (CK13) and 45kDa (CK18). This is a broad-spectrum antibody, which has been reported to differentiate epithelial tumors from non-epithelial tumors. Many studies have shown the usefulness of keratins as markers in cancer research and tumor diagnosis.

Limitations and Warranty

This antibody is available for research use only and is not approved for use in diagnosis. There are no warranties, expressed or implied, which extend beyond this description. Company is not liable for any personal injury or economic loss resulting from this product.

Supplied As

200ug/ml of Ab Purified from Bioreactor Concentrate by Protein A/G. Prepared in 10mM PBS with 0.05% BSA & 0.05% azide. Also available WITHOUT BSA & azide at 1.0mg/ml.

Storage and Stability

Antibody with azide - store at 2 to 8°C. Antibody without azide - store at -20 to -80°C. Antibody is stable for 24 months. Non-hazardous. No MSDS required.