

## Recombinant Cytokeratin, Basic (Type II or HMW) Antibody

Rabbit Monoclonal Antibody [Clone KRTH/2147R]

Catalog No	Format	Size
RBM31-2147-P0	Purified Ab with BSA and Azide at 200ug/ml	20 ug
RBM31-2147-P1	Purified Ab with BSA and Azide at 200ug/ml	100 ug
RBM31-2147-P1ABX	Purified Ab WITHOUT BSA or Azide at 1.0mg/ml	100 ug

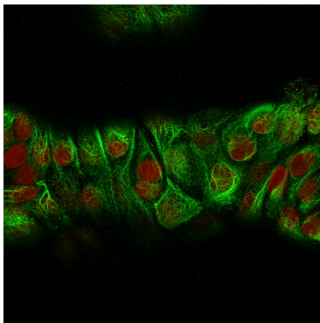
Applications	Tested Dillution	Note
Immunohistochemistry (IHC)	1-2ug/ml	30 min at RT. Staining of formalin-fixed tissues requires heating tissue sections in 10mM Tris with 1mM EDTA, pH 9.0, for 45 min at 95°C followed by cooling at RT for 20 minutes
Western Blot (WB)	2-4ug/ml	

### Product Details

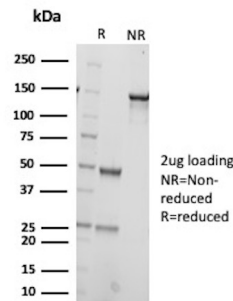
<b>Clone</b>	KRTH/2147R
<b>Immunogen</b>	Recombinant fragment of the rat Cytokeratin, HMW protein (exact sequence is proprietary)
<b>Host</b>	Rabbit
<b>Clonality</b>	Monoclonal
<b>Isotype / Light Chain</b>	IgG / Kappa
<b>Mol. Weight of Antigen</b>	65.84kDa
<b>Species Reactivity</b>	Human
<b>Positive Control</b>	MCF-7, PC12 cells, Prostate carcinoma., Skin

*\*Optimal dilution for a specific application should be determined.*

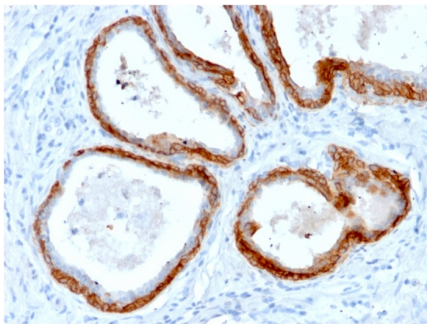
### Product Images for Recombinant Cytokeratin, Basic (Type II or HMW) Antibody



Immunofluorescence Analysis of MeOH-fixed Human MCF-7 cells labeling CK with CK HMW Rabbit Recombinant Monoclonal Antibody (KRTH/2147R) followed by Goat anti-Mouse IgG-CF488 (Green). The nuclear counterstain is Reddot (Red).



SDS-PAGE Analysis of Purified Keratin, type II cytoskeletal 2 oral Recombinant Rabbit Monoclonal Antibody (KRTH/2147R). Confirmation of Purity and Integrity of Antibody.



Formalin-fixed, paraffin-embedded human Prostate Carcinoma stained with CK HMW Rabbit Recombinant Monoclonal Antibody (KRTH/2147R).

---

### Specificity & Comments

This antibody recognizes CK1, CK5, CK10 and CK14. In normal epithelia, it stains stratified epithelia, myoepithelial cells and basal cells in the prostate gland and bronchi. This MAb shows no reactivity with hepatocytes, pancreatic acinar cells, proximal renal tubules, or endometrial glands; there is no reactivity with cells derived from simple epithelia. Mesenchymal tumors, lymphomas, melanomas, neural tumors, and neuroendocrine tumors are negative with this antibody. It stains myoepithelial cells and has been shown to be useful in distinguishing prostate adenocarcinoma from benign prostate. This antibody has also been useful in separating benign from malignant intraductal breast proliferations.

---

### Limitations and Warranty

This antibody is available for research use only and is not approved for use in diagnosis. There are no warranties, expressed or implied, which extend beyond this description. Company is not liable for any personal injury or economic loss resulting from this product.

---

### Supplied As

200ug/ml of Ab produced in a mammalian-based expression system. Prepared in 10mM PBS with 0.05% BSA & 0.05% azide. Also available WITHOUT BSA & azide at 1.0mg/ml.

---

### Storage and Stability

Antibody with azide - store at 2 to 8 °C. Antibody without azide - store at -20 to -80 °C. Antibody is stable for 24 months. Non-hazardous. No MSDS required.

---