

## Recombinant Hexa-Histidine (6 x His) Antibody

Rabbit Monoclonal Antibody [Clone 6HIS/6402R]

Catalog No	Format	Size
RBM2-6402-P0	Purified Ab with BSA and Azide at 200ug/ml	20 ug
RBM2-6402-P1	Purified Ab with BSA and Azide at 200ug/ml	100 ug
RBM2-6402-P1ABX	Purified Ab WITHOUT BSA or Azide at 1.0mg/ml	100 ug

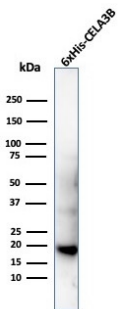
Applications	Tested Dillution	Note
Immunohistochemistry (IHC)	1-2ug/ml	30 min at RT. Staining of formalin-fixed tissues requires heating tissue sections in 10mM Tris with 1mM EDTA, pH 9.0, for 45 min at 95°C followed by cooling at RT for 20 minutes
Western Blot (WB)	2-4ug/ml	

### Product Details

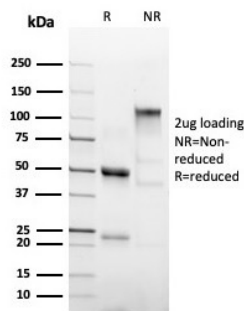
<b>Clone</b>	6HIS/6402R
<b>Immunogen</b>	Recombinant full-length human Hexa-Histidine (6 x His) protein
<b>Host</b>	Rabbit
<b>Clonality</b>	Monoclonal
<b>Isotype / Light Chain</b>	IgG / Kappa
<b>Species Reactivity</b>	Human
<b>Positive Control</b>	Hexa-histidine tagged proteins

\*Optimal dilution for a specific application should be determined.

### Product Images for Recombinant Hexa-Histidine (6 x His) Antibody



Western blot analysis of recombinant His-Tag CELA3B protein using Anti-Hexa-Histidine Recombinant Rabbit Monoclonal 6HIS/6402R).



SDS-PAGE Analysis of Purified Anti-Hexa-Histidine Recombinant Rabbit Monoclonal 6HIS/6402R). Confirmation of Integrity and Purity of Antibody.

### **Specificity & Comments**

It recognizes both the free and protein-conjugated (either soluble or cell bound) form of hexa-histidine. This MAb is highly specific to hexa-histidine and shows no cross-reaction with other structurally related compounds. It has a very high affinity for hexa-histidine and is excellent for use in various techniques. His-Tag Antibody detects recombinant proteins containing the 6xHis epitope tag. The antibody recognizes the 6xHis-tag fused to either the amino or carboxy terminus of targeted proteins in transfected cells. Epitope tags are useful for the labeling and detection of proteins using immunoblotting, immunoprecipitation, and immunostaining techniques. Because of their small size, they are unlikely to affect the tagged protein's biochemical properties. A variety of plasmids contain DNA that encodes an amino-terminal tag consisting of six histidine (6xHis) residues followed by an extended multiple cloning site. The 6xHis tag on the expressed recombinant proteins allows for efficient coupling to Ni<sup>2+</sup> affinity resins and purification by single step chromatography. As is the case with other protein tag systems, this polyhistidine tag can often be cleaved at sites recognized by proteases such as thrombin and enterokinases to isolate the protein of interest.

---

### **Limitations and Warranty**

This antibody is available for research use only and is not approved for use in diagnosis. There are no warranties, expressed or implied, which extend beyond this description. Company is not liable for any personal injury or economic loss resulting from this product.

---

### **Supplied As**

200ug/ml of Ab produced in a mammalian-based expression system. Prepared in 10mM PBS with 0.05% BSA & 0.05% azide. Also available WITHOUT BSA & azide at 1.0mg/ml.

---

### **Storage and Stability**

Antibody with azide - store at 2 to 8 °C. Antibody without azide - store at -20 to -80 °C. Antibody is stable for 24 months. Non-hazardous. No MSDS required.

---