

Recombinant CA19-9/Sialyl Lewisa (GI Tumor Marker) Antibody

Rabbit Monoclonal Antibody [Clone CA19.9/1390R]

Catalog No	Format	Size
RBM2-1390-P0	Purified Ab with BSA and Azide at 200ug/ml	20 ug
RBM2-1390-P1	Purified Ab with BSA and Azide at 200ug/ml	100 ug
RBM2-1390-P1ABX	Purified Ab WITHOUT BSA and Azide at 1.0mg/ml	100 ug

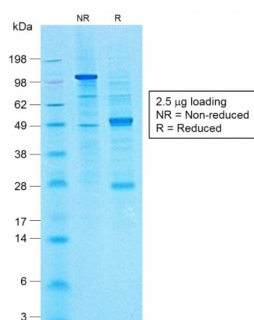
Applications	Tested Dillution	Note
Immunohistochemistry (IHC)	1-2ug/ml	30 min at RT. Staining of formalin-fixed tissues requires heating tissue sections in 10mM Tris with 1mM EDTA, pH 9.0, for 45 min at 95°C followed by cooling at RT for 20 minutes

Product Details

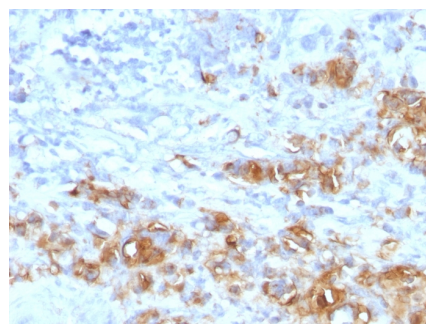
Clone	CA19.9/1390R
Immunogen	Purified human CA19-9 protein
Host	Rabbit
Clonality	Monoclonal
Isotype / Light Chain	IgG / Kappa
Mol. Weight of Antigen	>400kDa
Cellular Localization	N/A
Species Reactivity	Human
Positive Control	Stomach or Colon Carcinoma.

**Optimal dilution for a specific application should be determined.*

Product Images for Recombinant CA19-9/Sialyl Lewisa (GI Tumor Marker) Antibody



SDS-PAGE Analysis of Purified CA19-9 Rabbit Monoclonal Antibody (CA19.9/1390R).



Formalin-fixed, paraffin-embedded human Gastric Carcinoma stained with CA19-9 Rabbit Recombinant Monoclonal Antibody (CA19.9/1390R).

Specificity & Comments

CA19-9, a carbohydrate epitope expressed on a high MW (400kDa) mucin glycoprotein, is a sialyl Lewisa structure which is synthesized from type 1 blood group precursor chains and is present in individuals expressing the Lewisa and/or Lewisb blood group antigens. In normal tissues, sialyl Lewisa antigen is present in ductal epithelium of the breast, kidney, salivary gland, and sweat glands. Its expression is greatly enhanced in serum as well as in the majority of tumor cells in gastrointestinal (GI) carcinomas, including adenocarcinomas of the stomach, intestine, and pancreas. Preoperative elevated CA19-9 levels in patients with stage I pancreatic carcinoma decrease to normal values following surgery. When used serially, CA19-9 can predict recurrence of disease prior to radiographic or clinical findings. This MAb is excellent for staining of formalin fixed, paraffin embedded tissues.

Supplied As

200ug/ml of Ab Purified by Protein A column. Prepared in 10mM PBS with 0.05% BSA & 0.05% azide. Also available WITHOUT BSA and Azide at 1.0mg/ml.

Storage and Stability

Antibody with azide - store at 2 to 8°C. Antibody without azide - store at -20 to -80°C. Antibody is stable for 24 months. Non-hazardous. No MSDS required.

Limitations and Warranty

This antibody is available for research use only and is not approved for use in diagnosis. There are no warranties, expressed or implied, which extend beyond this description. Company is not liable for any personal injury or economic loss resulting from this product.
