

Cytokeratin, Acidic (Type I or LMW) (Epithelial Marker) Antibody

Mouse Monoclonal Antibody [Clone KRTL/1077]

Catalog No	Format	Size
MSM8-1077-P0	Purified Ab with BSA and Azide at 200ug/ml	20 ug
MSM8-1077-P1	Purified Ab with BSA and Azide at 200ug/ml	100 ug
MSM8-1077-P1ABX	Purified Ab WITHOUT BSA and Azide at 1.0mg/ml	100 ug

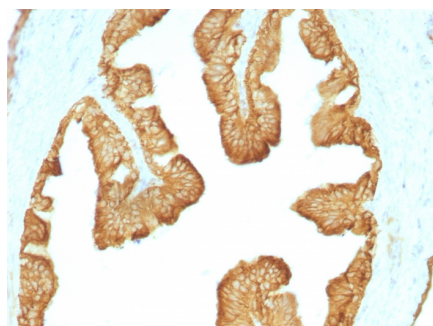
Applications	Tested Dillution	Note
Immunohistochemistry (IHC)	1-2ug/ml	30 min at RT. Staining of formalin-fixed tissues requires heating tissue sections in 10mM Tris with 1mM EDTA, pH 9.0, for 45 min at 95°C followed by cooling at RT for 20 minutes

Product Details

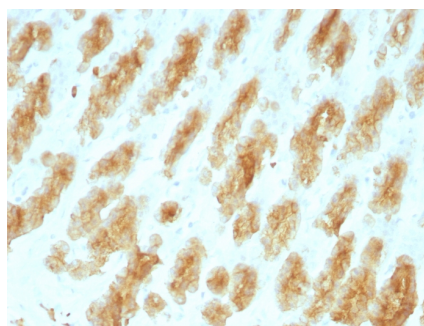
Clone	KRTL/1077
Gene Name	KRT77
Immunogen	Recombinant human KRT77 protein
Host	Mouse
Clonality	Monoclonal
Isotype / Light Chain	IgG1 / Kappa
Mol. Weight of Antigen	56.5kDa (CK10); 50kDa (CK14); 50kDa (CK15); 48kDa (CK16); 40kDa (CK19)
Species Reactivity	Human, Rat
Positive Control	Skin, Squamous cell carcinoma (SCC).

*Optimal dilution for a specific application should be determined.

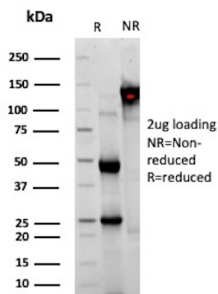
Product Images for Cytokeratin, Acidic (Type I or LMW) (Epithelial Marker) Antibody



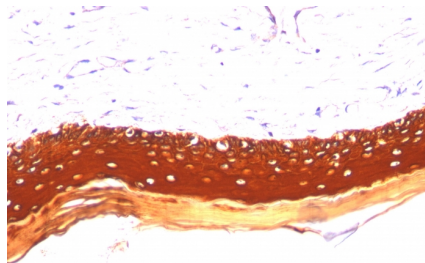
Formalin-fixed, paraffin-embedded Rat Oviduct stained with Cytokeratin, HMW Monoclonal Antibody (KRTL/1077).



Formalin-fixed, paraffin-embedded Rat Stomach with Cytokeratin, HMW Monoclonal Antibody (KRTL/1077).



SDS-PAGE Analysis of Purified Keratin, type II cytoskeletal 1b Mouse Monoclonal Antibody (KRTL/1077). Confirmation of Purity and Integrity of Antibody.



Formalin-fixed, paraffin-embedded human Skin stained with Cytokeratin, LMW Monoclonal Antibody (KRTL/1077).

Specificity & Comments

This MAb recognizes the 56.5kDa (CK10); 50kDa (CK14); 50kDa (CK15); 48kDa (CK16); 40kDa (CK19) keratins of the acidic (Type I or LMW) subfamily. Twenty human keratins are resolved with two-dimensional gel electrophoresis into acidic (pI 6.0) subfamilies. The acidic keratins have molecular weights (MW) of 56.5, 55, 51, 50, 50', 48, 46, 45, and 40kDa. Many studies have shown the usefulness of keratins as markers in cancer research and tumor diagnosis.

Supplied As

200ug/ml of Ab Purified from Bioreactor Concentrate by Protein A/G. Prepared in 10mM PBS with 0.05% BSA & 0.05% azide. Also available WITHOUT BSA & azide at 1.0mg/ml.

Storage and Stability

Antibody with azide - store at 2 to 8°C. Antibody without azide - store at -20 to -80°C. Antibody is stable for 24 months. Non-hazardous. No MSDS required.

Research Areas

Autophagy, Developmental Biology

Limitations and Warranty

This antibody is available for research use only and is not approved for use in diagnosis. There are no warranties, expressed or implied, which extend beyond this description. Company is not liable for any personal injury or economic loss resulting from this product.