

Recombinant Cytokeratin, pan (PAN-CK) Antibody

Mouse Monoclonal Antibody [Clone rPCK/6750]

Catalog No	Format	Size
MSM50-6750-P0	Purified Ab with BSA and Azide at 200ug/ml	20 ug
MSM50-6750-P1	Purified Ab with BSA and Azide at 200ug/ml	100 ug
MSM50-6750-P1ABX	Purified Ab WITHOUT BSA or Azide at 1.0mg/ml	100 ug

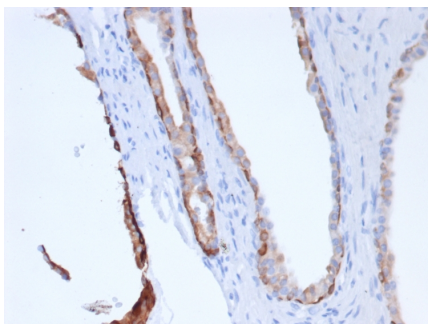
Applications	Tested Dillution	Note
Immunohistochemistry (IHC)	1-2ug/ml	30 min at RT. Staining of formalin-fixed tissues requires heating tissue sections in 10mM Tris with 1mM EDTA, pH 9.0, for 45 min at 95°C followed by cooling at RT for 20 minutes
Western Blot (WB)	2-4ug/ml	

Product Details

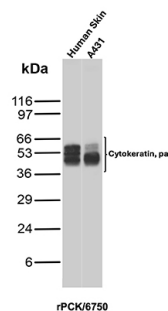
Clone	rPCK/6750
Immunogen	Human epidermal keratin
Host	Mouse
Clonality	Monoclonal
Isotype / Light Chain	IgG1 / Kappa
Species Reactivity	Human
Positive Control	adeno- or squamous carcinomas (IHC), Skin, A431.

*Optimal dilution for a specific application should be determined.

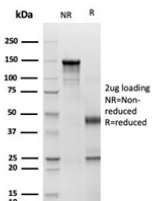
Product Images for Recombinant Cytokeratin, pan (PAN-CK) Antibody



Formalin-fixed, paraffin-embedded human Prostate stained with Pan-Cytokeratin Recombinant Mouse Monoclonal Antibody (rPCK/6750).



Western Blot Analysis of Human Skin and A431 lysates using Pan Cytokeratin Recombinant Mouse Monoclonal Antibody (rPCK/6750).



SDS-PAGE Analysis of Purified Pan CK Recombinant Mouse Monoclonal Antibody (rPCK/6750). Confirmation of Purity and Integrity of Antibody.

Specificity & Comments

Anti-cytokeratin clone rPCK/6750 (CK rPCK/6750) demonstrates a broad spectrum of cytokeratin reactivity. In normal tissues, rPCK/6750 is reactive with most epithelial types, including bile ducts and hepatocytes in liver, bladder epithelium, breast ducts, bronchial epithelium, endometrium, intestinal epithelium of stomach, duodenum, ileum, colon, rectum, pancreas, ovarian epithelium, pancreatic acini, pituitary acini, pneumocytes, prostate, thyroid, skin (positive on the basal layer and negative on the superficial layers of squamous epithelium), and apocrine and sweat glands. In tumors, rPCK/6750 is reactive with most carcinomas, including breast, transitional cell (TCC), renal cell (RCC), lung adenocarcinoma, lung small cell, lung squamous cell, endometrial, prostate, ovarian, hepatocellular (HCC), colorectal CA, stomach and thyroid. It is negative in certain normal tissues, including brain, lymphocytes and all cells of hematolymphoid origin, muscle, brain, nerves, endothelium and in certain tumors including most melanomas, sarcomas, lymphomas, primitive neuroectodermal tumors (PNET)/Ewings and gastrointestinal stromal tumors (GIST). Positivity has been seen on some dendritic cells in lymph nodes, some endothelia, and some muscle cells.

Limitations and Warranty

This antibody is available for research use only and is not approved for use in diagnosis. There are no warranties, expressed or implied, which extend beyond this description. Company is not liable for any personal injury or economic loss resulting from this product.

Supplied As

200ug/ml of Ab produced in a mammalian-based expression system. Prepared in 10mM PBS with 0.05% BSA & 0.05% azide. Also available WITHOUT BSA & azide at 1.0mg/ml.

Storage and Stability

Antibody with azide - store at 2 to 8 °C. Antibody without azide - store at -20 to -80 °C. Antibody is stable for 24 months. Non-hazardous. No MSDS required.
