

## Helicobacter pylori Antibody

Mouse Monoclonal Antibody [Clone HP/1335]

| Catalog No      | Format                                     | Size   |
|-----------------|--|--------|
| MSM5-1335-P0    | Purified Ab with BSA and Azide at 200ug/ml | 20 ug  |
| MSM5-1335-P1    | Purified Ab with BSA and Azide at 200ug/ml | 100 ug |
| MSM5-1335-P1ABX | Purified Ab WITHOUT BSA at 1.0mg/ml        | 100 ug |

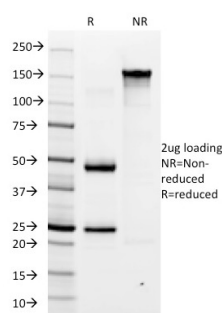
| Applications            | Tested Dillution    | Note |
|-------------------------|---------------------|------|
| Flow Cytometry (Flow)   | 1-2ug/million cells |      |
| Immunofluorescence (IF) | 1-3ug/ml            |      |

### Product Details

|                        |  |
|------------------------|--|
| Clone                  | HP/1335                                      |
| Immunogen              | Total sonicate of Helicobacter pylori        |
| Host                   | Mouse  |
| Clonality              | Monoclonal                                   |
| Isotype / Light Chain  | IgG1 / Kappa                                 |
| Mol. Weight of Antigen | Not Known                                    |
| Cellular Localization  | N/A  |
| Species Reactivity     | Helicobacter Pylori                          |
| Positive Control       | Helicobacter pylori infected stomach biopsy. |

*\*Optimal dilution for a specific application should be determined.*

### Product Images for Helicobacter pylori Antibody



SDS-PAGE Analysis of Purified Helicobacter pylori Mouse Monoclonal Antibody (HP/1335). Confirmation of Integrity and Purity of antibody.

### Specificity & Comments

The spiral shaped bacterium *Helicobacter pylori* is strongly associated with inflammation of the stomach and is also implicated in the development of gastric malignancy. *H. pylori* is known to cause peptic ulcers and chronic gastritis in human. It is associated with duodenal ulcers and may be involved in development of adenocarcinoma and low-grade lymphoma of mucosa associated lymphoid tissue in the stomach. This antibody stains the individual *H. pylori* bacterium when it presents on the surface of the epithelium or in the cytoplasm of the epithelial cells in biopsy tissue sections from the antrum and body of the stomach.

### Supplied As

200ug/ml of Ab Purified from Bioreactor Concentrate by Protein A/G. Prepared in 10mM PBS with 0.05% BSA & 0.05% azide. Also available WITHOUT BSA & azide at 1.0mg/ml.

### Storage and Stability

Antibody with azide - store at 2 to 8°C. Antibody without azide - store at -20 to -80°C. Antibody is stable for 24 months. Non-hazardous. No MSDS required.

### Limitations and Warranty

This antibody is available for research use only and is not approved for use in diagnosis. There are no warranties, expressed or implied, which extend beyond this description. Company is not liable for any personal injury or economic loss resulting from this product.