

## Ep-CAM / CD326 (Rat) Antibody

Mouse Monoclonal Antibody [Clone GZ-1]

| Catalog No     | Format  | Size   |
|----------------|---|--------|
| MSM4-381-P0    | Purified Ab with BSA and Azide at 200ug/ml    | 20 ug  |
| MSM4-381-P1    | Purified Ab with BSA and Azide at 200ug/ml    | 100 ug |
| MSM4-381-P1ABX | Purified Ab WITHOUT BSA and Azide at 1.0mg/ml | 100 ug |

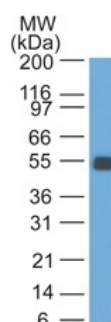
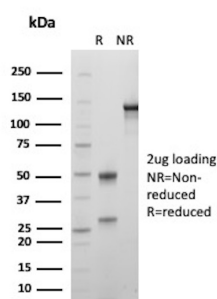
| Applications            | Tested Dillution    | Note |
|-------------------------|---------------------|------|
| Flow Cytometry (Flow)   | 1-2ug/million cells |      |
| Immunofluorescence (IF) | 1-3ug/ml            |      |
| Western Blot (WB)       | 2-4ug/ml            |      |

### Product Details

|                               |  |
|-------------------------------|--|
| <b>Clone</b>                  | GZ-1   |
| <b>Immunogen</b>              | Rat small intestine cells                            |
| <b>Host</b>                   | Mouse  |
| <b>Clonality</b>              | Monoclonal   |
| <b>Isotype / Light Chain</b>  | IgG1 / Kappa   |
| <b>Mol. Weight of Antigen</b> | 40-43kDa   |
| <b>Cellular Localization</b>  | Cell junction, Lateral cell membrane, Tight junction |
| <b>Species Reactivity</b>     | Rat  |
| <b>Positive Control</b>       | Rat small intestine or colon. Rat colon lysate.      |

*\*Optimal dilution for a specific application should be determined.*

### Product Images for Ep-CAM / CD326 (Rat) Antibody



SDS-PAGE Analysis of Purified Epithelial cell adhesion molecule Mouse Monoclonal Antibody (GZ-1). Confirmation of Purity and Integrity of Antibody.

Western Blot analysis of Rat Colon lysate probed with Ep-CAM Mouse Monoclonal Antibody (GZ-1).

### Specificity & Comments

Epitope of GZ-1 and GZ-20 monoclonal antibodies are different. EGP40 is a 40-43kDa transmembrane epithelial glycoprotein, also identified as epithelial specific antigen (ESA), or epithelial cellular adhesion molecule (Ep-CAM). It is expressed on basolateral cell surface in most simple epithelia and a vast majority of carcinomas.

### Supplied As

200ug/ml of Ab purified from Bioreactor Concentrate by Protein A/G. Prepared in 10mM PBS with 0.05% BSA & 0.05% azide. Also available WITHOUT BSA & azide at 1.0mg/ml.

### Storage and Stability

Antibody with azide - store at 2 to 8°C. Antibody without azide - store at -20 to -80°C. Antibody is stable for 24 months. Non-hazardous. No MSDS required.

### Limitations and Warranty

This antibody is available for research use only and is not approved for use in diagnosis. There are no warranties, expressed or implied, which extend beyond this description. Company is not liable for any personal injury or economic loss resulting from this product.