

HPV-16 (Human Papilloma Virus 16) Antibody

Mouse Monoclonal Antibody [Clone HPV16/1296]

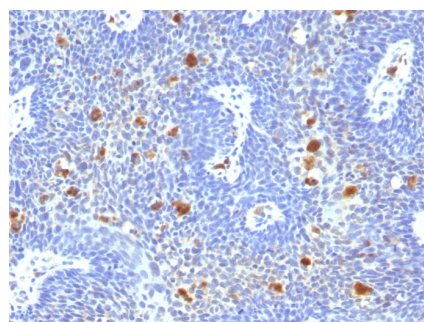
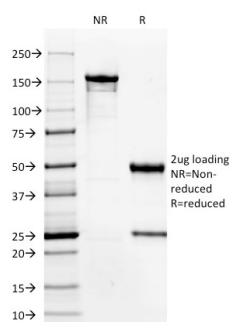
Catalog No	Format	Size
MSM4-1296-P0	Purified Ab with BSA and Azide	200ug/ml
MSM4-1296-P1	Purified Ab with BSA and Azide	200ug/ml
MSM4-1296-P1ABX	Purified Ab WITHOUT BSA and Azide	1.0mg/ml

Applications	Tested Dillution
Immunohistochemistry (IHC)	1-2ug/ml

Product Details	
Clone	HPV16/1296
Gene Name	N/A
Immunogen	HPV-16 E6 peptide (MHQKRTAMFQDPPQERPRKLPQLC)
Host	Mouse
Clonality	Monoclonal
Isotype / Light Chain	IgG2a / Kappa
Mol. Weight of Antigen	16kDa
Cellular Localization	N/A
Species Reactivity	HPV-16
Positive Control	HPV-16 infected cells. Cervical tissue.

**Optimal dilution for a specific application should be determined.*

Product Images for HPV-16 (Human Papilloma Virus 16) Antibody



SDS-PAGE Analysis of Purified HPV-16 Mouse Monoclonal Antibody (HPV16/1296). Confirmation of Purity and Integrity of Antibody.

Formalin-fixed, paraffin-embedded human Cervix stained with HPV-16 Mouse Monoclonal Antibody (HPV16/1296).

Specificity & Comments

Reacts with E6 protein of human papilloma virus type 16 (HPV-16). Infection with specific types of HPV has been associated with an increased risk of developing cervical neoplasia. HPV types 6 and 11 have been associated with relatively benign diseases such as genital warts but types 16 and 18 are strongly associated with cervical, vaginal, and vulvar malignancies. The antibody reacts very strongly with formalin-fixed, paraffin-embedded tissues containing HPV-16.

Research Areas

Microbiology

Known Applications & Suggested Dilutions

Immunohistochemistry (Formalin-fixed) (1-2ug/ml for 30 minutes at RT)(Staining of formalin-fixed tissues requires heating tissue sections in 10mM Tris with 1mM EDTA, pH 9.0, for 45 min at 95°C followed by cooling at RT for 20 minutes) | Optimal dilution for a specific application should be determined.

Limitations and Warranty

This antibody is available for research use only and is not approved for use in diagnosis.

There are no warranties, expressed or implied, which extend beyond this description. Company is not liable for any personal injury or economic loss resulting from this product.

Supplied As

200ug/ml of Ab Purified from Bioreactor Concentrate by Protein A/G. Prepared in 10mM PBS with 0.05% BSA & 0.05% azide. Also available WITHOUT BSA & azide at 1.0mg/ml.

Storage and Stability

Antibody with azide - store at 2 to 8°C. Antibody without azide - store at -20 to -80°C. Antibody is stable for 24 months. Non-hazardous. No MSDS required.