

Cytokeratin, pan (Epithelial Marker) Antibody

Mouse Monoclonal Antibody [Clone PCK/3150]

Catalog No	Format	Size
MSM39-3150-P0	Purified Ab with BSA and Azide at 200ug/ml	20 ug
MSM39-3150-P1	Purified Ab with BSA and Azide at 200ug/ml	100 ug
MSM39-3150-P1ABX	Purified Ab WITHOUT BSA and Azide at 1.0mg/ml	100 ug

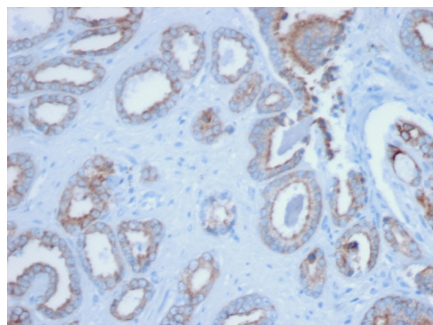
Applications	Tested Dillution	Note
Flow Cytometry (Flow)	1-2ug/million cells	
Immunofluorescence (IF)	1-3ug/ml	
Immunohistochemistry (IHC)	1-2ug/ml	30 min at RT. Staining of formalin-fixed tissues requires heating tissue sections in 10mM Tris with 1mM EDTA, pH 9.0, for 45 min at 95°C followed by cooling at RT for 20 minutes

Product Details

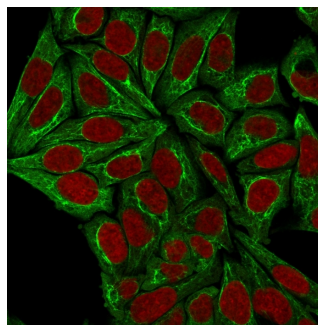
Clone	PCK/3150
Gene Name	N/A
Immunogen	Crude cytokeratin extract prepared from RT-4 and MCF-7 cells.
Host	Mouse
Clonality	Monoclonal
Isotype / Light Chain	IgG2a / Kappa
Mol. Weight of Antigen	40-67kDa (Multiple)
Cellular Localization	N/A
Species Reactivity	Cat, Dog, Human
Positive Control	adeno- or squamous carcinomas (IHC)., Skin

*Optimal dilution for a specific application should be determined.

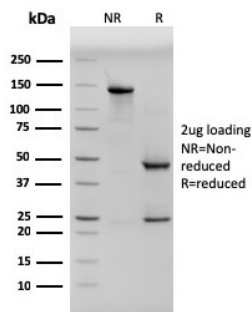
Product Images for Cytokeratin, pan (Epithelial Marker) Antibody



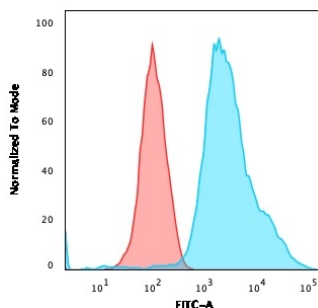
Formalin-fixed, paraffin-embedded human Prostate stained with Pan-Cytokeratin Mouse Monoclonal Antibody (PCK/3150).



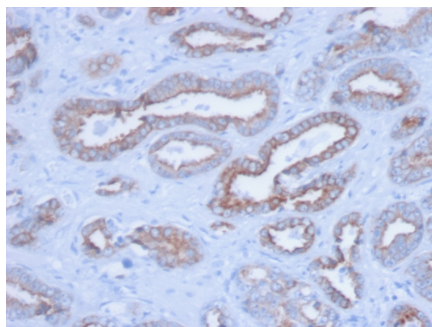
Immunofluorescence staining of HeLa cells using Pan-Cytokeratin Mouse Monoclonal Antibody (PCK/3150) followed by goat anti-Mouse IgG conjugated to CF488 (green). Nucleus stained with Reddot (Red).



SDS-PAGE Analysis Purified Pan-Cytokeratin Mouse Monoclonal Antibody (PCK/3150). Confirmation of Purity and Integrity of Antibody.



Flow Cytometric Analysis of HeLa cells using Pan-Cytokeratin Mouse Monoclonal Antibody (PCK/3150) followed by goat anti-Mouse IgG-CF488 (Blue); Isotype Control (Red).



Formalin-fixed, paraffin-embedded human Prostate stained with Pan-Cytokeratin Mouse Monoclonal Antibody (PCK/3150).

Specificity & Comments

Anti-cytokeratin clone PCK/3150 demonstrates a broad spectrum of cytokeratin reactivity. In normal tissues, PCK/3150 is reactive with most epithelial types, including bile ducts and hepatocytes in liver, bladder epithelium, breast ducts, bronchial epithelium, endometrium, intestinal epithelium of stomach, duodenum, ileum, colon, rectum, pancreas, ovarian epithelium, pancreatic acini, pituitary acini, pneumocytes, prostate, thyroid, skin (positive on the basal layer and negative on the superficial layers of squamous epithelium), and apocrine and sweat glands. In tumors, PCK/3150 is reactive with most carcinomas, including breast, transitional cell (TCC), renal cell (RCC), lung adenocarcinoma, lung small cell, lung squamous cell, endometrial, prostate, ovarian, hepatocellular (HCC), colorectal CA, stomach and thyroid. It is negative in certain normal tissues, including brain, lymphocytes and all cells of hematolymphoid origin, muscle, brain, nerves, endothelium and in certain tumors including most melanomas, sarcomas, lymphomas, primitive neuroectodermal tumors (PNET)/Ewings and gastrointestinal stromal tumors (GIST). Positivity has been seen on some dendritic cells in lymph nodes, some endothelia, and some muscle cells.

Limitations and Warranty

This antibody is available for research use only and is not approved for use in diagnosis. There are no warranties, expressed or implied, which extend beyond this description. Company is not liable for any personal injury or economic loss resulting from this product.

Supplied As

200ug/ml of Ab Purified from Bioreactor Concentrate by Protein A/G. Prepared in 10mM PBS with 0.05% BSA & 0.05% azide. Also available WITHOUT BSA & azide at 1.0mg/ml.

Storage and Stability

Antibody with azide - store at 2 to 8°C. Antibody without azide - store at -20 to -80°C. Antibody is stable for 24 months. Non-hazardous. No MSDS required.