

Recombinant Cytokeratin, Basic (Type II or HMW) Antibody

Mouse Monoclonal Antibody [Clone rKRTH/2148]

| Catalog No | Format | Size |
|------------------|---|--------|
| MSM32-2148-P0 | Purified Ab with BSA and Azide at 200ug/ml | 20 ug |
| MSM32-2148-P1 | Purified Ab with BSA and Azide at 200ug/ml | 100 ug |
| MSM32-2148-P1ABX | Purified Ab WITHOUT BSA and Azide at 1.0mg/ml | 100 ug |

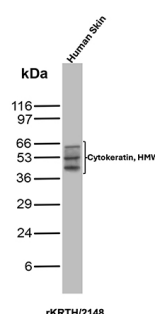
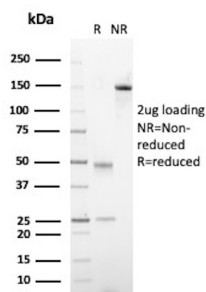
| Applications | Tested Dillution | Note |
|----------------------------|------------------|---|
| Immunohistochemistry (IHC) | 1-2ug/ml | 30 min at RT. Staining of formalin-fixed tissues requires heating tissue sections in 10mM Tris with 1mM EDTA, pH 9.0, for 45 min at 95°C followed by cooling at RT for 20 minutes |
| Western Blot (WB) | 2-4ug/ml | |

Product Details

| | |
|-------------------------------|--|
| Clone | rKRTH/2148 |
| Gene Name | KRT76 |
| Immunogen | Solubilized keratin extract from human stratum corneum |
| Host | Mouse |
| Clonality | Monoclonal |
| Isotype / Light Chain | IgG1 / Kappa |
| Mol. Weight of Antigen | 50-67kDa |
| Species Reactivity | Human, Mouse, Rat |
| Positive Control | PC12 cells, Prostate carcinoma., Skin |

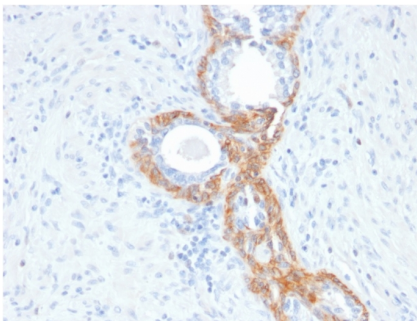
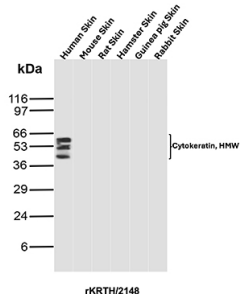
**Optimal dilution for a specific application should be determined.*

Product Images for Recombinant Cytokeratin, Basic (Type II or HMW) Antibody



SDS-PAGE Analysis of Purified Keratin, type II cytoskeletal 2 oral Recombinant Mouse Monoclonal Antibody (rKRTH/2148). Confirmation of Purity and Integrity of Antibody.

Western Blot Analysis of Human Skin tissue lysates using WT1 Recombinant Mouse Monoclonal Antibody (rKRTH/2148).



Western Blot Analysis of Skin tissue lysates of different species using WT1 Recombinant Mouse Monoclonal Antibody (rKRTH/2148).

Formalin-fixed, paraffin-embedded human Prostate Carcinoma stained with CK HMW Mouse Recombinant Monoclonal Antibody (rKRTH/2148).

Specificity & Comments

This antibody recognizes CK1, CK5, CK10 and CK14. In normal epithelia, it stains stratified epithelia, myoepithelial cells and basal cells in the prostate gland and bronchi. This MAb shows no reactivity with hepatocytes, pancreatic acinar cells, proximal renal tubules, or endometrial glands; there is no reactivity with cells derived from simple epithelia. Mesenchymal tumors, lymphomas, melanomas, neural tumors, and neuroendocrine tumors are negative with this antibody. It stains myoepithelial cells and has been shown to be useful in distinguishing prostate adenocarcinoma from benign prostate. This antibody has also been useful in separating benign from malignant intraductal breast proliferations.

Supplied As

200ug/ml of Ab produced in HEK293 cell mammalian-based expression system. Prepared in 10mM PBS with 0.05% BSA & 0.05% azide. Also available WITHOUT BSA & azide at 1.0mg/ml.

Storage and Stability

Antibody with azide - store at 2 to 8°C. Antibody without azide - store at -20 to -80°C. Antibody is stable for 24 months. Non-hazardous. No MSDS required.

Research Areas

Developmental Biology

Limitations and Warranty

This antibody is available for research use only and is not approved for use in diagnosis. There are no warranties, expressed or implied, which extend beyond this description. Company is not liable for any personal injury or economic loss resulting from this product.