



Human Nuclear Antigen (HNA) (Human Cell Marker) Antibody

Mouse Monoclonal Antibody [Clone 235-1]

Catalog No	Format	Size
MSM3-99-P0	Purified Ab with BSA and Azide at 200ug/ml	20 ug
MSM3-99-P1	Purified Ab with BSA and Azide at 200ug/ml	100 ug
MSM3-99-P1ABX	Purified Ab WITHOUT BSA and Azide at 1.0mg/ml	100 ug

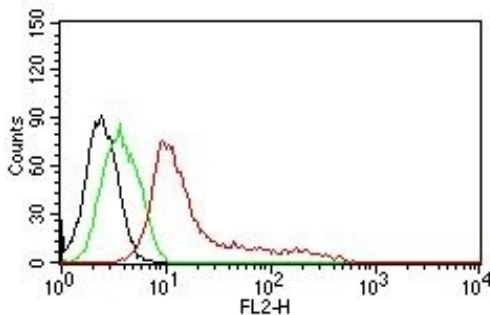
Applications	Tested Dillution	Note
Flow Cytometry (Flow)	1-2ug/million cells	
Immunofluorescence (IF)	1-3ug/ml	

Product Details

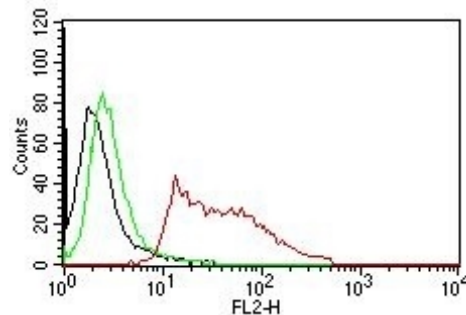
Clone	235-1
Gene Name	N/A
Immunogen	Nuclei of human myeloid leukemia biopsy cells
Host	Mouse
Clonality	Monoclonal
Isotype / Light Chain	IgG1
Mol. Weight of Antigen	70kDa & 80kDa
Cellular Localization	N/A, nuclei
Species Reactivity	Human
Positive Control	All human cells. Tissues.

*Optimal dilution for a specific application should be determined.

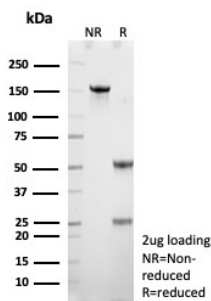
Product Images for Human Nuclear Antigen (HNA) (Human Cell Marker) Antibody



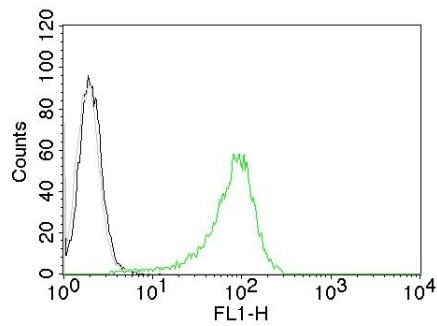
Flow Cytometric analysis of Human Nuclear Antigen on MCF-7 cells. Black: cells alone; Green: Isotype Control; Red: PE-labeled HNA Monoclonal Antibody (235-1).



Flow Cytometric analysis of Human Nuclear Antigen on HeLa cells. Black: cells alone; Green: Isotype Control; Red: PE-labeled HNA Monoclonal Antibody (235-1).



SDS-PAGE Analysis Purified Human-Nuclear-Antigen Mouse Monoclonal Antibody (235-1). Confirmation of Purity and Integrity of Antibody.



Flow Cytometry of Human Nuclear Ag (HNA) on 293T cells. Black: Cells alone; Grey: Isotype Control; Green: CF488-labeled HNA MAb (235-1).

Specificity & Comments

This monoclonal antibody is an excellent marker for human cells in xenographic model research. It reacts specifically with human cells. It is a part of a new panel of reagents, which recognizes subcellular organelles or compartments of human cells. These markers may be useful in identification of these organelles in cells, tissues, and biochemical preparations. MAb 235-1 recognizes an antigen associated with the nuclei in human cells. It can be used to stain the nuclei in cell or tissue preparations and can be used as a nuclear marker in subcellular fractions. It produces a speckled pattern in normal and malignant cells and may be used to stain the nuclei of cells in fixed or frozen tissue sections. It can also be used with paraformaldehyde fixed frozen tissue or cell preparations.

Limitations and Warranty

This antibody is available for research use only and is not approved for use in diagnosis. There are no warranties, expressed or implied, which extend beyond this description. Company is not liable for any personal injury or economic loss resulting from this product.

Supplied As

200ug/ml of Ab purified from Bioreactor Concentrate by Protein A/G. Prepared in 10mM PBS with 0.05% BSA & 0.05% azide. Also available WITHOUT BSA & azide at 1.0mg/ml.

Storage and Stability

Antibody with azide - store at 2 to 8 °C. Antibody without azide - store at -20 to -80 °C. Antibody is stable for 24 months. Non-hazardous. No MSDS required.