

## Mitochondrial Marker Antibody

Mouse Monoclonal Antibody [Clone MTC719]

Catalog No	Format	Size
MSM3-719-P0	Purified Ab with BSA and Azide at 200ug/ml	20 ug
MSM3-719-P1	Purified Ab with BSA and Azide at 200ug/ml	100 ug
MSM3-719-P1ABX	Purified Ab WITHOUT BSA and Azide at 1.0mg/ml	100 ug

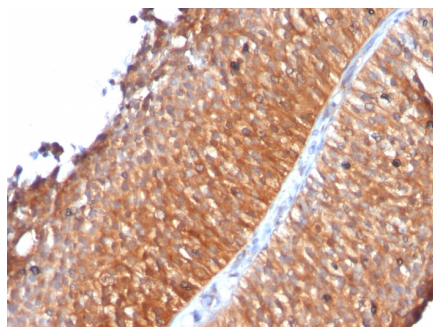
Applications	Tested Dillution	Note
Flow Cytometry (Flow)	1-2ug/million cells	
Immunofluorescence (IF)	1-3ug/ml	
Immunohistochemistry (IHC)	1-2ug/ml	30 min at RT. Staining of formalin-fixed tissues requires heating tissue sections in 10mM Tris with 1mM EDTA, pH 9.0, for 45 min at 95°C followed by cooling at RT for 20 minutes
Western Blot (WB)	2-4ug/ml	

### Product Details

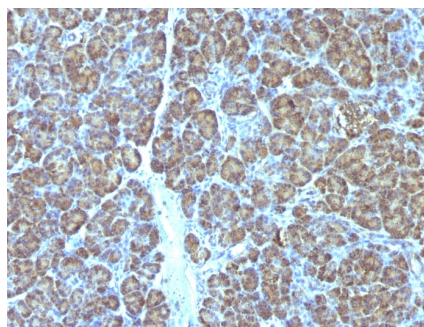
<b>Clone</b>	MTC719
<b>Gene Name</b>	N/A
<b>Immunogen</b>	Mitochondrial fraction of HeLa cells
<b>Host</b>	Mouse
<b>Clonality</b>	Monoclonal
<b>Isotype / Light Chain</b>	IgG1 / Kappa
<b>Mol. Weight of Antigen</b>	60kDa
<b>Cellular Localization</b>	N/A
<b>Species Reactivity</b>	Human
<b>Positive Control</b>	HeLa or HepG2 cells. Hepatic carcinomas.

\*Optimal dilution for a specific application should be determined.

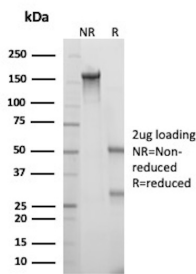
### Product Images for Mitochondrial Marker Antibody



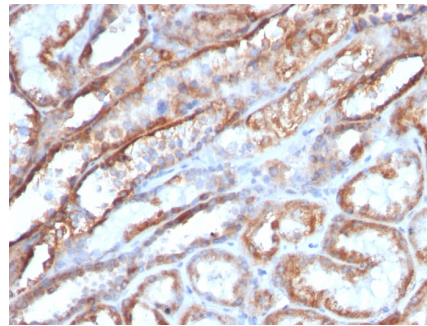
Formalin-fixed, paraffin-embedded human Bladder Carcinoma stained with Mitochondria Monoclonal Antibody (MTC719)



Formalin-fixed, paraffin-embedded human Pancreas stained with Mitochondria Monoclonal Antibody (MTC719).



SDS-PAGE Analysis of Purified N/A Mouse Monoclonal Antibody (MTC719). Confirmation of Purity and Integrity of Antibody.



Formalin-fixed, paraffin-embedded human Renal Cell Carcinoma stained with Mitochondria Monoclonal Antibody (MTC719)

### Specificity & Comments

This MAb recognizes a 60kDa antigen associated with the mitochondria in cells. It is a part of a new panel of reagents, which recognizes subcellular organelles or compartments of cells. These markers may be useful in identification of these organelles in cells, tissues, and biochemical preparations. It recognizes an antigen associated with the mitochondria in cells from a wide variety of animals, but not insects and bacteria. It can be used to stain the mitochondria in cell or tissue preparations and can be used as a mitochondrial marker in subcellular fractions. It produces a spaghetti-like pattern in normal and malignant cells and may be used to stain mitochondria of cells in fixed or frozen tissue sections. It can also be used with paraformaldehyde fixed frozen tissue or cell preparations.

### Limitations and Warranty

This antibody is available for research use only and is not approved for use in diagnosis. There are no warranties, expressed or implied, which extend beyond this description. Company is not liable for any personal injury or economic loss resulting from this product.

### Supplied As

200ug/ml of Ab Purified from Bioreactor Concentrate by Protein A/G. Prepared in 10mM PBS with 0.05% BSA & 0.05% azide. Also available WITHOUT BSA at 1.0mg/ml.

### Storage and Stability

Antibody with azide - store at 2 to 8°C. Antibody is stable for 24 months. Non-hazardous. No MSDS required.