

Lewis Y (Tumor Marker) Antibody

Mouse Monoclonal Antibody [Clone LWY/1463]

Catalog No	Format	Size
MSM3-1463-P0	Purified Ab with BSA and Azide at 200ug/ml	20 ug
MSM3-1463-P1	Purified Ab with BSA and Azide at 200ug/ml	100 ug
MSM3-1463-P1ABX	Purified Ab WITHOUT BSA and Azide at 1.0mg/ml	100 ug

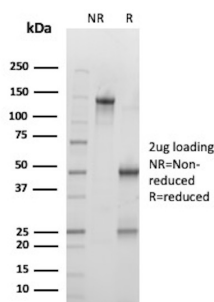
Applications	Tested Dillution	Note
Immunohistochemistry (IHC)	1-2ug/ml	30 min at RT. Staining of formalin-fixed tissues requires heating tissue sections in 10mM Tris with 1mM EDTA, pH 9.0, for 45 min at 95°C followed by cooling at RT for 20 minutes

Product Details

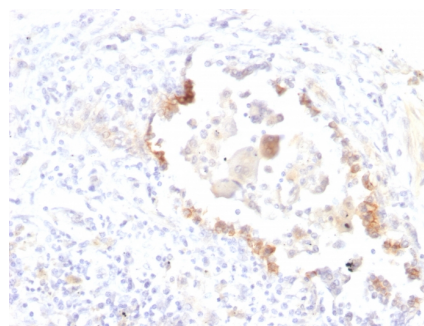
Clone	LWY/1463
Gene Name	N/A
Immunogen	Human colon carcinoma cells
Host	Mouse
Clonality	Monoclonal
Isotype / Light Chain	IgG1 / Kappa
Mol. Weight of Antigen	Multiple
Cellular Localization	N/A
Species Reactivity	Human
Positive Control	Bladder or Hepatocellular Carcinoma., Colon, Lung

*Optimal dilution for a specific application should be determined.

Product Images for Lewis Y (Tumor Marker) Antibody



SDS-PAGE Analysis of Purified N/A Mouse Monoclonal Antibody (LWY/1463). Confirmation of Purity and Integrity of Antibody.



Formalin-fixed, paraffin-embedded human Lung Carcinoma stained with Lewis Y Monoclonal Antibody (LWY/1463).

Specificity & Comments

This antibody recognizes a carbohydrate epitope present on tumor-associated Lewis Y antigen (Fucalpha1-2Galbeta1-4/3[Fucalpha1-3/4]GlcNAcbeta-). Lewis Y is expressed in large bowel tumors and colorectal carcinomas. It may be useful in the classification of human renal and bladder tumors. The Lewis Y antigen has been evaluated as a clinical marker for the diagnosis and prognosis of cholangiocarcinoma, hepatocellular carcinoma and breast cancer.

Supplied As

200ug/ml of Ab Purified from Bioreactor Concentrate by Protein A/G. Prepared in 10mM PBS with 0.05% BSA & 0.05% azide. Also available WITHOUT BSA & azide at 1.0mg/ml.

Storage and Stability

Antibody with azide - store at 2 to 8°C. Antibody without azide - store at -20 to -80°C. Antibody is stable for 24 months. Non-hazardous. No MSDS required.

Limitations and Warranty

This antibody is available for research use only and is not approved for use in diagnosis. There are no warranties, expressed or implied, which extend beyond this description. Company is not liable for any personal injury or economic loss resulting from this product.