

Actin, Muscle Specific (Muscle Cell Marker) Antibody

Mouse Monoclonal Antibody [Clone HHF35 + MSA/953]

Catalog No	Format	Size
MSM3-1013-P0	Purified Ab with BSA and Azide at 200ug/ml	20 ug
MSM3-1013-P1	Purified Ab with BSA and Azide at 200ug/ml	100 ug
MSM3-1013-P1ABX	Purified Ab WITHOUT BSA and Azide at 1.0mg/ml	100 ug

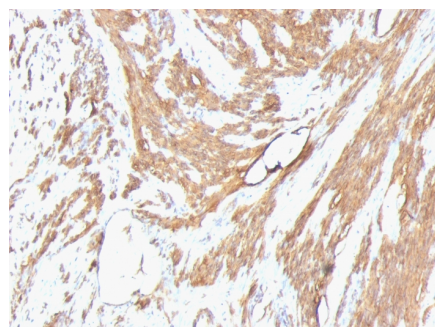
Applications	Tested Dillution	Note
Flow Cytometry (Flow)	1-2ug/million cells	
Immunofluorescence (IF)	1-3ug/ml	
Immunohistochemistry (IHC)	1-2ug/ml	30 min at RT. Staining of formalin-fixed tissues requires heating tissue sections in 10mM Tris with 1mM EDTA, pH 9.0, for 45 min at 95°C followed by cooling at RT for 20 minutes

Product Details

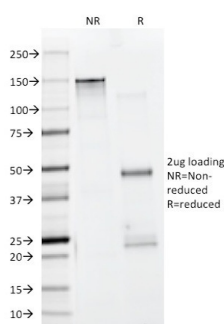
Clone	HHF35 + MSA/953
Gene Name	ACTA2
Immunogen	Recombinant human actin fragment
Host	Mouse
Clonality	Monoclonal
Isotype / Light Chain	IgG1 / Kappa
Mol. Weight of Antigen	Multiple
Cellular Localization	Cytoplasm, Cytoskeleton
Species Reactivity	Cat, Dog, Human, Rabbit, Rat
Positive Control	Muscle or sarcoma.

**Optimal dilution for a specific application should be determined.*

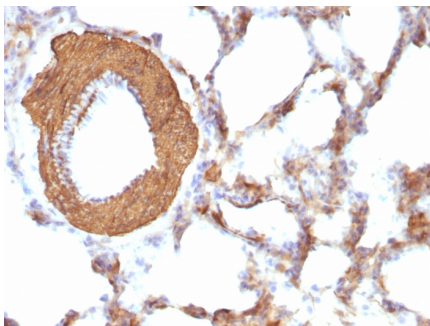
Product Images for Actin, Muscle Specific (Muscle Cell Marker) Antibody



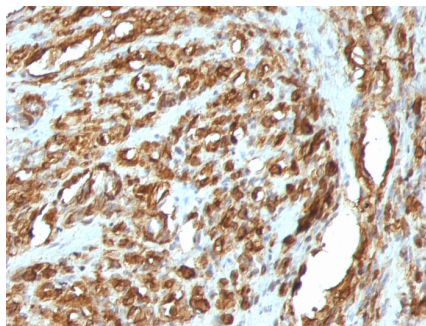
Formalin-fixed, paraffin-embedded human Leiomyosarcoma stained with Muscle Specific Actin Monoclonal Antibody (HHF35 + MSA/953)



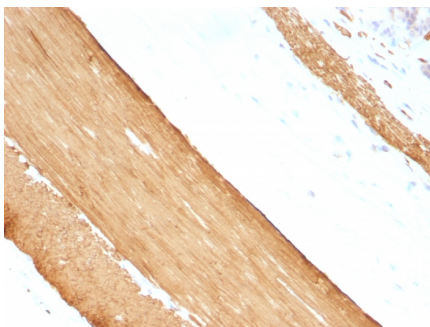
SDS-PAGE Analysis Purified Muscle Specific Actin Monoclonal Antibody (HHF35 + MSA/953). Confirmation of Purity and Integrity of Antibody.



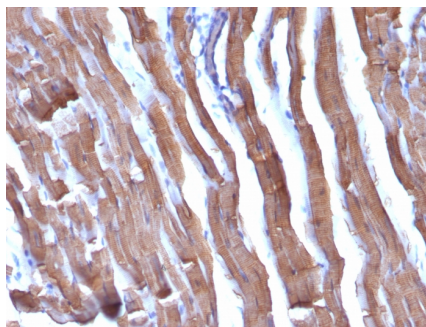
Formalin-fixed, paraffin-embedded Rat Lung stained with Muscle Specific Actin MAb (HHF35 + MSA/953)



Formalin-fixed, paraffin-embedded human Rhabdomyosarcoma stained with Muscle Specific Actin MAb (HHF35 + MSA/953)



Formalin-fixed, paraffin-embedded Rat Stomach stained with Muscle Specific Actin MAb (HHF35 + MSA/953)



Formalin-fixed, paraffin-embedded Rat Heart stained with Muscle Specific Actin Monoclonal Antibody (HHF35 + MSA/953)

Specificity & Comments

This antibody recognizes actin of skeletal, cardiac, and smooth muscle cells. It is not reactive with other mesenchymal cells except for myoepithelium. Actin can be resolved on the basis of its isoelectric points into three distinctive components: alpha, beta, and gamma in order of increasing isoelectric point. Anti-muscle specific actin recognizes alpha and gamma isotypes of all muscle groups. Non-muscle cells such as vascular endothelial cells and connective tissues are non-reactive. Also, neoplastic cells of non-muscle-derived tissue such as carcinomas, melanomas, and lymphomas are negative. It stains tumors of smooth muscle (leiomyomas and leiomyosarcomas) as well as skeletal muscle (rhabdomyomas and rhabdomyosarcomas).

Limitations and Warranty

This antibody is available for research use only and is not approved for use in diagnosis. There are no warranties, expressed or implied, which extend beyond this description. Company is not liable for any personal injury or economic loss resulting from this product.

Supplied As

200ug/ml of Ab Purified from Bioreactor Concentrate by Protein A/G. Prepared in 10mM PBS with 0.05% BSA & 0.05% azide. Also available WITHOUT BSA & azide at 1.0mg/ml.

Storage and Stability

Antibody with azide - store at 2 to 8°C. Antibody without azide - store at -20 to -80°C. Antibody is stable for 24 months. Non-hazardous. No MSDS required.