

## Cytokeratin 8/18 Antibody

Mouse Monoclonal Antibody [Clone B22.1/B23.1]

Catalog No	Format	Size
MSM20-1221-P0	Purified Ab with BSA and Azide at 200ug/ml	20 ug
MSM20-1221-P1	Purified Ab with BSA and Azide at 200ug/ml	100 ug
MSM20-1221-P1ABX	Purified Ab WITHOUT BSA and Azide at 1.0mg/ml	100 ug

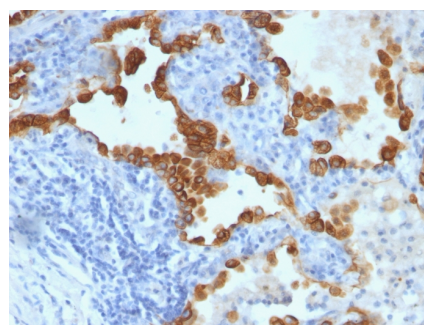
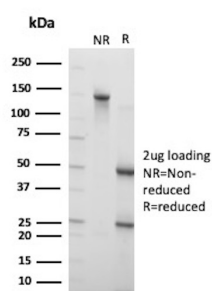
Applications	Tested Dillution	Note
Flow Cytometry (Flow)	1-2ug/million cells	
Immunofluorescence (IF)	1-3ug/ml	
Immunohistochemistry (IHC)	1-2ug/ml	30 min at RT. Staining of formalin-fixed tissues requires heating tissue sections in 10mM Tris with 1mM EDTA, pH 9.0, for 45 min at 95°C followed by cooling at RT for 20 minutes
Western Blot (WB)	2-4ug/ml	

### Product Details

<b>Clone</b>	B22.1/B23.1
<b>Immunogen</b>	Cytoskeletal preparation from HeLa epitheliod carcinoma cells (B22.1) and PMC-42 breast carcinoma cells of human origin (B23.1)
<b>Host</b>	Mouse
<b>Clonality</b>	Monoclonal
<b>Isotype / Light Chain</b>	IgG1 / Kappa
<b>Mol. Weight of Antigen</b>	52.5kDa (CK8); 45kDa (CK18)
<b>Cellular Localization</b>	Cytoplasm, Nucleoplasm, Nucleus, Nucleus matrix
<b>Species Reactivity</b>	Human
<b>Positive Control</b>	Colon, HeLa, lung or breast carcinoma., MCF-7, PMC-42 or A431 cells. Skin

*\*Optimal dilution for a specific application should be determined.*

### Product Images for Cytokeratin 8/18 Antibody



SDS-PAGE Analysis of Purified Keratin, type II cytoskeletal 8 Mouse Monoclonal Antibody (B22.1/B23.1). Confirmation of Purity and Integrity of Antibody.

Formalin-fixed, paraffin-embedded human Lung Carcinoma stained with Cytokeratin 8/18 Monoclonal Antibody (B22.1 + B23.1).

### Specificity & Comments

Cytokeratin 8 (CK8) belongs to the type II (or B or basic) subfamily of high molecular weight cytokeratins and exists in combination with cytokeratin 18 (CK18). This MAb cocktail recognizes all simple epithelia including glandular epithelium, for example thyroid, female breast, gastrointestinal tract, respiratory tract, and urogenital tract including transitional epithelium. All adenocarcinomas and most squamous carcinomas are positive but keratinizing squamous carcinomas are usually negative. This antibody is useful in demonstrating the presence of Paget cells; there is very little keratin 18 in the normal epidermis so only Paget cells are stained. Immunohistochemical staining with this MAb is indistinguishable from that obtained with monoclonal antibody 5D3.

---

### Limitations and Warranty

This antibody is available for research use only and is not approved for use in diagnosis. There are no warranties, expressed or implied, which extend beyond this description. Company is not liable for any personal injury or economic loss resulting from this product.

---

### Supplied As

200ug/ml of Ab Purified from Bioreactor Concentrate by Protein A/G. Prepared in 10mM PBS with 0.05% BSA & 0.05% azide. Also available WITHOUT BSA & azide at 1.0mg/ml.

---

### Storage and Stability

Antibody with azide - store at 2 to 8°C. Antibody without azide - store at -20 to -80°C. Antibody is stable for 24 months. Non-hazardous. No MSDS required.

---