

Lewis A (Blood Group Antigen) Antibody

Mouse Monoclonal Antibody [Clone SPM522]

Catalog No	Format	Size
MSM1XX-311-P0	Purified Ab with BSA and Azide at 200ug/ml	20 ug
MSM1XX-311-P1	Purified Ab with BSA and Azide at 200ug/ml	100 ug
MSM1XX-311-P1ABX	Purified Ab WITHOUT BSA and Azide at 1.0mg/ml	100 ug

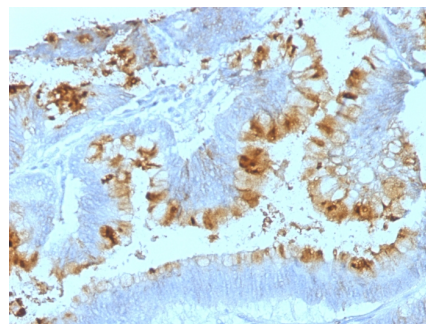
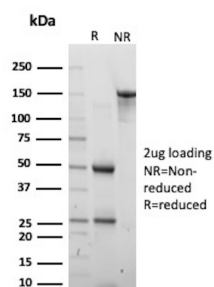
Applications	Tested Dillution	Note
Flow Cytometry (Flow)	1-2ug/million cells	
Immunofluorescence (IF)	1-3ug/ml	
Immunohistochemistry (IHC)	1-2ug/ml	30 min at RT. Staining of formalin-fixed tissues requires heating tissue sections in 10mM Tris with 1mM EDTA, pH 9.0, for 45 min at 95°C followed by cooling at RT for 20 minutes

Product Details

Clone	SPM522
Gene Name	N/A
Immunogen	Mucins isolated from ovarian cyst fluid
Host	Mouse
Clonality	Monoclonal
Isotype / Light Chain	IgG1 / Kappa
Mol. Weight of Antigen	Multiple
Cellular Localization	N/A
Species Reactivity	Human, Mouse
Positive Control	Colon tissue.

*Optimal dilution for a specific application should be determined.

Product Images for Lewis A (Blood Group Antigen) Antibody



SDS-PAGE Analysis of Purified N/A Mouse Monoclonal Antibody (SPM522). Confirmation of Purity and Integrity of Antibody.

Formalin-fixed, paraffin-embedded human Colon Carcinoma stained with Lewis A Monoclonal Antibody (SPM522).

Specificity & Comments

Recognizes a carbohydrate determinant of Gal 1-3(Fuc 1-4) GlcNAc which is blood group antigen Lewis A. It is present primarily on epithelial cells such as colon and kidneys. In the tumors and dedifferentiated tissues, decrease of Lewis A antigen was observed. Lewis A (type 1 chain) is expressed in colonic epithelial cells and may be useful for detection of gastrointestinal tumors, pancreatic cancer, and colorectal tumors. Blood group related antigens represent a group of carbohydrate determinants carried on both glycolipids and glycoproteins. They are usually mucin-type, and are detected on erythrocytes, certain epithelial cells, and in secretions of certain individuals. Sixteen genetically and biosynthetically distinct but inter-related specificities belong to this group of antigens, including A, B, H, Lewis A, Lewis B, Lewis X, Lewis Y, and precursor type 1 chain antigens.

Limitations and Warranty

This antibody is available for research use only and is not approved for use in diagnosis. There are no warranties, expressed or implied, which extend beyond this description. Company is not liable for any personal injury or economic loss resulting from this product.

Supplied As

200ug/ml of Ab Purified from Bioreactor Concentrate by Protein A/G. Prepared in 10mM PBS with 0.05% BSA & 0.05% azide. Also available WITHOUT BSA & azide at 1.0mg/ml.

Storage and Stability

Antibody with azide - store at 2 to 8°C. Antibody without azide - store at -20 to -80°C. Antibody is stable for 24 months. Non-hazardous. No MSDS required.
