

Bromodeoxyuridine (BrdU) Antibody

Mouse Monoclonal Antibody [Clone SPM166]

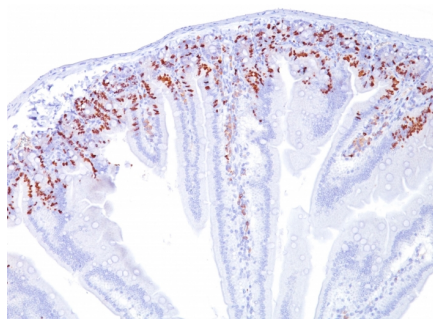
Catalog No	Format	Size
MSM1X-469-P0	Purified Ab with BSA and Azide	200ug/ml
MSM1X-469-P1	Purified Ab with BSA and Azide	200ug/ml
MSM1X-469-P1ABX	Purified Ab WITHOUT BSA and Azide	1.0mg/ml

Applications	Tested Dillution
Flow Cytometry (Flow)	1-2ug/million cells
Immunofluorescence (IF)	1-3ug/ml
Immunohistochemistry (IHC)	1-2ug/ml

Product Details	
Clone	SPM166
Immunogen	Bromodeoxyuridine (BrdU) conjugated to KLH
Host	Mouse
Clonality	Monoclonal
Isotype / Light Chain	IgG1 / Kappa
Mol. Weight of Antigen	307Da
Cellular Localization	N/A
Species Reactivity	All species
Positive Control	Cells grown in presence of BrdU or tissues from experimental animals injected with BrdU.

**Optimal dilution for a specific application should be determined.*

Product Images for Bromodeoxyuridine (BrdU) Antibody



Formalin-fixed, paraffin-embedded Mouse Intestine stained with BrdU Monoclonal Antibody (SPM166).

Specificity & Comments

It reacts with Bromodeoxyuridine (BrdU) in single stranded DNA (produced by partial denaturation of double stranded DNA), BrdU coupled to a protein carrier, as well as free BrdU. BrdU is a thymidine analog, incorporated into cell nuclei during DNA synthesis prior to mitosis. Antibody to BrdU is helpful in detecting S-phase cells, providing useful information on the aggressiveness of tumors.

Known Applications & Suggested Dilutions

Flow Cytometry (1-2ug/million cells) | Immunofluorescence (1-2ug/ml) | Immunohistochemistry (Formalin-fixed) (1-2ug/ml for 30 minutes at RT) (Use Ab at 1ug/ml for 30 minute at RT)[For staining of formalin-fixed tissues, incubate sections in 4N HCl for 30 minutes at RT followed by digestion with trypsin at 1mg/ml PBS, 10 min at 37°C Optimal dilution for a specific application should be determined.

Supplied As

200ug/ml of Ab Purified from Bioreactor Concentrate by Protein A/G. Prepared in 10mM PBS with 0.05% BSA & 0.05% azide. Also available WITHOUT BSA & azide at 1.0mg/ml.

Storage and Stability

Antibody with azide - store at 2 to 8°C. Antibody without azide - store at -20 to -80°C. Antibody is stable for 24 months. Non-hazardous. No MSDS required.

Limitations and Warranty

This antibody is available for research use only and is not approved for use in diagnosis.

There are no warranties, expressed or implied, which extend beyond this description. Company is not liable for any personal injury or economic loss resulting from this product.
