

Golgi Complex (Marker for Human Cells) Antibody

Mouse Monoclonal Antibody [Clone SPM581]

Catalog No	Format	Size
MSM1X-102-P0	Purified Ab with BSA and Azide at 200ug/ml	20 ug
MSM1X-102-P1	Purified Ab with BSA and Azide at 200ug/ml	100 ug
MSM1X-102-P1ABX	Purified Ab WITHOUT BSA at 1.0mg/ml	100 ug

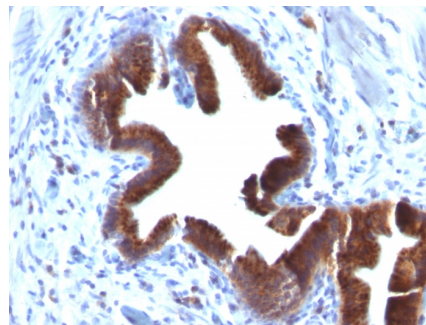
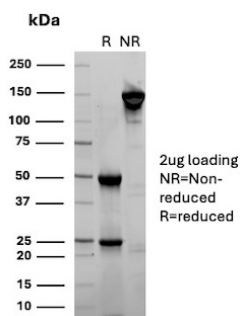
Applications	Tested Dillution	Note
Flow Cytometry (Flow)	1-2ug/million cells	
Immunofluorescence (IF)	1-3ug/ml	
Immunohistochemistry (IHC)	1-2ug/ml	30 min at RT. Staining of formalin-fixed tissues requires heating tissue sections in 10mM Tris with 1mM EDTA, pH 9.0, for 45 min at 95°C followed by cooling at RT for 20 minutes
Western Blot (WB)	2-4ug/ml	

Product Details

Clone	SPM581
Gene Name	N/A
Immunogen	SU-DHL-1 large cell lymphoma cells.
Host	Mouse
Clonality	Monoclonal
Isotype / Light Chain	IgG1 / Kappa
Mol. Weight of Antigen	Not Known
Cellular Localization	N/A
Species Reactivity	Human
Positive Control	tonsil or lymph node.

*Optimal dilution for a specific application should be determined.

Product Images for Golgi Complex (Marker for Human Cells) Antibody



SDS-PAGE Analysis of Purified N/A Mouse Monoclonal Antibody (SPM581). Confirmation of Purity and Integrity of Antibody.

Formalin-fixed, paraffin-embedded human Gallbladder stained with Golgi Monoclonal Antibody (SPM581).

Specificity & Comments

This MAb recognizes Golgi complex in human cells. It is a part of a new panel of reagents, which recognizes subcellular organelles or compartments of human cells. These markers may be useful in identification of these organelles in cells, tissues, and biochemical preparations. It recognizes an antigen associated with the Golgi complex in human cells only. It can be used to stain the Golgi complex in cell or tissue preparations and can be used as a Golgi marker in subcellular fractions. It produces a diffuse staining pattern of the Golgi zone in normal and malignant cells and may be used to stain Golgi complex of cells in frozen tissue sections. It can also be used with paraformaldehyde fixed frozen tissue or cell preparations. This MAb is an excellent marker for human cells in xenographic model research. It reacts specifically with human cells.

Limitations and Warranty

This antibody is available for research use only and is not approved for use in diagnosis. There are no warranties, expressed or implied, which extend beyond this description. Company is not liable for any personal injury or economic loss resulting from this product.

Supplied As

200ug/ml of Ab Purified from Bioreactor Concentrate by Protein A/G. Prepared in 10mM PBS with 0.05% BSA & 0.05% azide. Also available WITHOUT BSA at 1.0mg/ml.

Storage and Stability

Antibody with azide - store at 2 to 8°C. Antibody is stable for 24 months. Non-hazardous. No MSDS required.
