

Helicobacter pylori (Catalase) Antibody

Mouse Monoclonal Antibody [Clone HPYL/7227]

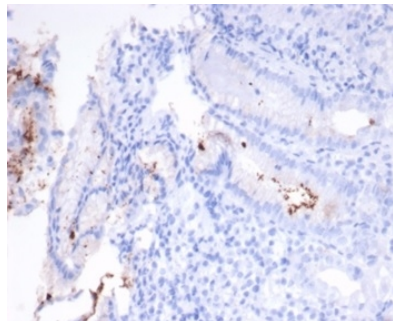
Catalog No	Format	Size
MSM17-7227-P0	Purified Ab with BSA and Azide	200ug/ml
MSM17-7227-P1	Purified Ab with BSA and Azide	200ug/ml
MSM17-7227-P1ABX	Purified Ab WITHOUT BSA	1.0mg/ml

Applications	Tested Dillution
Immunohistochemistry (IHC)	1-2ug/ml

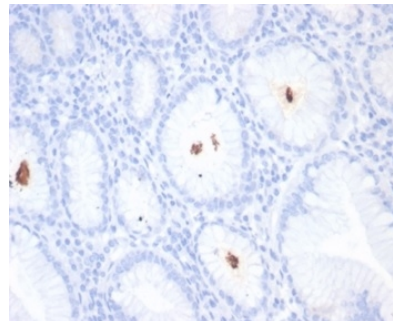
Product Details	
Clone	HPYL/7227
Gene Name	N/A
Immunogen	Recombinant Helicobacter pylori Catalase protein fragment (around aa323-445) (Exact sequence is proprietary)
Host	Mouse
Clonality	Monoclonal
Isotype / Light Chain	IgG2b / Kappa
Mol. Weight of Antigen	58kDa
Cellular Localization	N/A
Species Reactivity	Helicobacter Pylori
Positive Control	Helicobacter pylori infected stomach biopsy

**Optimal dilution for a specific application should be determined.*

Product Images for Helicobacter pylori (Catalase) Antibody



Formalin-fixed, paraffin-embedded H. pylori-infected human stomach stained with Helicobacter pylori (Catalase) Mouse Monoclonal Antibody (HPYL/7227).



Formalin-fixed, paraffin-embedded H. pylori-infected human stomach stained with Helicobacter pylori (Catalase) Mouse Monoclonal Antibody (HPYL/7227).

Specificity & Comments

The spiral shaped bacterium *Helicobacter pylori* is strongly associated with inflammation of the stomach and is also implicated in the development of gastric malignancy. *H. pylori* is known to cause peptic ulcers and chronic gastritis in human. It is associated with duodenal ulcers and may be involved in development of adenocarcinoma and low-grade lymphoma of mucosa associated lymphoid tissue in the stomach. This antibody stains the individual *H. pylori* bacterium when it presents on the surface of the epithelium or in the cytoplasm of the epithelial cells in biopsy tissue sections from the antrum and body of the stomach.

Known Applications & Suggested Dilutions

Immunohistochemistry (Formalin-fixed) (1-2ug/ml for 30 minutes at RT), (Staining of formalin-fixed tissues requires heating tissue sections in 10mM Tris with 1mM EDTA, pH 9.0, for 45 min at 95 °C followed by cooling at RT for 20 minutes), Optimal dilution for a specific application should be determined.

Limitations and Warranty

This antibody is available for research use only and is not approved for use in diagnosis.

There are no warranties, expressed or implied, which extend beyond this description. Company is not liable for any personal injury or economic loss resulting from this product.

Supplied As

200ug/ml of Ab purified from Bioreactor Concentrate by Protein A/G. Prepared in 10mM PBS with 0.05% BSA & 0.05% azide. Also available WITHOUT BSA & azide at 1.0mg/ml.

Storage and Stability

Antibody with azide - store at 2 to 8 °C. Antibody without azide - store at -20 to -80 °C. Antibody is stable for 24 months. Non-hazardous. No MSDS required.