

## Cytokeratin 10/13 Antibody

Mouse Monoclonal Antibody [Clone DE-K13]

Catalog No	Format	Size
MSM11-696-P0	Purified Ab with BSA and Azide at 200ug/ml	20 ug
MSM11-696-P1	Purified Ab with BSA and Azide at 200ug/ml	100 ug
MSM11-696-P1ABX	Purified Ab WITHOUT BSA and Azide at 1.0mg/ml	100 ug

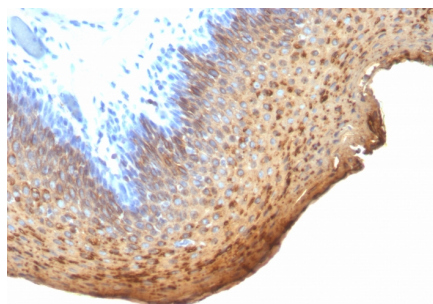
Applications	Tested Dillution	Note
Flow Cytometry (Flow)	1-2ug/million cells	
Immunofluorescence (IF)	1-3ug/ml	
Immunohistochemistry (IHC)	1-2ug/ml	30 min at RT. Staining of formalin-fixed tissues requires heating tissue sections in 10mM Tris with 1mM EDTA, pH 9.0, for 45 min at 95°C followed by cooling at RT for 20 minutes
Western Blot (WB)	2-4ug/ml	

### Product Details

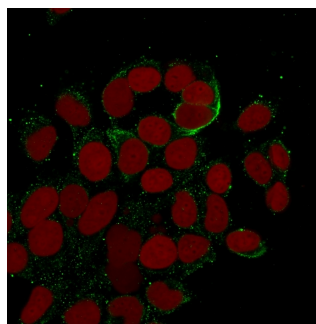
<b>Clone</b>	DE-K13
<b>Gene Name</b>	KRT10
<b>Immunogen</b>	Cytoskeletal preparation extracted from human ectocervical epithelium
<b>Host</b>	Mouse
<b>Clonality</b>	Monoclonal
<b>Isotype / Light Chain</b>	IgG2a / Kappa
<b>Mol. Weight of Antigen</b>	56.5kDa (CK10) & 53kDa (CK13)
<b>Cellular Localization</b>	Cell surface, Extracellular space, Secreted
<b>Species Reactivity</b>	Cat, Human
<b>Positive Control</b>	A431, esophageal or bladder carcinoma., HeLa or MCF7 cells. Human tonsil

\*Optimal dilution for a specific application should be determined.

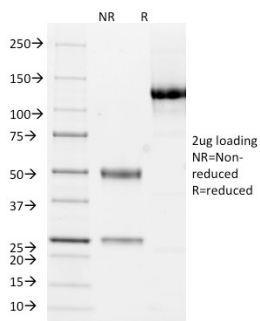
### Product Images for Cytokeratin 10/13 Antibody



Formalin-fixed; paraffin-embedded human tonsil stained with Cytokeratin 10/13 Mouse Monoclonal Antibody (DE-K13).



Immunofluorescent analysis of MeOH-fixed MCF-7 cells using Cytokeratin 10/13 Mouse Monoclonal Antibody (DE-K13) followed by goat anti-mouse IgG-CF488. Nuclei counterstained with RedDot.



SDS-PAGE Analysis of Purified Cytokeratin 10/13 Mouse Monoclonal Antibody (DE-K13). Confirmation of Purity and Integrity of Antibody.

### Specificity & Comments

This antibody recognizes cytokeratin 10 (56.5kDa) and cytokeratin 13 (53kDa) in Western blotting. It recognizes only cytokeratin 13 in formalin-fixed, paraffin-embedded tissue sections. It does not react with cytokeratin 10 positive, cytokeratin 13 negative epithelia such as epidermis. However, on frozen sections this MAb serves as differentiation-related marker of all stratified epithelia; it stains all suprabasal cells in both cornifying and non-cornifying stratified epithelia and more differentiated cells of squamous carcinomas.

### Limitations and Warranty

This antibody is available for research use only and is not approved for use in diagnosis. There are no warranties, expressed or implied, which extend beyond this description. Company is not liable for any personal injury or economic loss resulting from this product.

### Supplied As

200ug/ml of Ab purified from Bioreactor Concentrate by Protein A/G. Prepared in 10mM PBS with 0.05% BSA & 0.05% azide. Also available WITHOUT BSA & azide at 1.0mg/ml.

### Storage and Stability

Antibody with azide - store at 2 to 8 °C. Antibody without azide - store at -20 to -80 °C. Antibody is stable for 24 months. Non-hazardous. No MSDS required.