

KBA.62 (Melanoma Associated Antigen) Antibody

Mouse Monoclonal Antibody [Clone KBA.62]

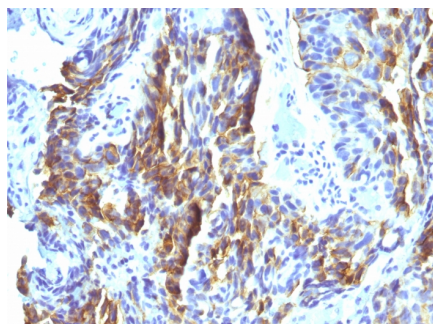
Catalog No	Format	Size
MSM1-895-P0	Purified Ab with BSA and Azide	200ug/ml
MSM1-895-P1	Purified Ab with BSA and Azide	200ug/ml
MSM1-895-P1ABX	Purified Ab WITHOUT BSA and Azide	1.0mg/ml

Applications	Tested Dillution
Immunofluorescence (IF)	1-3ug/ml
Immunohistochemistry (IHC)	1-2ug/ml

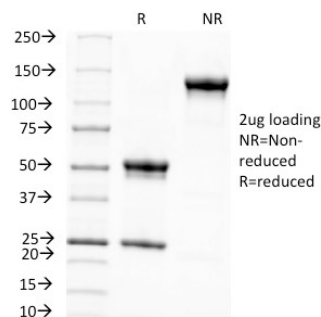
Product Details	
Clone	KBA.62
Gene Name	N/A
Immunogen	Human KAL cells derived from lymph node metastasis of malignant melanoma
Host	Mouse
Clonality	Monoclonal
Isotype / Light Chain	IgG1 / Kappa
Mol. Weight of Antigen	135 and 128kDa and two weak bands of 88 and 73kDa) Multiple (140
Cellular Localization	N/A
Species Reactivity	Human
Positive Control	SK-MEL-13 and SK-MEL-19 melanoma cell lines. Human melanoma tissues.

**Optimal dilution for a specific application should be determined.*

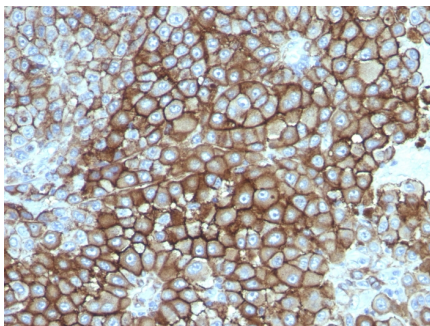
Product Images for KBA.62 (Melanoma Associated Antigen) Antibody



Formalin-fixed, paraffin-embedded human Tongue stained with Melanoma Monoclonal Antibody (KBA.62).



SDS-PAGE Analysis of Purified Melanoma Monoclonal Antibody (KBA.62). Confirmation of Purity and Integrity of Antibody.



Formalin-fixed, paraffin-embedded human Melanoma stained with Melanoma Monoclonal Antibody (KBA.62).

Specificity & Comments

KBA.62 is a novel anti-melanoma antibody. It reacts positively against melanocytic tumors but not other tumors, thus demonstrating specificity and sensitivity. Moreover, it reacts positively against junctional nevus cells but not intradermal nevi, and against fetal melanocytes but not normal adult melanocytes. KBA.62 antibody is useful in identifying malignant melanomas. Metastatic amelanotic melanoma can often be confused with a variety of poorly differentiated carcinomas, large cell lymphomas, sarcomas, spindle cell carcinomas and various types of mesenchymal neoplasms. A keratin-negative, vimentin-rich neoplasm that immuno-reacts with antibody to S100 protein and with KBA.62 antibody is, with rare exception, a melanoma. Anti-KBA.62 is a useful additional marker for melanoma, specifically in desmoplastic/spindle cell cases and in the context of micro-metastasis in sentinel lymph node.

Known Applications & Suggested Dilutions

Immunofluorescence (1-2ug/ml) | Immunohistochemistry (Formalin-fixed) (1-2ug/ml for 30 minutes at RT)(Staining of formalin-fixed tissues requires heating tissue sections in 10mM Tris with 1mM EDTA, pH 9.0, for 45 min at 95°C followed by cooling at RT for 20 minutes) | Optimal dilution for a specific application should be determined.

Limitations and Warranty

This antibody is available for research use only and is not approved for use in diagnosis.

There are no warranties, expressed or implied, which extend beyond this description. Company is not liable for any personal injury or economic loss resulting from this product.

Supplied As

200ug/ml of Ab Purified from Bioreactor Concentrate by Protein A/G. Prepared in 10mM PBS with 0.05% BSA & 0.05% azide. Also available WITHOUT BSA & azide at 1.0mg/ml.

Storage and Stability

Antibody with azide - store at 2 to 8°C. Antibody without azide - store at -20 to -80°C. Antibody is stable for 24 months. Non-hazardous. No MSDS required.