

Melanoma Marker (MART-1 + Tyrosinase + gp100) Antibody

Mouse Monoclonal Antibody [Clone M2-7C10 + M2-9E3 + T311 + HMB45]

Catalog No	Format	Size
MSM1-701-P0	Purified Ab with BSA and Azide at 200ug/ml	20 ug
MSM1-701-P1	Purified Ab with BSA and Azide at 200ug/ml	100 ug
MSM1-701-P1ABX	Purified Ab WITHOUT BSA and Azide at 1.0mg/ml	100 ug

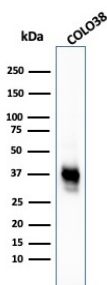
Applications	Tested Dillution	Note
Immunohistochemistry (IHC)	1-2ug/ml	30 min at RT. Staining of formalin-fixed tissues requires heating tissue sections in 10mM Tris with 1mM EDTA, pH 9.0, for 45 min at 95°C followed by cooling at RT for 20 minutes
Western Blot (WB)	2-4ug/ml	

Product Details

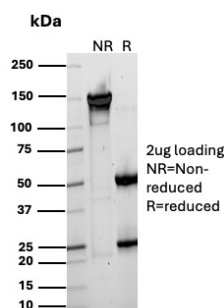
Clone	M2-7C10 + M2-9E3 + T311 + HMB45
Immunogen	Recombinant hMART-1 protein (M2-7C10; M2-9E3); Recombinant tyrosinase protein (T311); Extract of pigmented melanoma metastases from lymph nodes (HMB45)
Host	Mouse
Clonality	Monoclonal
Isotype / Light Chain	IgG1, IgG2a, IgG2b / Kappa, Lambda
Mol. Weight of Antigen	20-22kDa (doublet) (MART); 70-80kDa (Tyrosinase); 26-100kDa (gp100)
Cellular Localization	Endoplasmic reticulum membrane, Golgi apparatus, Melanosome, trans-Golgi network membrane
Species Reactivity	Human
Positive Control	SK-MEL-13 and SK-MEL-19 melanoma cell lines. Human melanoma tissues.

*Optimal dilution for a specific application should be determined.

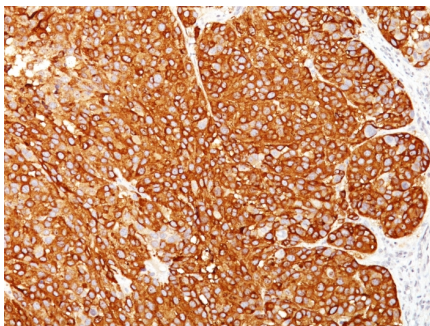
Product Images for Melanoma Marker (MART-1 + Tyrosinase + gp100) Antibody



Western Blot Analysis of COLO38 cell lysate using Melanoma Marker MAb (M2-7C10 + M2-9E3 + T311 + HMB45).



SDS-PAGE Analysis of Purified Melanoma antigen recognized by T-cells 1 Mouse Monoclonal Antibody (M2-7C10 + M2-9E3 + T311 + HMB45). Confirmation of Purity and Integrity of Antibody.



Formalin-fixed, paraffin-embedded human Melanoma stained with Melanoma Marker Monoclonal Antibody (M2-7C10 + M2-9E3 + T311 + HMB45).

Specificity & Comments

This antibody cocktail recognizes three melanoma-specific proteins, which include MART-1, Tyrosinase and gp100. MART-1 is a newly identified melanocyte differentiation antigen recognized by autologous cytotoxic T lymphocytes. Tyrosinase is one of the targets for cytotoxic T-cell recognition in melanoma patients. Function of gp100 is not known but it is reported to be a useful marker for melanocytes and melanomas. This cocktail of three markers is designed for extremely sensitive labeling of formalin-fixed, paraffin-embedded melanomas and other tumors showing melanocytic differentiation.

Supplied As

200ug/ml of Ab Purified from Bioreactor Concentrate by Protein A/G. Prepared in 10mM PBS with 0.05% BSA & 0.05% azide. Also available WITHOUT BSA & azide at 1.0mg/ml.

Storage and Stability

Antibody with azide - store at 2 to 8°C. Antibody without azide - store at -20 to -80°C. Antibody is stable for 24 months. Non-hazardous. No MSDS required.

Limitations and Warranty

This antibody is available for research use only and is not approved for use in diagnosis. There are no warranties, expressed or implied, which extend beyond this description. Company is not liable for any personal injury or economic loss resulting from this product.