

Human Immunodeficiency Virus Type-1 p24 (HIV1-p24) Antibody

Mouse Monoclonal Antibody [Clone HIV1-24/661]

Catalog No	Format	Size
MSM1-661-P0	Purified Ab with BSA and Azide at 200ug/ml	20 ug
MSM1-661-P1	Purified Ab with BSA and Azide at 200ug/ml	100 ug
MSM1-661-P1ABX	Purified Ab WITHOUT BSA at 1.0mg/ml	100 ug

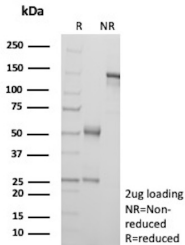
Applications	Tested Dillution	Note
Immunofluorescence (IF)	1-3ug/ml	

Product Details

Clone	HIV1-24/661
Immunogen	Recombinant HIV-1 Gag p24 protein
Host	Mouse
Clonality	Monoclonal
Isotype / Light Chain	IgG1 / Kappa
Mol. Weight of Antigen	24kDa (mature); 55kDa & 41kDa (precursors)
Cellular Localization	Host cell membrane, Host cytoplasm, Host endosome, Host multivesicular body, Host nucleus, Membrane, Virion, Virion membrane
Species Reactivity	HIV Type 1
Positive Control	HIV-1 infected cells. Tissues.

*Optimal dilution for a specific application should be determined.

Product Images for Human Immunodeficiency Virus Type-1 p24 (HIV1-p24) Antibody



SDS-PAGE Analysis of Purified Gag-Pol polyprotein Mouse Monoclonal Antibody (HIV1-24/661). Confirmation of Purity and Integrity of Antibody.

Specificity & Comments

Human immunodeficiency virus (HIV) is a retrovirus that causes acquired immune deficiency syndrome (AIDS), a condition in humans in which the immune system begins to fail, leading to life-threatening opportunistic infections. HIV mainly infects vital cells in the human immune system such as helper T cells (specifically CD4+ T cells), macrophages and dendritic cells. Two species of HIV infect humans: HIV-1 and HIV-2, with HIV-1 being the more virulent strain. The gag gene of human immunodeficiency virus 1 (HIV-1) encodes a precursor protein known as Pr55Gag. The viral protease PR cleaves this precursor to generate p17, p24, p7, and p6 proteins, which are required for virus particle assembly. HIV-1 Gag p24 is a capsid protein that constitutes the core of AIDS virus HIV-1. p6 and p7 are the components of the nucleocapsid, and p17 provides a protective matrix. HIV-1 Gag p24 is indispensable to the reproduction of AIDS virus and constitutes an essential element for the AIDS virus particle construction. As this protein is detectable from the early stage of AIDS virus infection, its measurement is commonly used as an indicator of HIV-1 infection and viral load.

Supplied As

200ug/ml of Ab Purified from Bioreactor Concentrate by Protein A/G. Prepared in 10mM PBS with 0.05% BSA & 0.05% azide. Also available WITHOUT BSA at 1.0mg/ml.

Storage and Stability

Antibody with azide - store at 2 to 8°C. Antibody is stable for 24 months. Non-hazardous. No MSDS required.

Limitations and Warranty

This antibody is available for research use only and is not approved for use in diagnosis. There are no warranties, expressed or implied, which extend beyond this description. Company is not liable for any personal injury or economic loss resulting from this product.
