

## Plasma Cell Marker Antibody

Mouse Monoclonal Antibody [Clone LIV3G11; same as 7B18]

Catalog No	Format	Size
MSM1-47-P0	Purified Ab with BSA and Azide at 200ug/ml	20 ug
MSM1-47-P1	Purified Ab with BSA and Azide at 200ug/ml	100 ug
MSM1-47-P1ABX	Purified Ab WITHOUT BSA and Azide at 1.0mg/ml	100 ug

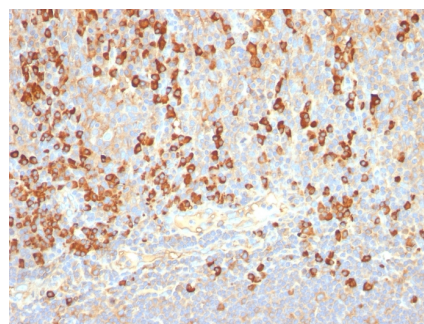
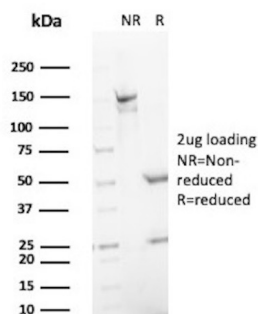
Applications	Tested Dillution	Note
Immunohistochemistry (IHC)	1-2ug/ml	30 min at RT. Staining of formalin-fixed tissues requires heating tissue sections in 10mM Tris with 1mM EDTA, pH 9.0, for 45 min at 95°C followed by cooling at RT for 20 minutes

### Product Details

Clone	LIV3G11; same as 7B18
Immunogen	Pancreatic cancer-related mucin
Host	Mouse
Clonality	Monoclonal
Isotype / Light Chain	IgG2a / Kappa
Mol. Weight of Antigen	Not Known
Cellular Localization	N/A
Species Reactivity	Human
Positive Control	tonsil or lymph node.

\*Optimal dilution for a specific application should be determined.

### Product Images for Plasma Cell Marker Antibody



SDS-PAGE Analysis of Purified Plasma-Cells Mouse Monoclonal Antibody(LIV3G11). Confirmation of Purity and Integrity of Antibody.

Formalin-fixed, paraffin-embedded human Tonsil stained with Plasma Cell Marker Monoclonal Antibody (LIV3G11).

### **Specificity & Comments**

It recognizes an intra-cytoplasmic antigen, which shows a very high degree of specificity for plasma cells. This antigen is present in normal as well as neoplastic plasma cells. Plasma cells, which are large lymphocytes derived from an antigen-specific B cell, secrete antibodies and are responsible for humoral immunity. Plasma cells differentiate from B cells upon stimulation by CD4+ lymphocytes. The B cell acts as an antigen-presenting cell (APC), consuming an offending pathogen, which is taken up by the B cell by phagocytosis and broken down within proteosomes. Plasma cells contain basophilic cytoplasm; their nucleus contains heterochromatin organized in a characteristic cartwheel arrangement. This MAb superbly recognizes normal and neoplastic plasma cells in routine formalin-fixed, paraffin-embedded tissue sections. It is of potential value in identifying myeloma or plasmacytoma in bone marrow or other tissues. It also helps differentiate lympho-plasmacytoid lymphoma from lymphocytic and follicular lymphoma. Note that this MAb is not suitable for staining frozen tissues.

---

### **Limitations and Warranty**

This antibody is available for research use only and is not approved for use in diagnosis. There are no warranties, expressed or implied, which extend beyond this description. Company is not liable for any personal injury or economic loss resulting from this product.

---

### **Supplied As**

200ug/ml of Ab Purified from Bioreactor Concentrate by Protein A/G. Prepared in 10mM PBS with 0.05% BSA & 0.05% azide. Also available WITHOUT BSA & azide at 1.0mg/ml.

---

### **Storage and Stability**

Antibody with azide - store at 2 to 8°C. Antibody without azide - store at -20 to -80°C. Antibody is stable for 24 months. Non-hazardous. No MSDS required.

---