

Bromodeoxyuridine (BrdU) (Proliferation Marker) Antibody

Mouse Monoclonal Antibody [Clone BRD469]

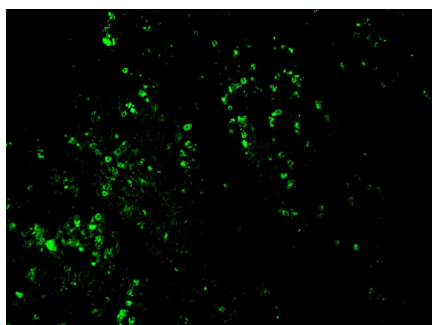
| Catalog No | Format | Size |
|---------------------|-----------------------------------|-------------|
| MSM1-469-CF488-100T | Purified Ab conjug | ed to CF488 |
| MSM1-469-P0 | Purified Ab with BSA and Azide | 200ug/ml |
| MSM1-469-P1 | Purified Ab with BSA and Azide | 200ug/ml |
| MSM1-469-P1ABX | Purified Ab WITHOUT BSA and Azide | 1.0mg/ml |

| Applications | Tested Dillution |
|----------------------------|---------------------|
| Flow Cytometry (Flow) | 1-2ug/million cells |
| Immunofluorescence (IF) | 1-3ug/ml |
| Immunohistochemistry (IHC) | 1-2ug/ml |

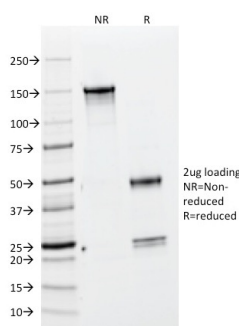
| Product Details | |
|------------------------|--|
| Clone | BRD469 |
| Immunogen | Bromodeoxyuridine (BrdU) conjugated to KLH |
| Host | Mouse |
| Clonality | Monoclonal |
| Isotype / Light Chain | IgG1 |
| Mol. Weight of Antigen | 307Da |
| Cellular Localization | Nucleus |
| Species Reactivity | All species |
| Positive Control | Cells grown in presence of BrdU or tissues from experimental animals injected with BrdU. |

**Optimal dilution for a specific application should be determined.*

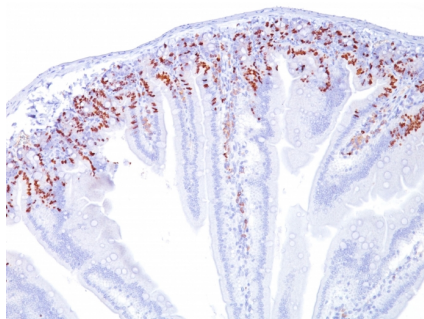
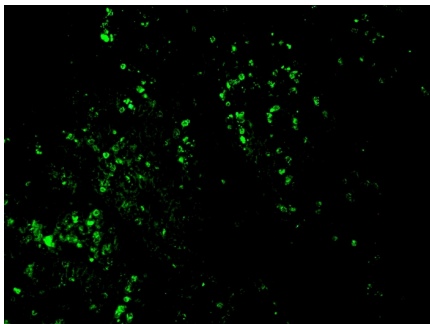
Product Images for Bromodeoxyuridine (BrdU) (Proliferation Marker) Antibody



Formalin-fixed, paraffin-embedded Rat Kidney stained with AF488-conjugated BrdU Mouse Monoclonal Antibody (BRD469).



SDS-PAGE Analysis Purified BrdU Mouse Monoclonal Antibody (BRD469).



Formalin-fixed, paraffin-embedded Mouse Small Intestine stained with BrdU Mouse Monoclonal Antibody (BRD469).

Specificity & Comments

It reacts with Bromodeoxyuridine (BrdU) in single stranded DNA (produced by partial denaturation of double stranded DNA), BrdU coupled to a protein carrier, as well as free BrdU. BrdU is a thymidine analog, incorporated into cell nuclei during DNA synthesis prior to mitosis. Antibody to BrdU is helpful in detecting S-phase cells, providing useful information on the aggressiveness of tumors.

Known Applications & Suggested Dilutions

Immunohistochemistry (Formalin-fixed) (1-2ug/ml for 30 minutes at RT) (Use Ab at 1ug/ml for 30 minute at RT)[For staining of formalin-fixed tissues, incubate sections in 4N HCl for 30 minutes at RT followed by digestion with trypsin at 1mg/ml PBS, 10 min at 37oC (Cat. #AP-9008)]Optimal dilution for a specific application should be determined.

Limitations and Warranty

This antibody is available for research use only and is not approved for use in diagnosis.

There are no warranties, expressed or implied, which extend beyond this description. Company is not liable for any personal injury or economic loss resulting from this product.

Supplied As

200ug/ml of Ab Purified from Bioreactor Concentrate by Protein A/G. Prepared in 10mM PBS with 0.05% BSA & 0.05% azide. Also available WITHOUT BSA & azide at 1.0mg/ml.

Storage and Stability

Antibody with azide - store at 2 to 8°C. Antibody without azide - store at -20 to -80°C. Antibody is stable for 24 months. Non-hazardous. No MSDS required.