

Cytokeratin, Multi (Epithelial Marker) Antibody

Mouse Monoclonal Antibody [Clone C11]

Catalog No	Format	Size
MSM1-393-P0	Purified Ab with BSA and Azide at 200ug/ml	20 ug
MSM1-393-P1	Purified Ab with BSA and Azide at 200ug/ml	100 ug
MSM1-393-P1ABX	Purified Ab WITHOUT BSA and Azide at 1.0mg/ml	100 ug

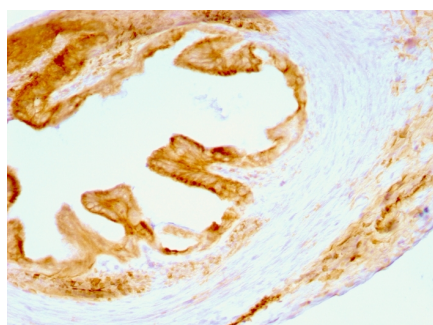
Applications	Tested Dillution	Note
Flow Cytometry (Flow)	1-2ug/million cells	
Immunofluorescence (IF)	1-3ug/ml	
Immunohistochemistry (IHC)	1-2ug/ml	30 min at RT. Staining of formalin-fixed tissues requires heating tissue sections in 10mM Tris with 1mM EDTA, pH 9.0, for 45 min at 95°C followed by cooling at RT for 20 minutes
Western Blot (WB)	2-4ug/ml	

Product Details

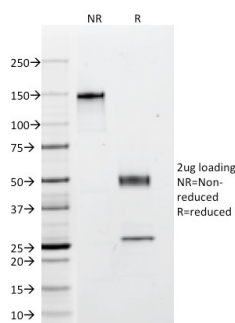
Clone	C11
Gene Name	KRT4
Immunogen	Keratin-enriched preparation from cultured human A431
Host	Mouse
Clonality	Monoclonal
Isotype / Light Chain	IgG1 / Kappa
Mol. Weight of Antigen	Multiple
Species Reactivity	Cow, Frog, Goat, Guinea Pig, Human, Marmoset, Mouse, Pig, Rat
Positive Control	HeLa or A431 cells. Skin or colon carcinoma.

*Optimal dilution for a specific application should be determined.

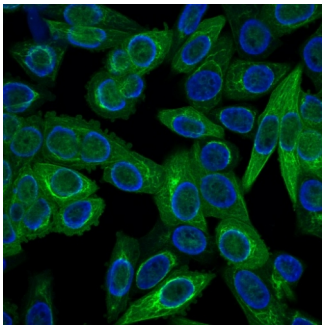
Product Images for Cytokeratin, Multi (Epithelial Marker) Antibody



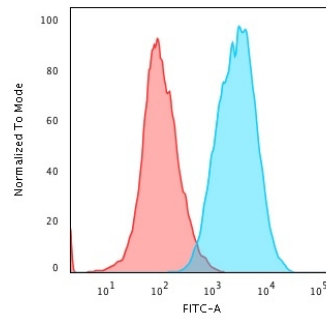
Formalin-fixed, paraffin-embedded Rat Oviduct stained with Multi Cytokeratin Mouse Monoclonal Antibody (C11).



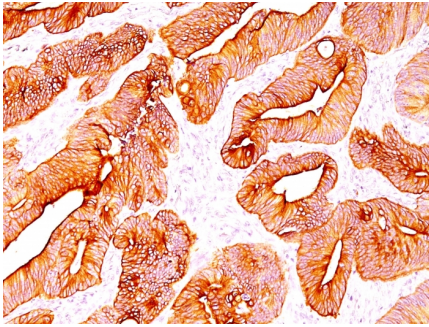
SDS-PAGE Analysis of Purified Multi Cytokeratin Mouse Monoclonal Antibody (C11).



Immunofluorescence Analysis of HeLa cells labeling Multi Cytokeratin with Multi Cytokeratin Mouse Monoclonal Antibody (C11) conjugated with CF640R(Green). The nuclear counterstain is DAPI (Blue)



Flow Cytometric Analysis of Human HeLa cells using Multi Cytokeratin Mouse Monoclonal Antibody (C11) followed by Goat anti-Mouse IgG-CF488 (Blue); Isotype control (Red).



Formalin-fixed, paraffin-embedded human Colon Carcinoma stained with Multi Cytokeratin Mouse Monoclonal Antibody (C11).

Specificity & Comments

This MAb recognizes cytokeratin 4, 5, 6, 8, 10, 13, and 18. This is a broad-spectrum antibody, which has been reported to differentiate epithelial tumors from non-epithelial tumors. Many studies have shown the usefulness of keratins as markers in cancer research and tumor diagnosis.

Supplied As

200ug/ml of Ab Purified from Bioreactor Concentrate by Protein A/G. Prepared in 10mM PBS with 0.05% BSA & 0.05% azide. Also available WITHOUT BSA & azide at 1.0mg/ml.

Storage and Stability

Antibody with azide - store at 2 to 8°C. Antibody without azide - store at -20 to -80°C. Antibody is stable for 24 months. Non-hazardous. No MSDS required.

Limitations and Warranty

This antibody is available for research use only and is not approved for use in diagnosis. There are no warranties, expressed or implied, which extend beyond this description. Company is not liable for any personal injury or economic loss resulting from this product.