

Phosphotyrosine (P-Tyr) Antibody

Mouse Monoclonal Antibody [Clone PY20]

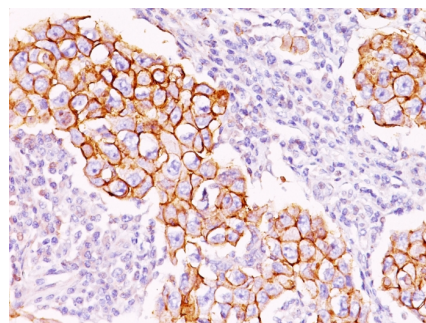
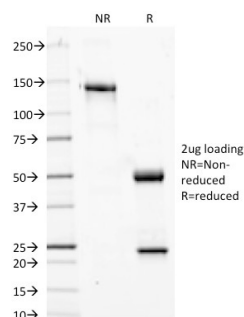
Catalog No	Format	Size
MSM1-232-P0	Purified Ab with BSA and Azide	200ug/ml
MSM1-232-P1	Purified Ab with BSA and Azide	200ug/ml
MSM1-232-P1ABX	Purified Ab WITHOUT BSA and Azide	1.0mg/ml

Applications	Tested Dillution
Flow Cytometry (Flow)	1-2ug/million cells
Immunofluorescence (IF)	1-3ug/ml
Western Blot (WB)	2-4ug/ml

Product Details	
Clone	PY20
Immunogen	Phosphotyrosine conjugated to KLH
Host	Mouse
Clonality	Monoclonal
Isotype / Light Chain	IgG2b
Mol. Weight of Antigen	Depends upon the phosphorylated target
Cellular Localization	N/A
Species Reactivity	All species
Positive Control	MCF-7, MDA-231, T47-D cells or breast carcinoma

**Optimal dilution for a specific application should be determined.*

Product Images for Phosphotyrosine (P-Tyr) Antibody



SDS-PAGE Analysis of Purified Phosphotyrosine Mouse Monoclonal Antibody (PY20). Confirmation of Purity and Integrity of Antibody.

Formalin-fixed, paraffin-embedded human Breast Carcinoma stained with Phosphotyrosine Mouse Monoclonal Antibody (PY20).

Specificity & Comments

Protein phosphorylation is a fundamental event in the regulation of a large number of intracellular processes. Phosphorylation of specific tyrosine residues is the result of activation or stimulation of their respective protein tyrosine kinases. The phosphorylated proteins can be auto-phosphorylated kinases or certain cellular protein substrates. Tyrosine-phosphorylated proteins are involved in signal transduction and in the regulation of cell proliferation. Antibody to phosphotyrosine provides an excellent tool for the detection, characterization, and purification of phosphotyrosine containing proteins. This MAb shows no cross-reaction with other phosphoamino acids and is superb for multiple applications including staining of formalin/paraffin tissues.

Known Applications & Suggested Dilutions

Flow Cytometry (0.5-1ug/million cells) | Immunofluorescence (1-2ug/ml) | Western Blotting (0.5-1ug/ml) | Immunoprecipitation (1-2ug/500ug protein lysate) | Immunohistology (Formalin-fixed) (1-2ug/ml for 30 minutes at RT) (No pretreatment is required for staining of formalin-fixed, paraffin-embedded tissues) Optimal dilution for a specific application should be determined.

Limitations and Warranty

This antibody is available for research use only and is not approved for use in diagnosis.

There are no warranties, expressed or implied, which extend beyond this description. Company is not liable for any personal injury or economic loss resulting from this product.

Supplied As

200ug/ml of Ab purified from Bioreactor Concentrate by Protein A/G. Prepared in 10mM PBS with 0.05% BSA & 0.05% azide. Also available WITHOUT BSA & azide at 1.0mg/ml.

Storage and Stability

Antibody with azide - store at 2 to 8 °C. Antibody without azide - store at -20 to -80 °C. Antibody is stable for 24 months. Non-hazardous. No MSDS required.
