

Melanoma Associated Antigen (MAA) Antibody

Mouse Monoclonal Antibody [Clone MAA/1414]

Catalog No	Format	Size
MSM1-1414-P0	Purified Ab with BSA and Azide at 200ug/ml	20 ug
MSM1-1414-P1	Purified Ab with BSA and Azide at 200ug/ml	100 ug
MSM1-1414-P1ABX	Purified Ab WITHOUT BSA and Azide at 1.0mg/ml	100 ug

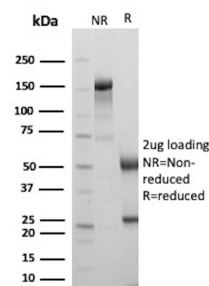
Applications	Tested Dillution	Note
--------------	------------------	------

Product Details

Clone	MAA/1414
Gene Name	N/A
Immunogen	proteins extracted from a melanoma
Host	Mouse
Clonality	Monoclonal
Isotype / Light Chain	IgG2b / Kappa
Mol. Weight of Antigen	Not Known
Cellular Localization	N/A
Species Reactivity	Human
Positive Control	Melanoma.

*Optimal dilution for a specific application should be determined.

Product Images for Melanoma Associated Antigen (MAA) Antibody



SDS-PAGE Analysis of Purified Melanoma Associated Antigen Mouse Monoclonal Antibody (MAA/1414). Confirmation of Purity and Integrity of Antibody.

Specificity & Comments

The antibody reacts strongly with melanoma cells derived from cell lines and short-term cultures and reacts preferentially with melanoma cells in frozen tissue sections. The antibody can also be used to detect melanoma lesions in vivo.

Supplied As

200ug/ml of Ab Purified from Bioreactor Concentrate by Protein A/G. Prepared in 10mM PBS with 0.05% BSA & 0.05% azide. Also available WITHOUT BSA & azide at 1.0mg/ml.

Storage and Stability

Antibody with azide - store at 2 to 8°C. Antibody without azide - store at -20 to -80°C. Antibody is stable for 24 months. Non-hazardous. No MSDS required.

Limitations and Warranty

This antibody is available for research use only and is not approved for use in diagnosis. There are no warranties, expressed or implied, which extend beyond this description. Company is not liable for any personal injury or economic loss resulting from this product.