

Erythrocyte Specific Antibody

Mouse Monoclonal Antibody [Clone SFL23.6]

Catalog No	Format	Size
MSM1-105-P0	Purified Ab with BSA and Azide at 200ug/ml	20 ug
MSM1-105-P1	Purified Ab with BSA and Azide at 200ug/ml	100 ug
MSM1-105-P1ABX	Purified Ab WITHOUT BSA and Azide at 1.0mg/ml	100 ug

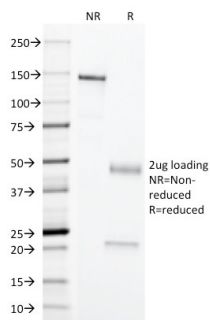
Applications	Tested Dillution	Note
Flow Cytometry (Flow)	1-2ug/million cells	
Immunofluorescence (IF)	1-3ug/ml	

Product Details

Clone	SFL23.6
Gene Name	N/A
Immunogen	Hepatocytes from a 20-22 week-old human fetus
Host	Mouse
Clonality	Monoclonal
Isotype / Light Chain	IgG2b / Kappa
Mol. Weight of Antigen	Not Known
Cellular Localization	N/A
Species Reactivity	Human
Positive Control	RBC. Placenta.

*Optimal dilution for a specific application should be determined.

Product Images for Erythrocyte Specific Antibody



SDS-PAGE Analysis of Purified Erythrocyte Specific Mouse Monoclonal Antibody (SFL23.6). Confirmation of Purity and Integrity of Antibody.

Specificity & Comments

Mouse Anti-Human Erythrocytes Clone SFL23.6 MAb is directed against an erythroid cell surface antigen. It shows a well-defined reactivity with cells of the erythroid lineage at all stages of maturation in the peripheral blood, bone marrow, and fetal liver. Non-erythroid lineages are negative by flow cytometry. Although the exact identity of the antigen has yet to be determined, it has been shown to be distinct from Glycophorin A. This MAb is useful in the diagnosis of erythroleukemia, identification of bone marrow erythroid precursors, gating erythroid nucleated precursor cells from malignant cells in bone marrow specimens.

Limitations and Warranty

This antibody is available for research use only and is not approved for use in diagnosis. There are no warranties, expressed or implied, which extend beyond this description. Company is not liable for any personal injury or economic loss resulting from this product.

Supplied As

200ug/ml of Ab Purified from Bioreactor Concentrate by Protein A/G. Prepared in 10mM PBS with 0.05% BSA & 0.05% azide. Also available WITHOUT BSA & azide at 1.0mg/ml.

Storage and Stability

Antibody with azide - store at 2 to 8°C. Antibody without azide - store at -20 to -80°C. Antibody is stable for 24 months. Non-hazardous. No MSDS required.