

## Recombinant E-Cadherin (CDH1) / CD324 (Intercellular Junction Marker) Antibody

Rabbit Monoclonal Antibody [Clone CDH1/2208R]

Catalog No	Format	Size
999-RBM8-P0	Purified Ab with BSA and Azide at 200ug/ml	20 ug
999-RBM8-P1	Purified Ab with BSA and Azide at 200ug/ml	100 ug
999-RBM8-P1ABX	Purified Ab WITHOUT BSA and Azide at 1.0mg/ml	100 ug

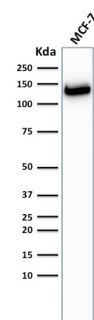
Applications	Tested Dillution	Note
Flow Cytometry (Flow)	1-2ug/million cells	
Immunofluorescence (IF)	1-3ug/ml	
Immunohistochemistry (IHC)	1-2ug/ml	30 min at RT. Staining of formalin-fixed tissues requires heating tissue sections in 10mM Tris with 1mM EDTA, pH 9.0, for 45 min at 95°C followed by cooling at RT for 20 minutes
Western Blot (WB)	2-4ug/ml	

### Product Details

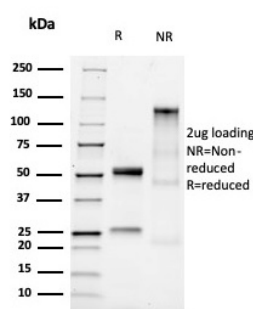
<b>Clone</b>	CDH1/2208R
<b>Gene Name</b>	CDH1
<b>Immunogen</b>	Recombinant fragment (around aa600-800) of human E-Cadherin protein (exact sequence is proprietary)
<b>Host</b>	Rabbit
<b>Clonality</b>	Monoclonal
<b>Isotype / Light Chain</b>	IgG / Kappa
<b>Mol. Weight of Antigen</b>	120-80kDa (Mature); 135kDa (Precursor)
<b>Cellular Localization</b>	Adherens junction, Cell junction, Cell membrane, Endosome, Golgi apparatus, trans-Golgi network
<b>Species Reactivity</b>	Human, Mouse
<b>Positive Control</b>	MCF-7 or SK-BR3 cells. Human placenta, prostate or colon carcinomas, Human Skin

\*Optimal dilution for a specific application should be determined.

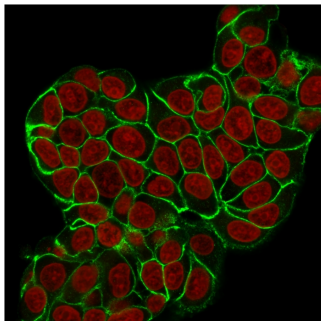
### Product Images for Recombinant E-Cadherin (CDH1) / CD324 (Intercellular Junction Marker) Antibody



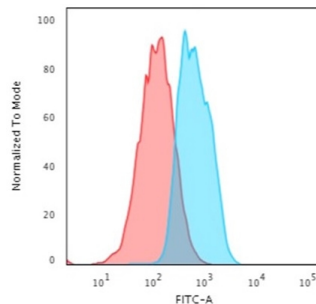
Western Blot Analysis of MCF-7 cell lysate using E-Cadherin Rabbit Recombinant Monoclonal Antibody (CDH1/2208R).



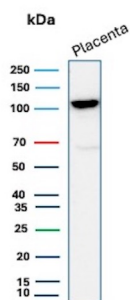
SDS-PAGE Analysis Purified E-Cadherin Rabbit Recombinant Monoclonal Antibody (CDH1/2208R). Confirmation of Purity and Integrity of Antibody.



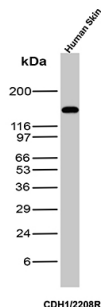
Immunofluorescence Analysis of MCF-7 cells labeling E-Cadherin with E-Cadherin Rabbit Recombinant Monoclonal Antibody (CDH1/2208R) followed by goat anti-mouse IgG-CF488. The nuclear counterstain is RedDot.



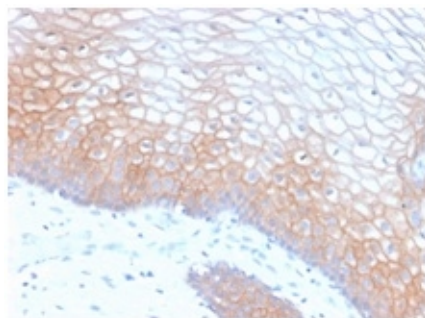
Flow Cytometric Analysis of MCF-7 cells using E-Cadherin Rabbit Recombinant Monoclonal Antibody (CDH1/2208R) followed by goat anti-mouse IgG-CF488 (blue); isotype control (red).



Western Blot Analysis of human placenta tissue lysate using E-Cadherin Recombinant Rabbit Monoclonal Antibody (CDH1/2208R).



Western Blot Analysis of Human Skin tissue lysate using E-Cadherin Recombinant Rabbit Monoclonal Antibody (CDH1/2208R).



Formalin-fixed, paraffin-embedded human cervix stained with E-Cadherin Rabbit Recombinant Monoclonal Antibody (CDH1/2208R).

## Specificity & Comments

Recognizes a protein of 120-80kDa, identified as E-cadherin. Cadherins comprise a family of Ca<sup>2+</sup>-dependent adhesion molecules that function to mediate cell-cell binding critical to the maintenance of tissue structure and morphogenesis. The classical cadherins, E-, N- and P-cadherin, consist of large extracellular domains characterized by a series of five homologous NH<sub>2</sub> terminal repeats. The relatively short intracellular domains interact with a variety of cytoplasmic proteins, such as  $\beta$ -catenin, to regulate cadherin function. E-cadherin plays an important role in epithelial cell adhesion. A decreased expression of E-cadherin is associated with metastatic potential and poor prognosis in breast cancer, prostate and esophageal cancer. In combination with p120 Catenin, it is useful for the differentiation between ductal (E-cadherin +) and lobular (E-cadherin -) breast carcinomas. It may also help in diagnosis of mesothelioma.

## Limitations and Warranty

This antibody is available for research use only and is not approved for use in diagnosis. There are no warranties, expressed or implied, which extend beyond this description. Company is not liable for any personal injury or economic loss resulting from this product.

2 Union Square, Union City, CA 94587; Tel: 1-866-2-NEOBIO (1-866-263-6246)  
orders@NeoBiotechnologies.com, www.NeoBiotechnologies.com

## Supplied As

200ug/ml of Ab purified from Bioreactor Concentrate by Protein A/G. Prepared in 10mM PBS with 0.05% BSA & 0.05% azide. Also available WITHOUT BSA & azide at 1.0mg/ml.

## Storage and Stability

Antibody with azide - store at 2 to 8 °C. Antibody without azide - store at -20 to -80 °C. Antibody is stable for 24 months. Non-hazardous. No MSDS required.

## Research Areas

Cardiovascular, Developmental Biology, Immunology, Bladder Cancer, Colon Cancer, Infectious Disease, Signal Transduction