

## Major Vault Protein (MVP) Antibody

Mouse Monoclonal Antibody [Clone 1014]

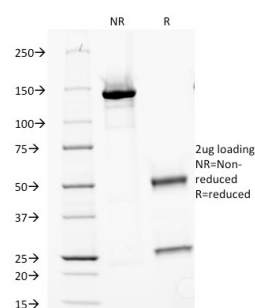
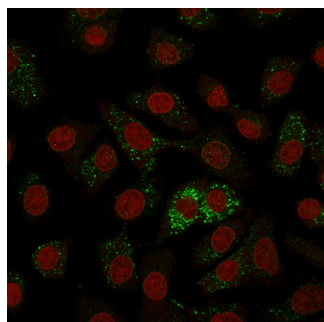
Catalog No	Format	Size
9961-MSM1-P0	Purified Ab with BSA and Azide	200ug/ml
9961-MSM1-P1	Purified Ab with BSA and Azide	200ug/ml
9961-MSM1-P1ABX	Purified Ab WITHOUT BSA and Azide	1.0mg/ml

Applications	Tested Dillution
Flow Cytometry (Flow)	1-2ug/million cells
Immunofluorescence (IF)	1-3ug/ml

Product Details	
Clone	1014
Gene Name	MVP
Immunogen	proteins precipitated from human breast cancer MCF-7 cells
Host	Mouse
Clonality	Monoclonal
Isotype / Light Chain	IgG1 / Kappa
Mol. Weight of Antigen	104-110kDa
Cellular Localization	Cytoplasm, Nuclear pore complex, Nucleus, Perinuclear region
Species Reactivity	Human
Positive Control	MCF-7 or HeLa cells. Breast tumors.

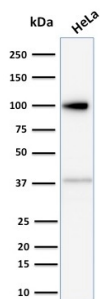
*\*Optimal dilution for a specific application should be determined.*

### Product Images for Major Vault Protein (MVP) Antibody



Immunofluorescence Analysis of A549 cells labeling MVP with MVP Monoclonal Antibody (Clone 1014) followed by Goat anti-Mouse IgG-CF488 (Green). The nuclear counterstain is Reddot (Red).

SDS-PAGE Analysis of Purified MVP Monoclonal Antibody (Clone 1014). Confirmation of Purity and Integrity of Antibody.



Western Blot Analysis of human HeLa cell lysate using Major Vault Protein (MVP) Mouse Monoclonal Antibody (Clone 1014).

### Specificity & Comments

Recognizes a protein of 104kDa-110kDa, characterized as major vault protein (MVP). Vaults are large ribonucleoprotein particles (RNPs) present in all eukaryotic cells. They have a complex morphology, including several small molecules of RNA, but a single protein species. The MVP accounts for 70% of their mass. Their shape is reminiscent of the nucleopore central plug. Treatment of cells with estradiol increases the amount of MVP in nuclear extract. The hormone-dependent interaction of vaults with ER is prevented in vitro by sodium molybdate. Antibodies to estrogen, progesterone and glucocorticoid receptors are able to co-immunoprecipitate the MVP. MVP is overexpressed in many neoplastic tissues and cell lines. Expression of MVP predicts a poor response to chemotherapy.

### Research Areas

Immunology

### Known Applications & Suggested Dilutions

Flow Cytometry (1-2ug/million cells) | Immunofluorescence (1-2ug/ml) | Optimal dilution for a specific application should be determined.

### Limitations and Warranty

This antibody is available for research use only and is not approved for use in diagnosis.

There are no warranties, expressed or implied, which extend beyond this description. Company is not liable for any personal injury or economic loss resulting from this product.

### Supplied As

200ug/ml of Ab Purified from Bioreactor Concentrate by Protein A/G. Prepared in 10mM PBS with 0.05% BSA & 0.05% azide. Also available WITHOUT BSA & azide at 1.0mg/ml.

### Storage and Stability

Antibody with azide - store at 2 to 8°C. Antibody without azide - store at -20 to -80°C. Antibody is stable for 24 months. Non-hazardous. No MSDS required.