

## CD151 Antibody

Mouse Monoclonal Antibody [Clone 11G5a]

Catalog No	Format	Size
977-MSM1-P0	Purified Ab with BSA and Azide at 200ug/ml	20 ug
977-MSM1-P1	Purified Ab with BSA and Azide at 200ug/ml	100 ug
977-MSM1-P1ABX	Purified Ab WITHOUT BSA and Azide at 1.0mg/ml	100 ug

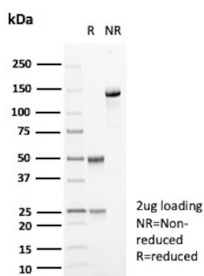
Applications	Tested Dillution	Note
Flow Cytometry (Flow)	1-2ug/million cells	
Immunofluorescence (IF)	1-3ug/ml	
Immunohistochemistry (IHC)	1-2ug/ml	30 min at RT. Staining of formalin-fixed tissues requires heating tissue sections in 10mM Tris with 1mM EDTA, pH 9.0, for 45 min at 95°C followed by cooling at RT for 20 minutes
Western Blot (WB)	2-4ug/ml	

### Product Details

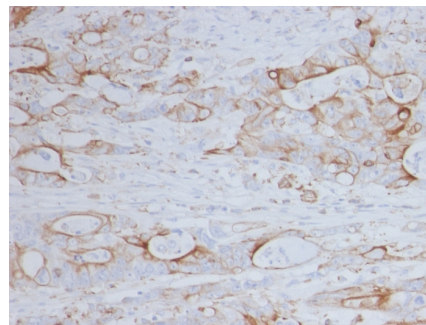
<b>Clone</b>	11G5a
<b>Gene Name</b>	CD151
<b>Immunogen</b>	The details of the immunogen for this antibody are not available.
<b>Host</b>	Mouse
<b>Clonality</b>	Monoclonal
<b>Isotype / Light Chain</b>	IgG1 / Kappa
<b>Mol. Weight of Antigen</b>	28-32kDa
<b>Cellular Localization</b>	Membrane
<b>Species Reactivity</b>	Human
<b>Positive Control</b>	Human tonsil or spleen. HT1080 cells.

\*Optimal dilution for a specific application should be determined.

### Product Images for CD151 Antibody



SDS-PAGE Analysis of Purified CD151 Mouse Monoclonal Antibody (11G5a). Confirmation of Purity and Integrity of Antibody.



Formalin-fixed, paraffin-embedded human colon stained with CD151 Mouse Monoclonal Antibody (11G5a).

### Specificity & Comments

CD151 is involved in a wide variety of cell biological processes, including cell adhesion and the transport of integrins via vesicles. The human CD151 gene maps to chromosome 11p15.5 and encodes a 253 amino acid protein, which belongs to the tetraspan (4TM) superfamily. CD151 can associate with several integrin chains including  $\alpha 1$ ,  $\alpha 3$ ,  $\alpha 4$ ,  $\alpha 2$ ,  $\alpha 3$ ,  $\alpha 5$  and  $\alpha 6$  integrins. CD151 may provide a framework for the spatial organization of both type I and type II hemidesmosomes, which are specialized junctional complexes that function as cell attachment sites for binding to basement membranes. CD151 RNA transcript (1.6 kb) can be detected in MO7e cells, bone marrow stromal cells, C11 endothelial cells, HUVEC and several myeloid leukemia cell lines, however, no transcript is detected in brain and the lymphoblastoid cell lines MOLT-4 and BALM-1. Leu 149-Glu 213 of CD151 is the interface through which Integrin  $\alpha 3 \beta 1$  can bind. CD151 can enhance cell motility, invasion and metastasis of cancer cells in a focal adhesion kinase dependent manner.

---

### Limitations and Warranty

This antibody is available for research use only and is not approved for diagnosis. There are no warranties, expressed or implied, which extend beyond this description. Company is not liable for any personal injury or economic loss resulting from this product.

---

### Supplied As

200ug/ml of Ab purified from Bioreactor Concentrate by Protein A/G. Prepared in 10mM PBS with 0.05% BSA & 0.05% azide. Also available WITHOUT BSA & azide at 1.0mg/ml.

---

### Storage and Stability

Antibody with azide - store at 2 to 8°C. Antibody without azide - store at -20 to -80°C. Antibody is stable for 24 months. Non-hazardous. No MSDS required.

---

### Research Areas

Mesenchymal Stem Cell Differentiation

---