

Recombinant CD68 (Macrophage Marker) Antibody

Rabbit Monoclonal Antibody [Clone C68/2908R]

Catalog No	Format	Size
968-RBM10-P0	Purified Ab with BSA and Azide at 200ug/ml	20 ug
968-RBM10-P1	Purified Ab with BSA and Azide at 200ug/ml	100 ug
968-RBM10-P1ABX	Purified Ab WITHOUT BSA and Azide at 1.0mg/ml	100 ug

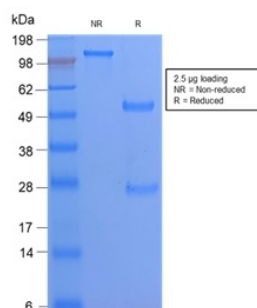
Applications	Tested Dillution	Note
Immunohistochemistry (IHC)	1-2ug/ml	30 min at RT. Staining of formalin-fixed tissues requires heating tissue sections in 10mM Tris with 1mM EDTA, pH 9.0, for 45 min at 95°C followed by cooling at RT for 20 minutes
Western Blot (WB)	2-4ug/ml	

Product Details

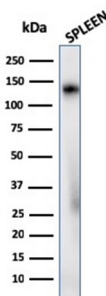
Clone	C68/2908R
Gene Name	CD68
Immunogen	Recombinant full-length human LAMP4 / CD68 protein
Host	Rabbit
Clonality	Monoclonal
Isotype / Light Chain	IgG / Kappa
Mol. Weight of Antigen	110kDa
Cellular Localization	Cell membrane, Endosome membrane, Lysosome membrane
Species Reactivity	Human
Positive Control	THP-1 cells, Human tonsil, lymph node or spleen.

**Optimal dilution for a specific application should be determined.*

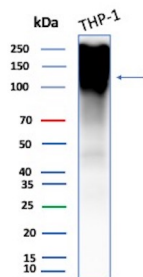
Product Images for Recombinant CD68 (Macrophage Marker) Antibody



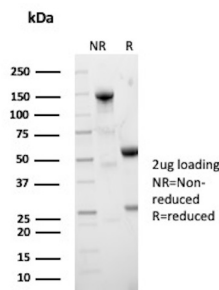
SDS-PAGE Analysis of Purified CD68 Rabbit Recombinant Monoclonal Antibody (C68/2908R). Confirmation of Purity and Integrity of Antibody.



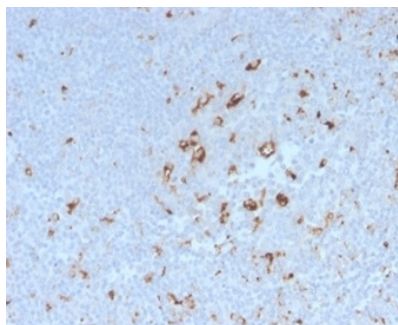
Western Blot Analysis of human spleen tissue lysate using CD68 Rabbit Recombinant Monoclonal Antibody (C68/2908R).



Western Blot Analysis of THP-1 cell lysate using CD68 Rabbit Recombinant Monoclonal Antibody (C68/2908R).



SDS-PAGE Analysis of Purified CD68 Recombinant Rabbit Monoclonal Antibody (C68/2908R). Confirmation of Purity and Integrity of Antibody.



Formalin-fixed, paraffin-embedded human tonsil stained with CD68 Rabbit Recombinant Monoclonal Antibody (C68/2908R). HIER: Tris/EDTA, pH9.0, 45min. 2°C: HRP-polymer, 30min. DAB, 5min.

Specificity & Comments

This antibody recognizes a glycoprotein of 110kDa, which is identified as CD68. It is important for identifying macrophages in tissue sections. It stains macrophages in a wide variety of human tissues, including Kupffer cells and macrophages in the red pulp of the spleen, in lamina propria of the gut, in lung alveoli, and in bone marrow. It reacts with myeloid precursors and peripheral blood granulocytes. It also reacts with plasmacytoid T cells, which are supposed to be of monocyte/macrophage origin. It shows strong granular cytoplasmic staining of chronic and acute myeloid leukemia and also reacts with rare cases of true histiocytic neoplasia. Lymphomas are negative or show few granules.

Limitations and Warranty

This antibody is available for research use only and is not approved for use in diagnosis. There are no warranties, expressed or implied, which extend beyond this description. Company is not liable for any personal injury or economic loss resulting from this product.

Supplied As

200ug/ml of Ab purified from Bioreactor Concentrate by Protein A/G. Prepared in 10mM PBS with 0.05% BSA & 0.05% azide. Also available WITHOUT BSA & azide at 1.0mg/ml.

Storage and Stability

Antibody with azide - store at 2 to 8 °C. Antibody without azide - store at -20 to -80 °C. Antibody is stable for 24 months. Non-hazardous. No MSDS required.

Research Areas

Immunology, Hematopoietic Stem Cells