

CD68 (Macrophage Marker) Antibody

Mouse Monoclonal Antibody [Clone C68/2511]

Catalog No	Format	Size
968-MSM8-P0	Purified Ab with BSA and Azide at 200ug/ml	20 ug
968-MSM8-P1	Purified Ab with BSA and Azide at 200ug/ml	100 ug
968-MSM8-P1ABX	Purified Ab WITHOUT BSA and Azide at 1.0mg/ml	100 ug

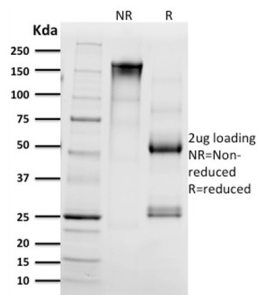
Applications	Tested Dillution	Note
Immunohistochemistry (IHC)	1-2ug/ml	30 min at RT. Staining of formalin-fixed tissues requires heating tissue sections in 10mM Tris with 1mM EDTA, pH 9.0, for 45 min at 95°C followed by cooling at RT for 20 minutes

Product Details

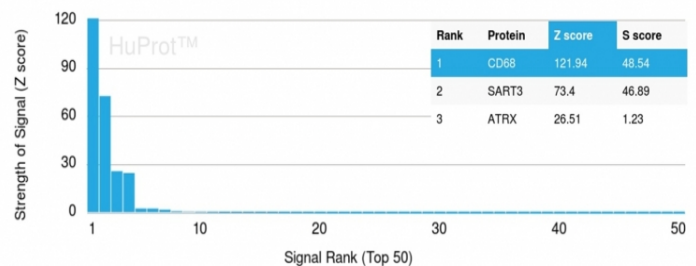
Clone	C68/2511
Gene Name	CD68
Immunogen	Recombinant fragment of human CD68 protein (around aa 150-221) (exact sequence is proprietary)
Host	Mouse
Clonality	Monoclonal
Isotype / Light Chain	IgG2b / Kappa
Mol. Weight of Antigen	110kDa
Cellular Localization	Cell membrane, Endosome membrane, Lysosome membrane
Species Reactivity	Human
Positive Control	lymph node or spleen., Tonsil

*Optimal dilution for a specific application should be determined.

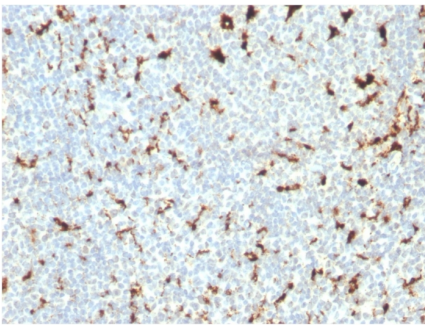
Product Images for CD68 (Macrophage Marker) Antibody



SDS-PAGE Analysis of Purified CD68 Mouse Monoclonal Antibody (C68/2511). Confirmation of Integrity and Purity of Antibody.



Analysis of Protein Array containing more than 19,000 full-length human proteins using CD68 Mouse Monoclonal Antibody (C68/2511). Z- and S- Score: The Z-score represents the strength of a signal that a monoclonal antibody (Monoclonal Antibody) (in combination with a fluorescently-tagged anti-IgG secondary antibody) produces when binding to a particular protein on the HuProt™ array. Z-scores are described in units of standard deviations (SD, σ s) above the mean value of all signals generated on that array. If targets on HuProt™ are arranged in descending order of the Z-score, the S-score is the difference (also in units of SD, σ s) between the Z-score. S-score therefore represents the relative target specificity of a Monoclonal Antibody to its intended target. A Monoclonal Antibody is considered to be specific to its intended target, if the Monoclonal Antibody has an S-score of at least 2.5. For example, if a Monoclonal Antibody binds to protein X with a Z-score of 43 and to protein Y with a Z-score of 14, then the S-score for the binding of that Monoclonal Antibody to protein X is equal to 29.



Formalin-fixed, paraffin-embedded human Tonsil stained with CD68 Mouse Monoclonal Antibody (C68/2511).

Specificity & Comments

This antibody recognizes a glycoprotein of 110kDa, which is identified as CD68. It is important for identifying macrophages in tissue sections. It stains macrophages in a wide variety of human tissues, including Kupffer cells and macrophages in the red pulp of the spleen, in lamina propria of the gut, in lung alveoli, and in bone marrow. It reacts with myeloid precursors and peripheral blood granulocytes. It also reacts with plasmacytoid T cells, which are supposed to be of monocyte/macrophage origin. It shows strong granular cytoplasmic staining of chronic and acute myeloid leukemia and also reacts with rare cases of true histiocytic neoplasia. Lymphomas are negative or show few granules.

Limitations and Warranty

This antibody is available for research use only and is not approved for use in diagnosis. There are no warranties, expressed or implied, which extend beyond this description. Company is not liable for any personal injury or economic loss resulting from this product.

Supplied As

200ug/ml of Ab Purified from Bioreactor Concentrate by Protein A/G. Prepared in 10mM PBS with 0.05% BSA & 0.05% azide. Also available WITHOUT BSA & azide at 1.0mg/ml.

Storage and Stability

Antibody with azide - store at 2 to 8°C. Antibody without azide - store at -20 to -80°C. Antibody is stable for 24 months. Non-hazardous. No MSDS required.

Research Areas

Hematopoietic Stem Cells, Immunology
