

## CD59 / Complement Regulatory Protein / Protectin Antibody

Mouse Monoclonal Antibody [Clone SPM616]

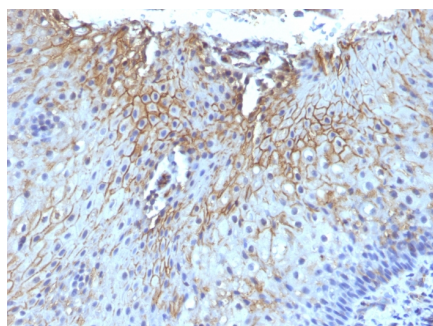
Catalog No	Format	Size
966-MSM3X-P0	Purified Ab with BSA and Azide	200ug/ml
966-MSM3X-P1	Purified Ab with BSA and Azide	200ug/ml
966-MSM3X-P1ABX	Purified Ab WITHOUT BSA and Azide	1.0mg/ml

Applications	Tested Dillution
Flow Cytometry (Flow)	1-2ug/million cells
Immunofluorescence (IF)	1-3ug/ml
Immunohistochemistry (IHC)	1-2ug/ml

Product Details	
Clone	SPM616
Gene Name	CD59
Immunogen	Recombinant full-length human CD59 protein
Host	Mouse
Clonality	Monoclonal
Isotype / Light Chain	IgG1 / Kappa
Mol. Weight of Antigen	20kDa
Cellular Localization	Cell membrane, Secreted
Species Reactivity	Human
Positive Control	Jurkat or Raji cells. Human lymphocytes. Human lymph node and tonsil.

*\*Optimal dilution for a specific application should be determined.*

### Product Images for CD59 / Complement Regulatory Protein / Protectin Antibody



Formalin-fixed, paraffin-embedded human Tongue stained with CD59 Monoclonal Antibody (SPM616)

### Specificity & Comments

Reacts with human CD59, a 20kDa glycosyl phosphatidyl-inositol (GPI)-anchored cell surface protein. CD59 regulates complement-mediated cell lysis, and it is involved in lymphocyte signal transduction. This protein is a potent inhibitor of the complement membrane attack complex, whereby it binds complement C8 and/or C9 during the assembly of this complex, thereby inhibiting the incorporation of multiple copies of C9 into the complex, which is necessary for osmolytic pore formation. It inhibits formation of MAC, thus protecting cells from complement-mediated lysis. Genetic defects in GPI-anchor attachment, that cause a reduction or loss of CD59 and CD55 on erythrocytes produce the symptoms of the disease paroxysmal hemoglobinuria (PNH). This MAb is useful for study on GPI-anchored proteins, PNH and CD59 functions. CD59 is widely distributed on cells in all tissues. The expression of CD59 on erythrocytes is important for their survival.

### Research Areas

Immunology, Complement System, Hematopoietic Stem Cells

### Known Applications & Suggested Dilutions

Functional Studies (Order Ab without Azide) | Flow Cytometry (1-2ug/million cells) | Immunofluorescence (1-2ug/ml) | Immunohistochemistry (Formalin-fixed) (1-2ug/ml for 30 minutes at RT)(Staining of formalin-fixed tissues requires heating tissue sections in 10mM Tris with 1mM EDTA, pH 9.0, for 45 min at 95&degC followed by cooling at RT for 20 minutes) | Optimal dilution for a specific application should be determined.

### Limitations and Warranty

This antibody is available for research use only and is not approved for use in diagnosis.

There are no warranties, expressed or implied, which extend beyond this description. Company is not liable for any personal injury or economic loss resulting from this product.

### Supplied As

200ug/ml of Ab Purified from Bioreactor Concentrate. Prepared in 10mM PBS with 0.05% BSA & 0.05% azide. Also available WITHOUT BSA & azide at 1.0mg/ml.

### Storage and Stability

Antibody with azide - store at 2 to 8°C. Antibody without azide - store at -20 to -80°C. Antibody is stable for 24 months. Non-hazardous. No MSDS required.