

Recombinant CD44 / HCAM (Cancer Stem Cell Marker) Antibody

Rabbit Monoclonal Antibody [Clone HCAM/4110R]

Catalog No	Format	Size
960-RBM21-P0	Purified Ab with BSA and Azide at 200ug/ml	20 ug
960-RBM21-P1	Purified Ab with BSA and Azide at 200ug/ml	100 ug
960-RBM21-P1ABX	Purified Ab WITHOUT BSA and Azide at 1.0mg/ml	100 ug

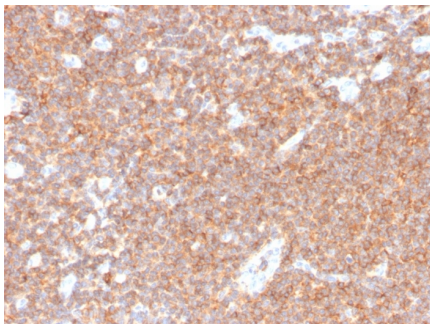
Applications	Tested Dillution	Note
Immunohistochemistry (IHC)	1-2ug/ml	30 min at RT. Staining of formalin-fixed tissues requires heating tissue sections in 10mM Tris with 1mM EDTA, pH 9.0, for 45 min at 95°C followed by cooling at RT for 20 minutes

Product Details

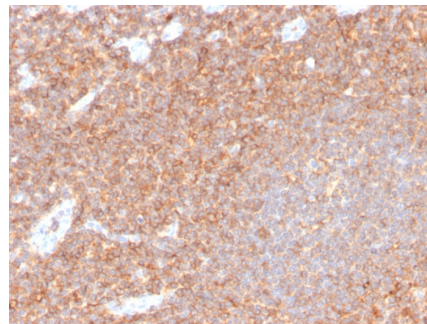
Clone	HCAM/4110R
Gene Name	CD44
Immunogen	Synthetic peptide corresponding to residues within aa150 to aa250 of CD44 was used as an immunogen.
Host	Rabbit
Clonality	Monoclonal
Isotype / Light Chain	IgG / Kappa
Mol. Weight of Antigen	82kDa
Cellular Localization	Cell membrane, Cell projection, Microvillus
Species Reactivity	Human
Positive Control	HeLa cells. Paracortex in tonsil or lymph node.

*Optimal dilution for a specific application should be determined.

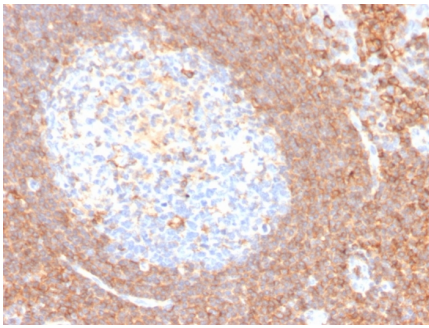
Product Images for Recombinant CD44 / HCAM (Cancer Stem Cell Marker) Antibody



Formalin-fixed, paraffin-embedded human tonsil stained with CD44 Rabbit Recombinant Monoclonal Antibody (HCAM/4110R).



Formalin-fixed, paraffin-embedded human tonsil stained with CD44 Rabbit Recombinant Monoclonal Antibody (HCAM/4110R).



Formalin-fixed, paraffin-embedded human tonsil stained with CD44 Rabbit Recombinant Monoclonal Antibody (HCAM/4110R).

Specificity & Comments

CD44 is an adhesion molecule, which binds hyaluronic acid and participates in a number of cell-cell interactions, including lymphocyte homing. CD44 is expressed on approximately 90% of lymphocytes, monocytes, granulocytes, and, in lower amounts on thymocytes, fibroblasts, and erythrocytes. The expression of specific cell adhesion molecule CD44 splice variants has been reported to be associated with metastasis in certain human malignancies.

Supplied As

200ug/ml of Ab purified from Bioreactor Concentrate by Protein A/G. Prepared in 10mM PBS with 0.05% BSA & 0.05% azide. Also available WITHOUT BSA & azide at 1.0mg/ml.

Storage and Stability

Antibody with azide - store at 2 to 8 °C. Antibody without azide - store at -20 to -80 °C. Antibody is stable for 24 months. Non-hazardous. No MSDS required.

Research Areas

Articular Cartilage Extracellular Matrix, Cardiovascular, Cytokine Signaling, Hematopoietic Stem Cells, Immunology, Mesenchymal Stem Cell Differentiation, Neural Stem Cells

Limitations and Warranty

This antibody is available for research use only and is not approved for use in diagnosis. There are no warranties, expressed or implied, which extend beyond this description. Company is not liable for any personal injury or economic loss resulting from this product.
