

Recombinant CD38 (ADP Ribosyl Cyclase I) Antibody

Rabbit Monoclonal Antibody [Clone CD38/4247R]

Catalog No	Format	Size
952-RBM7-P0	Purified Ab with BSA and Azide at 200ug/ml	20 ug
952-RBM7-P1	Purified Ab with BSA and Azide at 200ug/ml	100 ug
952-RBM7-P1ABX	Purified Ab WITHOUT BSA and Azide at 1.0mg/ml	100 ug

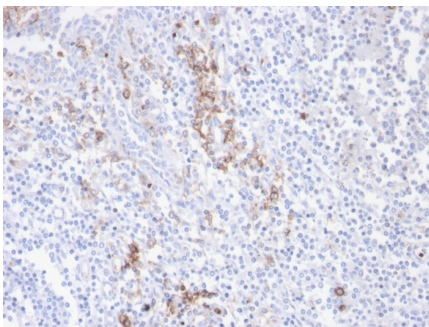
Applications	Tested Dillution	Note
Immunohistochemistry (IHC)	1-2ug/ml	30 min at RT. Staining of formalin-fixed tissues requires heating tissue sections in 10mM Tris with 1mM EDTA, pH 9.0, for 45 min at 95°C followed by cooling at RT for 20 minutes
Western Blot (WB)	2-4ug/ml	

Product Details

Clone	CD38/4247R
Gene Name	CD38
Immunogen	Recombinant fragment (around aa200-300) of human CD38 protein (exact sequence is proprietary)
Host	Rabbit
Clonality	Monoclonal
Isotype / Light Chain	IgG / Kappa
Mol. Weight of Antigen	~45kDa (Glycoprotein); 35kDa (protein core)
Cellular Localization	Membrane
Species Reactivity	Human
Positive Control	Human tonsil or spleen. Raji cells.

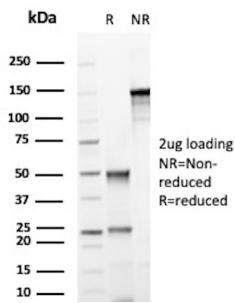
*Optimal dilution for a specific application should be determined.

Product Images for Recombinant CD38 (ADP Ribosyl Cyclase I) Antibody

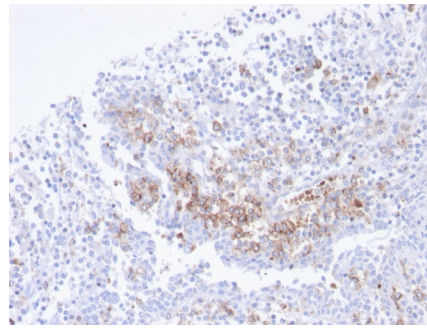


Formalin-fixed, paraffin-embedded human tonsil stained with CD38 Recombinant Rabbit Monoclonal Antibody (CD38/4247R).

Western blot analysis of Raji cell lysate using CD38 Recombinant Rabbit Monoclonal Antibody (CD38/4247R).



SDS-PAGE Analysis of Purified ADP-ribosyl cyclase/cyclic ADP-ribose hydrolase 1 Recombinant Rabbit Monoclonal Antibody (CD38/4247R). Confirmation of Purity and Integrity of Antibody.



Formalin-fixed, paraffin-embedded human tonsil stained with CD38 Recombinant Rabbit Monoclonal Antibody (CD38/4247R).

Specificity & Comments

CD38 is a type II transmembrane glycoprotein that is present on early B- and T-cell lineages and activated B- and T-cells but is absent from most mature resting peripheral lymphocytes. CD38 is found on thymocytes, pre-B cells, germinal center B-cells, mitogen-activated T-cells, monocytes and Ig-secreting plasma cells. CD38 is expressed on CD34+ cells. The CD34+CD38- population of hematopoietic stem cells define the most pluripotent cells (e.g. blast colony forming cells).

Supplied As

200ug/ml of Ab purified from Bioreactor Concentrate by Protein A/G. Prepared in 10mM PBS with 0.05% BSA & 0.05% azide. Also available WITHOUT BSA & azide at 1.0mg/ml.

Storage and Stability

Antibody with azide - store at 2 to 8 °C. Antibody without azide - store at -20 to -80 °C. Antibody is stable for 24 months. Non-hazardous. No MSDS required.

Research Areas

B Cell Markers, Hematopoietic Stem Cells

Limitations and Warranty

This antibody is available for research use only and is not approved for diagnosis. There are no warranties, expressed or implied, which extend beyond this description. Company is not liable for any personal injury or economic loss resulting from this product.