

## CD38 (ADP Ribosyl Cyclase I) Antibody

Mouse Monoclonal Antibody [Clone CD38/4328]

Catalog No	Format	Size
952-MSM8-P0	Purified Ab with BSA and Azide at 200ug/ml	20 ug
952-MSM8-P1	Purified Ab with BSA and Azide at 200ug/ml	100 ug
952-MSM8-P1ABX	Purified Ab WITHOUT BSA and Azide at 1.0mg/ml	100 ug

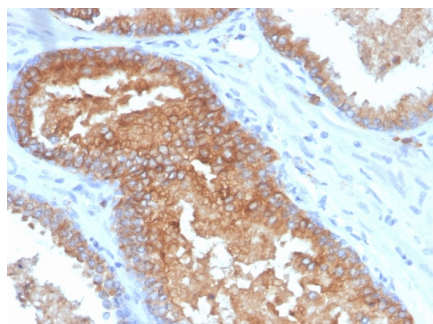
Applications	Tested Dillution	Note
Flow Cytometry (Flow)	1-2ug/million cells	
Immunofluorescence (IF)	1-3ug/ml	
Immunohistochemistry (IHC)	1-2ug/ml	30 min at RT. Staining of formalin-fixed tissues requires heating tissue sections in 10mM Tris with 1mM EDTA, pH 9.0, for 45 min at 95°C followed by cooling at RT for 20 minutes
Western Blot (WB)	2-4ug/ml	

### Product Details

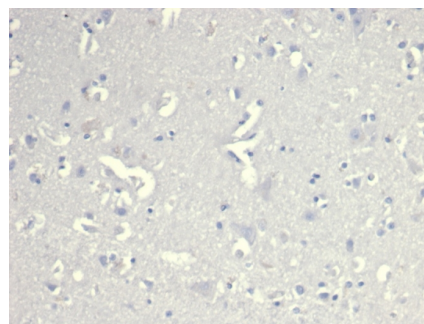
Clone	CD38/4328
Gene Name	CD38
Immunogen	Recombinant full-length human CD38 protein
Host	Mouse
Clonality	Monoclonal
Isotype / Light Chain	IgG1 / Kappa
Mol. Weight of Antigen	~45kDa (Glycoprotein); 35kDa (protein core)
Cellular Localization	Membrane
Species Reactivity	Human
Positive Control	Raji cells. Human tonsil, Spleen or Skin.

*\*Optimal dilution for a specific application should be determined.*

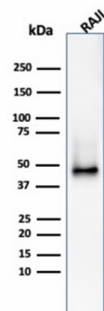
### Product Images for CD38 (ADP Ribosyl Cyclase I) Antibody



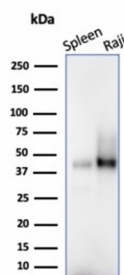
IHC analysis of formalin-fixed, paraffin-embedded human prostate carcinoma. Strong cytoplasmic and membranous staining using CD38/4328 at 2ug/ml in PBS for 30min RT. HIER: Tris/EDTA, pH9.0, 45min. 2 °: HRP-polymer, 30min. DAB, 5min.



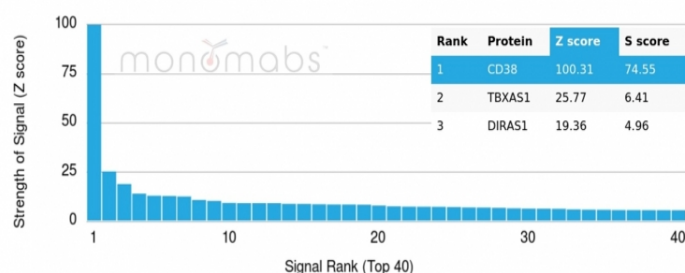
IHC analysis of formalin-fixed, paraffin-embedded human cerebral cortex. Negative tissue control using CD38/4328 at 2ug/ml in PBS for 30min RT. HIER: Tris/EDTA, pH9.0, 45min. 2 °: HRP-polymer, 30min. DAB, 5min.



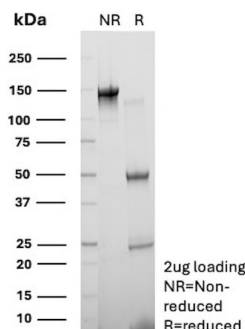
Western Blot Analysis of Raji cell lysate using CD38 Mouse Monoclonal Antibody (CD38/4328).



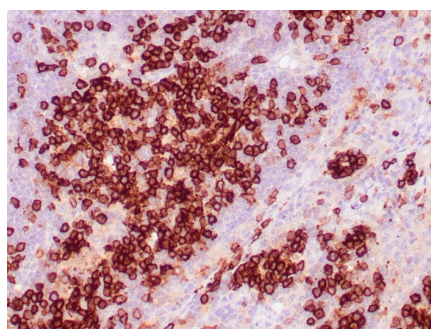
Western blot analysis of human spleen tissue and Raji cell lysates using CD38 Mouse Monoclonal Antibody (CD38/4328).



Analysis of Protein Array containing more than 19,000 full-length human proteins using CD38 Mouse Monoclonal Antibody (CD38/4328). Z- and S- Score: The Z-score represents the strength of a signal that a monoclonal antibody (MAb) (in combination with a fluorescently-tagged anti-IgG secondary antibody) produces when binding to a particular protein on the HuProt™ array. Z-scores are described in units of standard deviations (SD's) above the mean value of all signals generated on that array. If targets on HuProt™ are arranged in descending order of the Z-score, the S-score is the difference (also in units of SD's) between the Z-score. S-score therefore represents the relative target specificity of a MAb to its intended target. A MAb is considered to specific to its intended target, if the MAb has an S-score of at least 2.5. For example, if a MAb binds to protein X with a Z-score of 43 and to protein Y with a Z-score of 14, then the S-score for the binding of that MAb to protein X is equal to 29.



SDS-PAGE Analysis of Purified CD38 Mouse Monoclonal Antibody (CD38/4328). Confirmation of Purity and Integrity of Antibody.



IHC analysis of formalin-fixed, paraffin-embedded human tonsil. Strong cytoplasmic and membranous staining using CD38/4328 at 2ug/ml in PBS for 30min RT. HIER: Tris/EDTA, pH9.0, 45min. 2 °: HRP-polymer, 30min. DAB, 5min.

## Specificity & Comments

CD38 is a type II transmembrane glycoprotein that is present on early B- and T-cell lineages and activated B- and T-cells but is absent from most mature resting peripheral lymphocytes. CD38 is also found on thymocytes, pre-B cells, germinal center B-cells, mitogen-activated T-cells, monocytes and Ig-secreting plasma cells. CD38 is expressed on CD34+ cells. The CD34+CD38- population of hematopoietic stem cells define the most pluripotent cells (e.g. blast colony forming cells).

## Supplied As

200ug/ml of Ab purified from Bioreactor Concentrate by Protein A/G. Prepared in 10mM PBS with 0.05% BSA & 0.05% azide. Also available WITHOUT BSA & azide at 1.0mg/ml.

## Storage and Stability

Antibody with azide - store at 2 to 8 °C. Antibody without azide - store at -20 to -80 °C. Antibody is stable for 24 months. Non-hazardous. No MSDS required.

## Research Areas

B Cell Markers, Hematopoietic Stem Cells

### Limitations and Warranty

This antibody is available for research use only and is not approved for diagnosis. There are no warranties, expressed or implied, which extend beyond this description. Company is not liable for any personal injury or economic loss resulting from this product.

---