

## CD38 (ADP Ribosyl Cyclase 1) Antibody

Mouse Monoclonal Antibody [Clone FS02]

| Catalog No     | Format  | Size   |
|----------------|---|--------|
| 952-MSM3-P0    | Purified Ab with BSA and Azide at 200ug/ml    | 20 ug  |
| 952-MSM3-P1    | Purified Ab with BSA and Azide at 200ug/ml    | 100 ug |
| 952-MSM3-P1ABX | Purified Ab WITHOUT BSA and Azide at 1.0mg/ml | 100 ug |

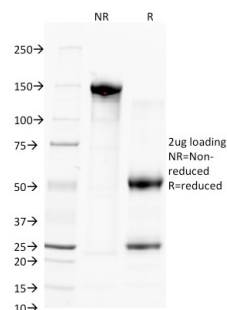
| Applications            | Tested Dillution    | Note |
|-------------------------|---------------------|------|
| Flow Cytometry (Flow)   | 1-2ug/million cells |      |
| Immunofluorescence (IF) | 1-3ug/ml            |      |

### Product Details

|                               |   |
|-------------------------------|---|
| <b>Clone</b>                  | FS02  |
| <b>Gene Name</b>              | CD38  |
| <b>Immunogen</b>              | Human CD38                                  |
| <b>Host</b>                   | Mouse                                       |
| <b>Clonality</b>              | Monoclonal                                  |
| <b>Isotype / Light Chain</b>  | IgG1 / Kappa                                |
| <b>Mol. Weight of Antigen</b> | ~45kDa (Glycoprotein); 35kDa (protein core) |
| <b>Cellular Localization</b>  | Membrane                                    |
| <b>Species Reactivity</b>     | Human                                       |
| <b>Positive Control</b>       | CCRF-CEM cells, Spleen or Skin., Tonsil     |

\*Optimal dilution for a specific application should be determined.

### Product Images for CD38 (ADP Ribosyl Cyclase 1) Antibody



SDS-PAGE Analysis of Purified CD38 Mouse Monoclonal Antibody (FS02).  
Confirmation of Purity and Integrity of Antibody.

### Specificity & Comments

This antibody reacts with a type II membrane glycopeptide with a transmembrane sequence near the NH<sub>2</sub>-terminus. CD38 is a type II transmembrane glycoprotein that is present on early B- and T-cell lineages and activated B- and T-cells but is absent from most mature resting peripheral lymphocytes. CD38 is also found on thymocytes, pre-B cells, germinal center B-cells, mitogen-activated T-cells, monocytes and Ig-secreting plasma cells. CD38 is expressed on CD34+ cells. The CD34+CD38- population of hematopoietic stem cells defines the most pluripotent cells (e.g. blast colony forming cells).

### Supplied As

200ug/ml of Ab Purified from Bioreactor Concentrate by Protein A/G. Prepared in 10mM PBS with 0.05% BSA & 0.05% azide. Also available WITHOUT BSA & azide at 1.0mg/ml.

### Storage and Stability

Antibody with azide - store at 2 to 8°C. Antibody without azide - store at -20 to -80°C. Antibody is stable for 24 months. Non-hazardous. No MSDS required.

### Research Areas

B Cell Markers, Hematopoietic Stem Cells, Hypoxia

### Limitations and Warranty

This antibody is available for research use only and is not approved for use in diagnosis. There are no warranties, expressed or implied, which extend beyond this description. Company is not liable for any personal injury or economic loss resulting from this product.