

CD38 (ADP Ribosyl Cyclase I) Antibody

Mouse Monoclonal Antibody [Clone AT1]

Catalog No	Format	Size
952-MSM2-P0	Purified Ab with BSA and Azide at 200ug/ml	20 ug
952-MSM2-P1	Purified Ab with BSA and Azide at 200ug/ml	100 ug
952-MSM2-P1ABX	Purified Ab WITHOUT BSA and Azide at 1.0mg/ml	100 ug

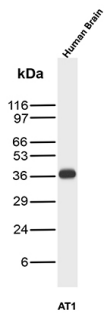
Applications	Tested Dillution	Note
Flow Cytometry (Flow)	1-2ug/million cells	
Immunofluorescence (IF)	1-3ug/ml	
Western Blot (WB)	2-4ug/ml	

Product Details

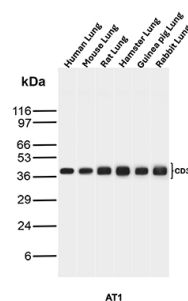
Clone	AT1
Gene Name	CD38
Immunogen	human T cell line CCRF-CEM
Host	Mouse
Clonality	Monoclonal
Isotype / Light Chain	IgG1 / Kappa
Mol. Weight of Antigen	~45kDa (Glycoprotein); 35kDa (protein core)
Cellular Localization	Membrane
Species Reactivity	Human
Positive Control	CCRF-CEM cells, Spleen or Skin, Tonsil, brain. Lung.

*Optimal dilution for a specific application should be determined.

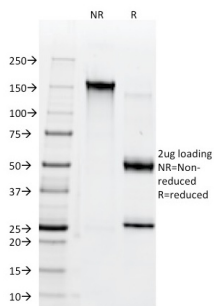
Product Images for CD38 (ADP Ribosyl Cyclase I) Antibody



Western blot analysis of Human brain lysate using CD38 Mouse Monoclonal Antibody (AT1).



Western blot analysis of lung tissue lysates of different species using CD38 Mouse Monoclonal Antibody (AT1).



SDS-PAGE Analysis of Purified CD38 Mouse Monoclonal Antibody (AT1).
Confirmation of Integrity and Purity of Antibody.

Specificity & Comments

CD38 is a type II transmembrane glycoprotein that is present on early B- and T-cell lineages and activated B- and T-cells but is absent from most mature resting peripheral lymphocytes. CD38 is also found on thymocytes, pre-B cells, germinal center B-cells, mitogen-activated T-cells, monocytes and Ig-secreting plasma cells. CD38 is expressed on CD34+ cells. The CD34+CD38- population of hematopoietic stem cells defines the most pluripotent cells (e.g. blast colony forming cells).

Supplied As

200ug/ml of Ab produced in HEK293 cell mammalian-based expression system. Prepared in 10mM PBS with 0.05% BSA & 0.05% azide. Also available WITHOUT BSA & azide at 1.0mg/ml.

Storage and Stability

Antibody with azide - store at 2 to 8 °C. Antibody without azide - store at -20 to -80 °C. Antibody is stable for 24 months. Non-hazardous. No MSDS required.

Research Areas

B Cell Markers, Hematopoietic Stem Cells

Limitations and Warranty

This antibody is available for research use only and is not approved for diagnosis. There are no warranties, expressed or implied, which extend beyond this description. Company is not liable for any personal injury or economic loss resulting from this product.