

## Recombinant Napsin A (Lung Adenocarcinoma Marker) Antibody

Rabbit Monoclonal Antibody [Clone NAPSA/1865R]

Catalog No	Format	Size
9476-RBM5-P0	Purified Ab with BSA and Azide at 200ug/ml	20 ug
9476-RBM5-P1	Purified Ab with BSA and Azide at 200ug/ml	100 ug
9476-RBM5-P1ABX	Purified Ab WITHOUT BSA at 1.0mg/ml	100 ug

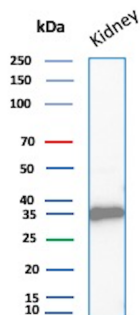
Applications	Tested Dillution	Note
Immunohistochemistry (IHC)	1-2ug/ml	30 min at RT. Staining of formalin-fixed tissues requires heating tissue sections in 10mM Tris with 1mM EDTA, pH 9.0, for 45 min at 95°C followed by cooling at RT for 20 minutes
Western Blot (WB)	2-4ug/ml	

### Product Details

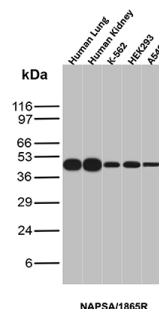
<b>Clone</b>	NAPSA/1865R
<b>Gene Name</b>	NAPSA
<b>Immunogen</b>	Recombinant human Napsin-A protein fragment (aa189-299) (exact sequence is proprietary)
<b>Host</b>	Rabbit
<b>Clonality</b>	Monoclonal
<b>Isotype / Light Chain</b>	IgG / Kappa
<b>Mol. Weight of Antigen</b>	37kDa
<b>Cellular Localization</b>	Secreted
<b>Species Reactivity</b>	Human, Rabbit, Rat
<b>Positive Control</b>	Lung adenocarcinoma, Lung, Kidney, K-562, HEK293, A549, Human Brain, Human Heart, Human Intestine, Human Kidney, Human Liver, Human Lung, Human Ovary, Human Pancreas, Human Prostrate, Human Skeletal Muscle, Human Skin, Human Spleen, Human Stomach, Human Testis

\*Optimal dilution for a specific application should be determined.

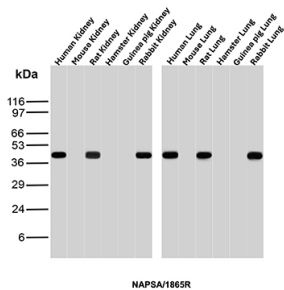
### Product Images for Recombinant Napsin A (Lung Adenocarcinoma Marker) Antibody



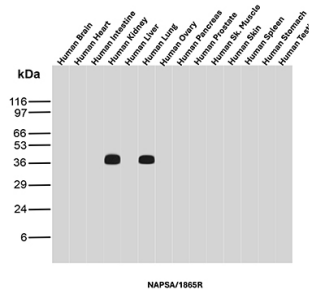
Western Blot Analysis of Human Kidney lysate using Napsin-A Rabbit Recombinant Monoclonal Antibody (NAPSA/1865R).



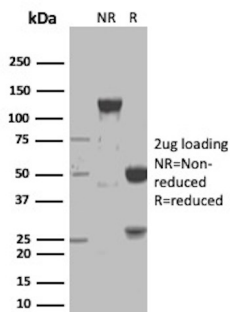
Western Blot Analysis of Human Lung, Human Kidney, K-562, HEK293, and A549 lysates using Napsin A Recombinant Rabbit Monoclonal Antibody (NAPSA/1865R).



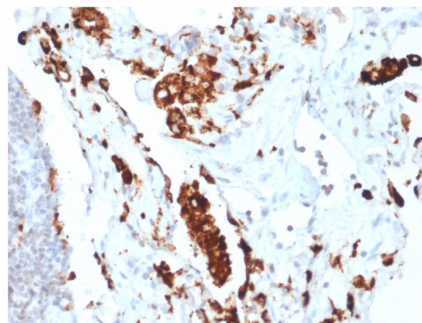
Western blot analysis of Human Kidney, Mouse Kidney, Rat Kidney, Hamster Kidney, Guinea pig Kidney, Rabbit Kidney, Human Lung, Mouse Lung, Rat Lung, Hamster Lung, Guinea pig Lung, and Rabbit Lung tissue lysates using Napsin A Recombinant Rabbit Monoclonal Antibody (NAPSA/1865R).



Western Blot Analysis of Human Brain, Human Heart, Human Intestine, Human Kidney, Human Liver, Human Lung, Human Ovary, Human Pancreas, Human Prostate, Human Skeletal Muscle, Human Skin, Human Spleen, Human Stomach, and Human Testis tissue lysates using Napsin A Recombinant Rabbit Monoclonal Antibody (NAPSA/1865R).



SDS-PAGE Analysis of Purified Napsin-A Recombinant Rabbit Monoclonal Antibody (NAPSA/1865R). Confirmation of Purity and Integrity of Antibody.



Formalin-fixed, paraffin-embedded human Lung Adenocarcinoma stained with Napsin A Rabbit Recombinant Monoclonal Antibody (NAPSA/1865R).

### Specificity & Comments

Napsin is a pepsin-like aspartic proteinase connected with maturation of surfactant protein B. There are two closely related napsins, napsin A and napsin B. Napsin A is expressed as a single chain protein. Immunohistochemical studies revealed high expression levels of napsin A in human lung and kidney but low expression in spleen. Napsin A is expressed in type II pneumocytes and in adenocarcinomas of lung. The high specificity expression of napsin A in adenocarcinomas of lung is useful to distinguish primary lung adenocarcinomas from adenocarcinomas of other organs.

### Limitations and Warranty

This antibody is available for research use only and is not approved for use in diagnosis. There are no warranties, expressed or implied, which extend beyond this description. Company is not liable for any personal injury or economic loss resulting from this product.

### Supplied As

200ug/ml of recombinant MAb Purified by Protein A/G. Prepared in 10mM PBS with 0.05% BSA & 0.05% azide. Also available WITHOUT BSA & azide at 1.0mg/ml.

### Storage and Stability

Antibody with azide - store at 2 to 8°C. Antibody without azide - store at -20 to -80°C. Antibody is stable for 24 months. Non-hazardous. No MSDS required.

### Research Areas

Dendritic Cell Marker