

Recombinant Napsin A (Lung Adenocarcinoma Marker) Antibody

Rabbit Monoclonal Antibody [Clone NAPSA/4400R]

Catalog No	Format	Size
9476-RBM12-P0	Purified Ab with BSA and Azide at 200ug/ml	20 ug
9476-RBM12-P1	Purified Ab with BSA and Azide at 200ug/ml	100 ug
9476-RBM12-P1ABX	Purified Ab WITHOUT BSA at 1.0mg/ml	100 ug

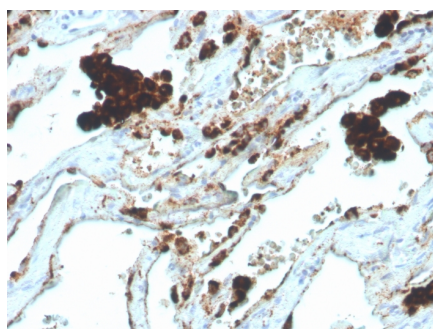
Applications	Tested Dillution	Note
Immunohistochemistry (IHC)	1-2ug/ml	30 min at RT. Staining of formalin-fixed tissues requires heating tissue sections in 10mM Tris with 1mM EDTA, pH 9.0, for 45 min at 95°C followed by cooling at RT for 20 minutes
Western Blot (WB)	2-4ug/ml	

Product Details

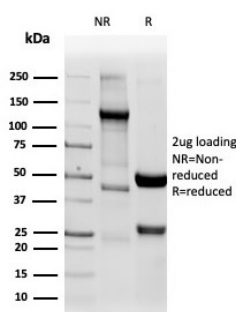
Clone	NAPSA/4400R
Gene Name	NAPSA
Immunogen	Recombinant fragment (aa50-150) of human Napsin A protein (exact sequence is proprietary)
Host	Rabbit
Clonality	Monoclonal
Isotype / Light Chain	IgG / Kappa
Mol. Weight of Antigen	37kDa
Cellular Localization	Secreted
Species Reactivity	Human
Positive Control	Human Kidney, Lung, A549, K-562

*Optimal dilution for a specific application should be determined.

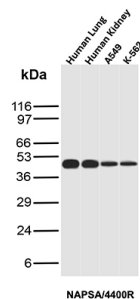
Product Images for Recombinant Napsin A (Lung Adenocarcinoma Marker) Antibody



IHC analysis of formalin-fixed, paraffin-embedded human lungadenocarcinoma. NAPSA/4400R at 2ug/ml in PBS for 30min RT. HIER: Tris/EDTA, pH9.0, 45min. 2 °: HRP-polymer, 30min. DAB, 5min.

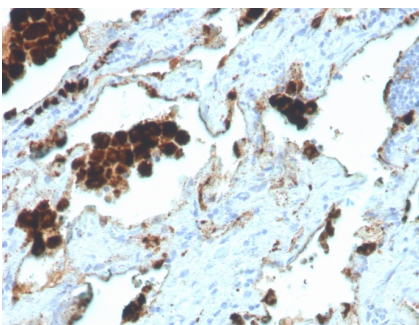
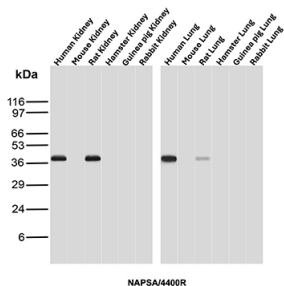


SDS-PAGE Analysis Purified Napsin A Recombinant Rabbit Monoclonal Antibody (NAPSA/4400R). Confirmation of Purity and Integrity of Antibody.



Analysis of Protein Array containing more than 19,000 full-length human proteins using Napsin A-Monospecific Recombinant Rabbit Monoclonal Antibody (NAPSA/4400R). Z- and S- Score: The Z-score represents the strength of a signal that a monoclonal antibody (MAb) (in combination with a fluorescently-tagged anti-IgG secondary antibody) produces when binding to a particular protein on the HuProt™ array. Z-scores are described in units of standard deviations (SD's) above the mean value of all signals generated on that array. If targets on HuProt™ are arranged in descending order of the Z-score, the S-score is the difference (also in units of SD's) between the Z-score. S-score therefore represents the relative target specificity of a MAb to its intended target. A MAb is considered to be specific to its intended target, if the MAb has an S-score of at least 2.5. For example, if a MAb binds to protein X with a Z-score of 43 and to protein Y with a Z-score of 14, then the S-score for the binding of that MAb to protein X is equal to 29.

Western Blot Analysis of Human Lung, Human Kidney, A549 and K-562 lysates of using Napsin A Rabbit Recombinant Monoclonal Antibody (NAPSA/4400R).



Western Blot Analysis of Kidney and Lung tissue lysates of different species using Napsin A Rabbit Recombinant Monoclonal Antibody (NAPSA/4400R).

IHC analysis of formalin-fixed, paraffin-embedded human lung adenocarcinoma. NAPSA/4400R at 2ug/ml in PBS for 30min RT. HIER: Tris/EDTA, pH9.0, 45min. 2 °: HRP-polymer, 30min. DAB, 5min.

Specificity & Comments

Napsin is a pepsin-like aspartic proteinase connected with maturation of surfactant protein B. There are two closely related napsins, napsin A and napsin B. Napsin A is expressed as a single chain protein. Immunohistochemical studies revealed high expression levels of napsin A in human lung and kidney but low expression in spleen. Napsin A is expressed in type II pneumocytes and in adenocarcinomas of lung. The high specificity expression of napsin A in adenocarcinomas of lung is useful to distinguish primary lung adenocarcinomas from adenocarcinomas of other organs.

Supplied As

200ug/ml of Ab purified from rabbit anti-serum by Protein A. Prepared in 10mM PBS with 0.05% BSA & 0.05% azide. Also available WITHOUT BSA at 1.0mg/ml.

Storage and Stability

Antibody with azide - store at 2 to 8 °C. Antibody without azide - store at -20 to -80 °C. Antibody is stable for 24 months. Non-hazardous. No MSDS required.

Research Areas

Dendritic Cell Marker

Limitations and Warranty

This antibody is available for research use only and is not approved for use in diagnosis. There are no warranties, expressed or implied, which extend beyond this description. Company is not liable for any personal injury or economic loss resulting from this product.