

ATG5 (Autophagy Marker) Antibody

Mouse Monoclonal Antibody [Clone ATG5/2492]

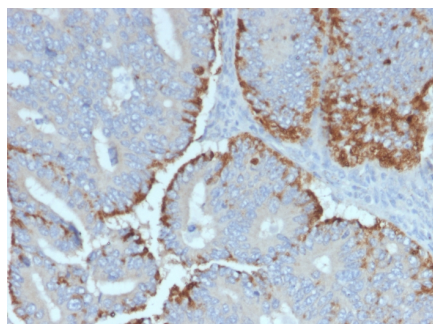
Catalog No	Format	Size
9474-MSM2-P0	Purified Ab with BSA and Azide	200ug/ml
9474-MSM2-P1	Purified Ab with BSA and Azide	200ug/ml
9474-MSM2-P1ABX	Purified Ab WITHOUT BSA and Azide	1.0mg/ml

Applications	Tested Dillution
Immunohistochemistry (IHC)	1-2ug/ml
Western Blot (WB)	2-4ug/ml

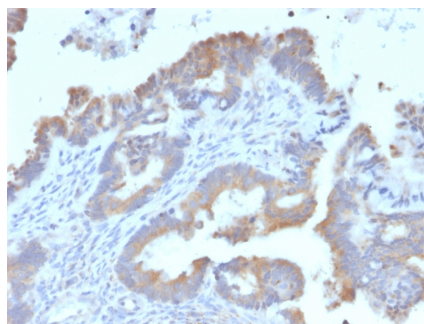
Product Details	
Clone	ATG5/2492
Gene Name	ATG5
Immunogen	Recombinant fragment of human ATG5 protein (around aa 1-119) (exact sequence is proprietary)
Host	Mouse
Clonality	Monoclonal
Isotype / Light Chain	IgG1 / Kappa
Mol. Weight of Antigen	50-32kDa
Cellular Localization	Cytoplasm, Preautophagosomal structure membrane
Species Reactivity	Human
Positive Control	Colon or Duodenum (IHC)., Endometrium, ovary, PANC-1, Raji or HeLa cells. Brain, THP1

**Optimal dilution for a specific application should be determined.*

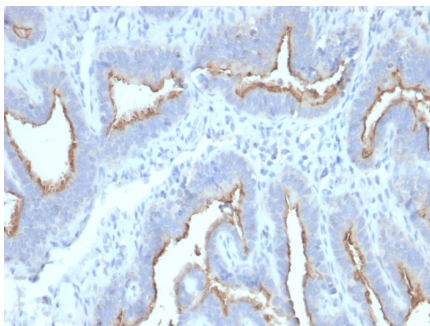
Product Images for ATG5 (Autophagy Marker) Antibody



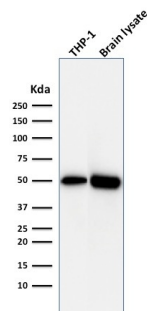
Formalin-fixed, paraffin-embedded human Colon Carcinoma stained with ATG5 Mouse Monoclonal Antibody (ATG5/2492).



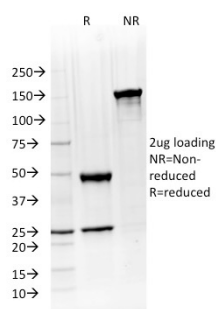
Formalin-fixed, paraffin-embedded human Endometrial Carcinoma stained with ATG5 Mouse Monoclonal Antibody (ATG5/2492).



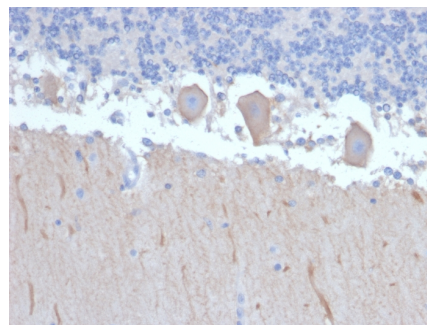
Formalin-fixed, paraffin-embedded human Ovarian Carcinoma stained with ATG5 Mouse Monoclonal Antibody (ATG5/2492).



Western Blot Analysis of THP1 cell lysate and Brain tissue lysate using ATG5 Mouse Monoclonal Antibody (ATG5/2492).



SDS-PAGE Analysis Purified ATG5 Mouse Monoclonal Antibody (ATG5/2492). Confirmation of Purity and Integrity of Antibody.



Formalin-fixed, paraffin-embedded human Brain stained with ATG5 Mouse Monoclonal Antibody (ATG5/2492).

Specificity & Comments

The protein encoded by this gene, in combination with autophagy protein 12, functions as an E1-like activating enzyme in a ubiquitin-like conjugating system. The encoded protein is involved in several cellular processes, including autophagic vesicle formation, mitochondrial quality control after oxidative damage, negative regulation of the innate antiviral immune response, lymphocyte development and proliferation, MHC II antigen presentation, adipocyte differentiation, and apoptosis. The ATG5 protein is essential for autophagy; a process that is usually beneficial for cells to self-degrade their own components when they are no longer useful.

Research Areas

Immunology

Known Applications & Suggested Dilutions

ELISA (For coating use Ab at 1-5ug/ml, order Ab without BSA) | Western Blot (1-2ug/ml) | Immunohistochemistry (Formalin-fixed) (1-2ug/ml for 30 min at RT)(Staining of formalin-fixed tissues requires heating tissue sections in 10mM Tris with 1mM EDTA, pH 9.0, for 45 min at 95°C followed by cooling at RT for 20 minutes) | Optimal dilution for a specific application should be determined.

Limitations and Warranty

This antibody is available for research use only and is not approved for use in diagnosis.

There are no warranties, expressed or implied, which extend beyond this description. Company is not liable for any personal injury or economic loss resulting from this product.

Supplied As

200ug/ml of Ab Purified from Bioreactor Concentrate by Protein A/G. Prepared in 10mM PBS with 0.05% BSA & 0.05% azide. Also available WITHOUT BSA & azide at 1.0mg/ml.

Storage and Stability

Antibody with azide - store at 2 to 8°C. Antibody without azide - store at -20 to -80°C. Antibody is stable for 24 months. Non-hazardous. No MSDS required.