

QKI / Protein Quaking Antibody

Mouse Monoclonal Antibody [Clone PCRP-QKI-2F10]

Catalog No	Format	Size
9444-MSM1-P0	Purified Ab with BSA and Azide at 200ug/ml	20 ug
9444-MSM1-P1	Purified Ab with BSA and Azide at 200ug/ml	100 ug
9444-MSM1-P1ABX	Purified Ab WITHOUT BSA and Azide at 1.0mg/ml	100 ug

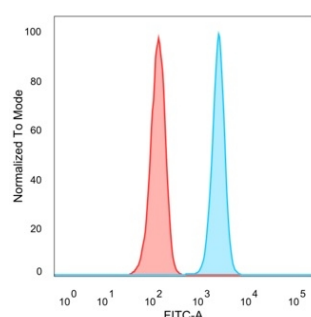
Applications	Tested Dillution	Note
Flow Cytometry (Flow)	1-2ug/million cells	
Immunofluorescence (IF)	1-3ug/ml	
Western Blot (WB)	2-4ug/ml	

Product Details

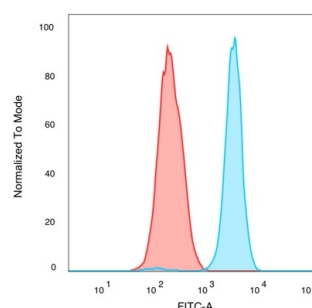
Clone	PCRP-QKI-2F10
Gene Name	QKI
Immunogen	Recombinant full-length human QKI protein
Host	Mouse
Clonality	Monoclonal
Isotype / Light Chain	IgG2c
Mol. Weight of Antigen	37.6kDa
Cellular Localization	Cytoplasm, Nucleus
Species Reactivity	Human
Positive Control	HeLa, K562 or MCF7 cells., U87

**Optimal dilution for a specific application should be determined.*

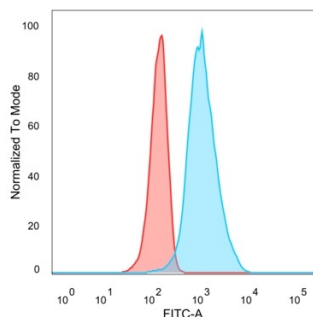
Product Images for QKI / Protein Quaking Antibody



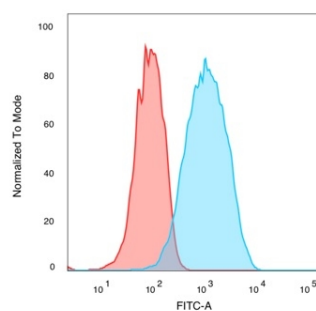
Flow cytometric analysis of PFA-fixed HeLa cells. QKI Mouse Monoclonal Antibody (PCRP-QKI-2F10) followed by goat anti-mouse IgG-CF488 (blue); isotype control (red).



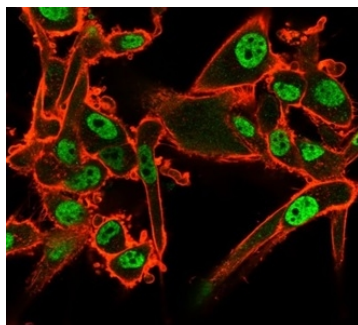
Flow cytometric analysis of PFA-fixed K562 cells. QKI Mouse Monoclonal Antibody (PCRP-QKI-2F10) followed by goat anti-mouse IgG-CF488 (blue); isotype control (red).



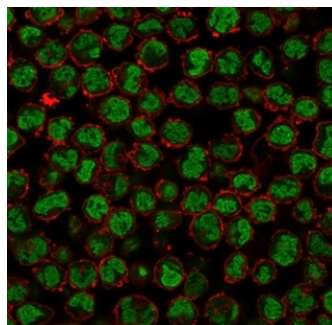
Flow cytometric analysis of PFA-fixed U87 cells. QKI Mouse Monoclonal Antibody (PCRP-QKI-2F10) followed by goat anti-mouse IgG-CF488 (blue); isotype control (red).



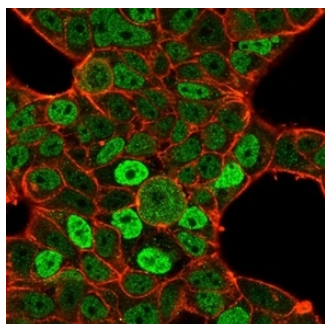
Flow cytometric analysis of PFA-fixed MCF7 cells. QKI Mouse Monoclonal Antibody (PCRP-QKI-2F10) followed by goat anti-mouse IgG-CF488 (blue); isotype control (red).



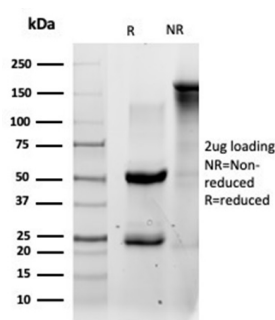
Immunofluorescence Analysis of PFA-fixed U87 cells. Staining localized to the nucleoplasm using QKI Mouse Monoclonal Antibody (PCRP-QKI-2F10) followed by goat anti-mouse IgG-CF488 (green). CF640R phalloidin (red).



Immunofluorescence Analysis of K562 cells stained using QKI Mouse Monoclonal Antibody (PCRP-QKI-2F10) followed by goat anti-mouse IgG-CF488 (green). CF640R phalloidin (red).



Immunofluorescence Analysis of PFA-fixed MCF7 cells stained using QKI Mouse Monoclonal Antibody (PCRP-QKI-2F10) followed by goat anti-mouse IgG-CF488 (green). CF640R phalloidin (red).



SDS-PAGE Analysis Purified QKI Mouse Monoclonal Antibody (PCRP-QKI-2F10) Confirmation of Purity and Integrity of Antibody.

Specificity & Comments

QKI, also known as HKQ, QK, QK3 or quaking, is a 341 amino acid protein that localizes to both the cytoplasm and the nucleus and contains one KH domain. Expressed in the frontal cortex of the brain, QKI functions as an RNA-binding protein that plays an important role in myelinization and specifically binds to the RNA core sequence 5'-NACUAAAY-N(1,20)-UAAAY-3'. Additionally, QKI regulates pre-mRNA splicing, and mRNA export and is involved in protecting and promoting the stability of select mRNAs. QKI may be methylated by PRMT1 and may also be phosphorylated at its C-terminus, an event that decreases QKI mRNA-binding affinity. Defects or deletions in the gene encoding QKI are associated with astrocytic tumors and may be involved in the pathogenesis of schizophrenia. Multiple isoforms of QKI exist due to alternative splicing events.

Supplied As

200ug/ml of Ab purified from Bioreactor Concentrate by Protein A/G. Prepared in 10mM PBS with 0.05% BSA & 0.05% azide. Also available WITHOUT BSA & azide at 1.0mg/ml.

Storage and Stability

Antibody with azide - store at 2 to 8 °C. Antibody without azide - store at -20 to -80 °C. Antibody is stable for 24 months. Non-hazardous. No MSDS required.

Research Areas

Cardiovascular, Infectious Disease, Nuclear Marker

Limitations and Warranty

This antibody is available for research use only and is not approved for use in diagnosis. There are no warranties, expressed or implied, which extend beyond this description. Company is not liable for any personal injury or economic loss resulting from this product.
