

CD30 / TNFRSF8 (Hodgkin & Reed-Sternberg Cell Marker) Antibody

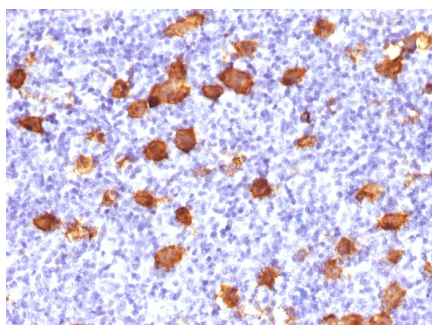
Catalog No	Format	Size
943-RBP6-P0	Purified Ab with BSA and Azide	200ug/ml
943-RBP6-P1	Purified Ab with BSA and Azide	200ug/ml
943-RBP6-P1ABX	Purified Ab WITHOUT BSA and Azide	1.0mg/ml

Applications	Tested Dillution
Immunohistochemistry (IHC)	1-2ug/ml

Product Details	
Gene Name	TNFRSF8
Immunogen	Recombinant human TNFRSF8 protein fragment
Host	Rabbit
Clonality	Polyclonal
Isotype / Light Chain	IgG / Kappa
Mol. Weight of Antigen	105-120kDa
Cellular Localization	Cell membrane, Cytoplasm
Species Reactivity	Human
Positive Control	Hodgkin's lymphoma.

**Optimal dilution for a specific application should be determined.*

Product Images for CD30 / TNFRSF8 (Hodgkin & Reed-Sternberg Cell Marker) Antibody



Formalin-fixed, paraffin-embedded human Hodgkin's Lymphoma stained with CD30 Rabbit Polyclonal Antibody.

Specificity & Comments

Recognizes a single chain glycoprotein of 105/120kDa, identified as CD30/Ki-1. CD30 is synthesized as a 90kDa precursor, which is processed in the Golgi complex into a membrane-bound phosphorylated mature 105/120kDa glycoprotein. In Hodgkin's disease, CD30/Ki-1 antigen is expressed by mononuclear-Hodgkin and multinucleated Reed-Sternberg cells. It is also expressed by the tumor cells of a majority of anaplastic large cell lymphomas as well as by a varying proportion of activated T and B cells. This antibody distinguishes large cell lymphomas derived from activated lymphoid cells from histiocytic malignancies and lymphomas derived from resting and precursor lymphoid cells or from anaplastic carcinomas. About one third of the Ki-1 positive lymphomas lack the leukocyte common antigen (CD45).

Research Areas

Cardiovascular, Immunology, AKT Signaling, Cytokine Signaling

Known Applications & Suggested Dilutions

Immunohistochemistry (Formalin-fixed) (1-2ug/ml for 30 minutes at RT)(Staining of formalin-fixed tissues requires heating tissue sections in 10mM Tris with 1mM EDTA, pH 8.0, for 45 min at 95°C followed by cooling at RT for 20 minutes)Optimal dilution for a specific application should be determined.

Limitations and Warranty

This antibody is available for research use only and is not approved for use in diagnosis.

There are no warranties, expressed or implied, which extend beyond this description. Company is not liable for any personal injury or economic loss resulting from this product.

Supplied As

200ug/ml of Ab Purified by Protein A Column. Prepared in 10mM PBS with 0.05% BSA & 0.05% azide. Also available WITHOUT BSA & azide at 1.0mg/ml.

Storage and Stability

Antibody with azide - store at 2 to 8°C. Antibody without azide - store at -20 to -80°C. Antibody is stable for 24 months. Non-hazardous. No MSDS required.