

## Recombinant CD30 / TNFRSF8 (Hodgkin & Reed-Sternberg Cell Marker) Antibody

Rabbit Monoclonal Antibody [Clone Ki-1/1747R]

Catalog No	Format	Size
943-RBM7-P0	Purified Ab with BSA and Azide at 200ug/ml	20 ug
943-RBM7-P1	Purified Ab with BSA and Azide at 200ug/ml	100 ug
943-RBM7-P1ABX	Purified Ab WITHOUT BSA and Azide at 1.0mg/ml	100 ug

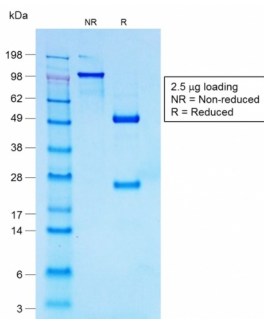
Applications	Tested Dillution	Note
Immunohistochemistry (IHC)	1-2ug/ml	30 min at RT. Staining of formalin-fixed tissues requires heating tissue sections in 10mM Tris with 1mM EDTA, pH 9.0, for 45 min at 95°C followed by cooling at RT for 20 minutes

### Product Details

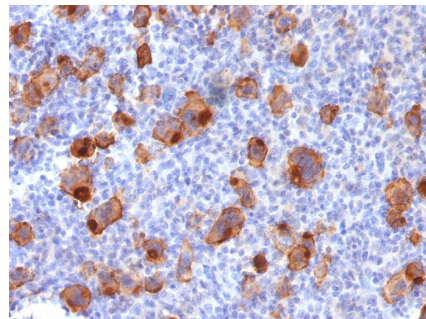
<b>Clone</b>	Ki-1/1747R
<b>Gene Name</b>	TNFRSF8
<b>Immunogen</b>	Recombinant human full-length TNFRSF8 protein
<b>Host</b>	Rabbit
<b>Clonality</b>	Monoclonal
<b>Isotype / Light Chain</b>	IgG / Kappa
<b>Mol. Weight of Antigen</b>	105-120kDa
<b>Cellular Localization</b>	Cell membrane, Cytoplasm
<b>Species Reactivity</b>	Human
<b>Positive Control</b>	Hodgkin's lymphoma.

\*Optimal dilution for a specific application should be determined.

### Product Images for Recombinant CD30 / TNFRSF8 (Hodgkin & Reed-Sternberg Cell Marker) Antibody



SDS-PAGE Analysis of Purified CD30 Rabbit Recombinant Monoclonal Antibody (Ki-1/1747R).



Formalin-fixed, paraffin-embedded human Hodgkin's Lymphoma stained with CD30 Rabbit Recombinant Monoclonal Antibody (Ki-1/1747R).

### Specificity & Comments

Recognizes a single chain glycoprotein of 105/120kDa, identified as CD30/Ki-1. CD30 is synthesized as a 90kDa precursor, which is processed in the Golgi complex into a membrane-bound phosphorylated mature 105/120kDa glycoprotein. In Hodgkin's disease, CD30/Ki-1 antigen is expressed by mononuclear-Hodgkin and multinucleated Reed-Sternberg cells. It is also expressed by the tumor cells of a majority of anaplastic large cell lymphomas as well as by a varying proportion of activated T and B cells. This MAb distinguishes large cell lymphomas derived from activated lymphoid cells from histiocytic malignancies and lymphomas derived from resting and precursor lymphoid cells or from anaplastic carcinomas. About one third of the Ki-1 positive lymphomas lack the leukocyte common antigen (CD45).

2 Union Square, Union City, CA 94587, Tel: 1-866-2-NEOBIO (1-866-263-6246) —  
orders@NeoBiotechnologies.com, www.NeoBiotechnologies.com

### Supplied As

200ug/ml of Ab Purified by Protein A Column. Prepared in 10mM PBS with 0.05% BSA & 0.05% azide. Also available WITHOUT BSA & azide at 1.0mg/ml.

### Storage and Stability

Antibody with azide - store at 2 to 8°C. Antibody without azide - store at -20 to -80°C. Antibody is stable for 24 months. Non-hazardous. No MSDS required.

### Research Areas

AKT Signaling, Cardiovascular, Cytokine Signaling, Immunology

## Limitations and Warranty

This antibody is available for research use only and is not approved for use in diagnosis. There are no warranties, expressed or implied, which extend beyond this description. Company is not liable for any personal injury or economic loss resulting from this product.

---