

Recombinant CD30 / TNFRSF8 (Hodgkin & Reed-Sternberg Cell Marker) Antibody

Rabbit Monoclonal Antibody [Clone Ki-1/4399R]

Catalog No	Format	Size
943-RBM10-P0	Purified Ab with BSA and Azide at 200ug/ml	20 ug
943-RBM10-P1	Purified Ab with BSA and Azide at 200ug/ml	100 ug
943-RBM10-P1ABX	Purified Ab WITHOUT BSA and Azide at 1.0mg/ml	100 ug

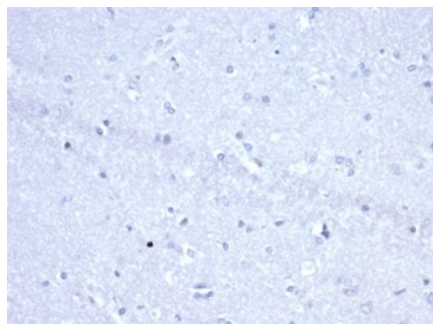
Applications	Tested Dillution	Note
Immunohistochemistry (IHC)	1-2ug/ml	30 min at RT. Staining of formalin-fixed tissues requires heating tissue sections in 10mM Tris with 1mM EDTA, pH 9.0, for 45 min at 95°C followed by cooling at RT for 20 minutes

Product Details

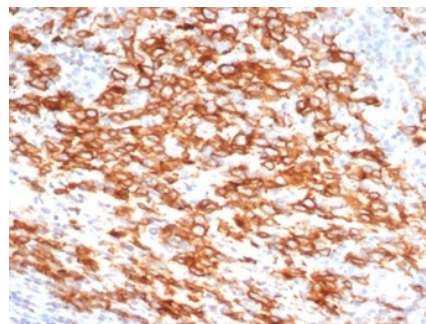
Clone	Ki-1/4399R
Gene Name	TNFRSF8
Immunogen	Recombinant fragment of human TNFRSF8 protein (CD30) (Epitope is cytoplasmic aa 495-595)
Host	Rabbit
Clonality	Monoclonal
Isotype / Light Chain	IgG / Kappa
Mol. Weight of Antigen	105-120kDa
Cellular Localization	Cell membrane, Cytoplasm
Species Reactivity	Human
Positive Control	Hodgkin s lymphoma.

*Optimal dilution for a specific application should be determined.

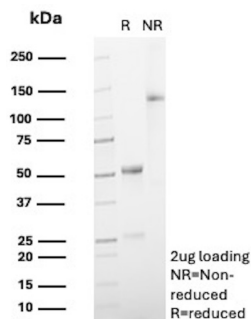
Product Images for Recombinant CD30 / TNFRSF8 (Hodgkin & Reed-Sternberg Cell Marker) Antibody



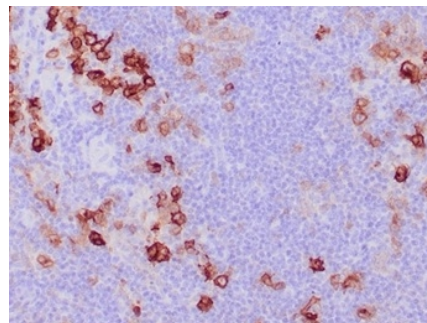
IHC analysis of formalin-fixed, paraffin-embedded human brain. Negative tissue control using Ki-1/4399R at 2ug/ml in PBS for 30min RT. HIER: Tris/EDTA, pH9.0, 45min. 2 °: HRP-polymer, 30min. DAB, 5min.



IHC analysis of formalin-fixed, paraffin-embedded human Hodgkin's lymphoma. Cytoplasmic and membranous staining using Ki-1/4399R at 2ug/ml in PBS for 30min RT. HIER: Tris/EDTA, pH9.0, 45min. 2 °: HRP-polymer, 30min. DAB, 5min.



SDS-PAGE Analysis of Purified CD30 Recombinant Rabbit Monoclonal Antibody(Ki1/4399R). Confirmation of Purity and Integrity of Antibody



IHC analysis of formalin-fixed, paraffin-embedded human Hodgkin's lymphoma. Cytoplasmic and membranous staining using Ki-1/4399R at 2ug/ml in PBS for 30min RT. HIER: Tris/EDTA, pH9.0, 45min. 2 °: HRP-polymer, 30min. DAB, 5min.

Specificity & Comments

Recognizes a single chain glycoprotein of 105/120kDa, identified as CD30/Ki-1. Its epitope is located somewhere between aa 580-595 (cytoplasmic). CD30 is synthesized as a 90kDa precursor, which is processed in the Golgi complex into a membrane-bound phosphorylated mature 105/120kDa glycoprotein. In Hodgkin's disease, CD30/Ki-1 antigen is expressed by mononuclear-Hodgkin and multinucleated Reed-Sternberg cells. It is also expressed by the tumor cells of a majority of anaplastic large cell lymphomas as well as by a varying proportion of activated T and B cells. This MAb distinguishes large cell lymphomas derived from activated lymphoid cells from histiocytic malignancies and lymphomas derived from resting and precursor lymphoid cells or from anaplastic carcinomas. About one third of the Ki-1 positive lymphomas lack the leukocyte common antigen (CD45).

Limitations and Warranty

This antibody is available for research use only and is not approved for use in diagnosis. There are no warranties, expressed or implied, which extend beyond this description. Company is not liable for any personal injury or economic loss resulting from this product.

Supplied As

200ug/ml of Ab purified by Protein A Column. Prepared in 10mM PBS with 0.05% BSA & 0.05% azide. Also available WITHOUT BSA & azide at 1.0mg/ml.

Storage and Stability

Antibody with azide - store at 2 to 8 °C. Antibody without azide - store at -20 to -80 °C. Antibody is stable for 24 months. Non-hazardous. No MSDS required.

Research Areas

AKT Signaling, Cardiovascular, Cytokine Signaling, Immunology