

CD30 / TNFRSF8 (Hodgkin & Reed-Sternberg Cell Marker) Antibody

Mouse Monoclonal Antibody [Clone Ber-H2]

Catalog No	Format	Size
943-MSM2-CS0	Culture Supernatant	0.1 ml
943-MSM2-CS1	Culture Supernatant	0.5 ml

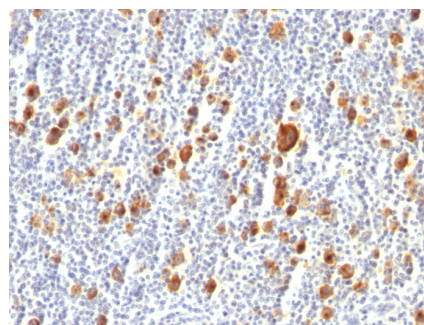
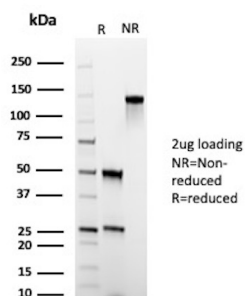
Applications	Tested Dillution	Note
Immunohistochemistry (IHC)	1-2ug/ml	30 min at RT. Staining of formalin-fixed tissues requires heating tissue sections in 10mM Tris with 1mM EDTA, pH 9.0, for 45 min at 95°C followed by cooling at RT for 20 minutes

Product Details

Clone	Ber-H2
Gene Name	TNFRSF8
Immunogen	Co cell line established from a patient with Hodgkin's disease of T-cell lineage
Host	Mouse
Clonality	Monoclonal
Isotype / Light Chain	IgG1 / Kappa
Mol. Weight of Antigen	105-120kDa
Cellular Localization	Cell membrane, Cytoplasm
Species Reactivity	Human
Positive Control	Hodgkin's lymphoma.

**Optimal dilution for a specific application should be determined.*

Product Images for CD30 / TNFRSF8 (Hodgkin & Reed-Sternberg Cell Marker) Antibody



SDS-PAGE Analysis of Purified Tumor necrosis factor receptor superfamily member 8 Mouse Monoclonal Antibody (Ber-H2). Confirmation of Purity and Integrity of Antibody.

Formalin-fixed, paraffin-embedded human Hodgkin's Lymphoma stained with CD30 Monoclonal Antibody (Ber-H2).

Specificity & Comments

Recognizes a single chain glycoprotein of 105/120kDa, identified as CD30/Ki-1. Its epitope is located between aa112-412. CD30 is synthesized as a 90kDa precursor, which is processed in the Golgi complex into a membrane-bound phosphorylated mature 105/120kDa glycoprotein. In Hodgkin's disease, CD30/Ki-1 antigen is expressed by mononuclear-Hodgkin and multinucleated Reed-Sternberg cells. It is also expressed by the tumor cells of a majority of anaplastic large cell lymphomas as well as by a varying proportion of activated T and B cells. This MAb distinguishes large cell lymphomas derived from activated lymphoid cells from histiocytic malignancies and lymphomas derived from resting and precursor lymphoid cells or from anaplastic carcinomas. About one third of the Ki-1 positive lymphomas lack the leukocyte common antigen (CD45).

Limitations and Warranty

This antibody is available for research use only and is not approved for use in diagnosis. There are no warranties, expressed or implied, which extend beyond this description. Company is not liable for any personal injury or economic loss resulting from this product.

Supplied As

Tissue culture supernatant with 0.05% Azide. Contact us if you require it in a different format.

Storage and Stability

Store at 2 to 8°C. Antibody is stable for 24 months. Non-hazardous. No MSDS required.

Research Areas

Cardiovascular, Immunology, AKT Signaling, Cytokine Signaling