

## Recombinant CD30/ TNFRSF8 (Hodgkin & Reed-Sternberg Cell Marker) Antibody

Mouse Monoclonal Antibody [Clone rKi-1/6913]

Catalog No	Format	Size
943-MSM13-P0	Purified Ab with BSA and Azide at 200ug/ml	20 ug
943-MSM13-P1	Purified Ab with BSA and Azide at 200ug/ml	100 ug
943-MSM13-P1ABX	Purified Ab WITHOUT BSA and Azide at 1.0mg/ml	100 ug

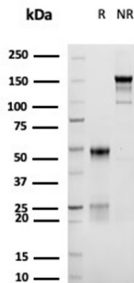
Applications	Tested Dillution	Note
Immunohistochemistry (IHC)	1-2ug/ml	30 min at RT. Staining of formalin-fixed tissues requires heating tissue sections in 10mM Tris with 1mM EDTA, pH 9.0, for 45 min at 95°C followed by cooling at RT for 20 minutes

### Product Details

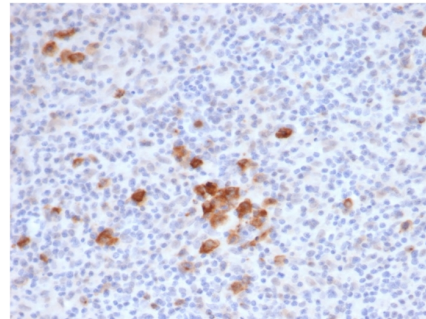
<b>Clone</b>	rKi-1/6913
<b>Gene Name</b>	TNFRSF8
<b>Immunogen</b>	Recombinant fragment of human TNFRSF8 protein(CD30) (Epitope is cytoplasmic aa 495-595)
<b>Host</b>	Mouse
<b>Clonality</b>	Monoclonal
<b>Isotype / Light Chain</b>	IgG1 / Kappa
<b>Mol. Weight of Antigen</b>	105-120kDa
<b>Cellular Localization</b>	Cell membrane, Cytoplasm
<b>Species Reactivity</b>	Human
<b>Positive Control</b>	Hodgkin s lymphoma.

\*Optimal dilution for a specific application should be determined.

### Product Images for Recombinant CD30/ TNFRSF8 (Hodgkin & Reed-Sternberg Cell Marker) Antibody



SDS-PAGE Analysis Purified CD30 Mouse Monoclonal Antibody (rKi-1/6913). Confirmation of Integrity and Purity of Antibody.



IHC analysis of formalin-fixed, paraffin-embedded human Hodgkin's lymphoma. Saining of Reed-Sternberg cells using rKi-1/6913 at 2ug/ml in PBS for 30min RT. HIER: Tris/EDTA, pH9.0, 45min. 2°C: HRP-polymer, 30min. DAB, 5min.

### **Specificity & Comments**

Recognizes a single chain glycoprotein of 105/120kDa, identified as CD30/Ki-1. Its epitope is located somewhere between aa 580-595 (cytoplasmic). CD30 is synthesized as a 90kDa precursor, which is processed in the Golgi complex into a membrane-bound phosphorylated mature 105/120kDa glycoprotein. In Hodgkin's disease, CD30/Ki-1 antigen is expressed by mononuclear-Hodgkin and multinucleated Reed-Sternberg cells. It is also expressed by the tumor cells of a majority of anaplastic large cell lymphomas as well as by a varying proportion of activated T and B cells. This MAb distinguishes large cell lymphomas derived from activated lymphoid cells from histiocytic malignancies and lymphomas derived from resting and precursor lymphoid cells or from anaplastic carcinomas. About one third of the Ki-1 positive lymphomas lack the leukocyte common antigen (CD45).

---

### **Limitations and Warranty**

This antibody is available for research use only and is not approved for use in diagnosis. There are no warranties, expressed or implied, which extend beyond this description. Company is not liable for any personal injury or economic loss resulting from this product.

---

### **Supplied As**

200ug/ml of Ab purified by Protein A Column. Prepared in 10mM PBS with 0.05% BSA & 0.05% azide. Also available WITHOUT BSA & azide at 1.0mg/ml.

---

### **Storage and Stability**

Antibody with azide - store at 2 to 8 °C. Antibody without azide - store at -20 to -80 °C. Antibody is stable for 24 months. Non-hazardous. No MSDS required.

---

### **Research Areas**

AKT Signaling, Cardiovascular, Cytokine Signaling, Immunology

---